

ITEM No ...3.....

REPORT TO: CHILDREN, FAMILIES AND COMMUNITIES COMMITTEE 2 DECEMBER 2024

REPORT ON: PROGRESS UPDATE: SENIOR PHASE ATTAINMENT 2023/24

REPORT BY: EXECUTIVE DIRECTOR OF CHILDREN AND FAMILIES SERVICE

REPORT NO: 337-2024

1 PURPOSE OF REPORT

- 1.1 This report informs the Children, Families and Communities Committee of senior phase attainment by Dundee pupils to the end of academic session 2023-24. The data is taken from Insight, the Scottish Government's benchmarking tool. They are based on the latest Insight data release, published in September 2024.

2 RECOMMENDATIONS

- 2.1 It is recommended that the Children, Families & Communities Committee:
- a Notes the contents of the report and,
 - b Instructs the Chief Education Officer to update the Committee about senior phase attainment in academic session 2024/25 after the Insight update in September 2025.

3 FINANCIAL IMPLICATIONS

- 3.1 None.

4 BACKGROUND

- 4.1 This report is focused on providing Committee with an update about the attainment of pupils in the senior phase during academic session 2023/24.
- 4.2 Data used in this report is taken from Insight. Insight is the professional benchmarking tool for analysing attainment data in the senior phase, accessible by secondary schools and local authorities. It is designed to support self-evaluation and provide schools with their attainment information in a format that makes it straightforward to identify possible areas for improvement for pupils in S4 to S6. Much of the attainment information is based on pupils' best awards in each subject. Insight does not include data relating to attainment in S1 - S3. Although Insight provides data on the attainment of a wide range of Scottish Credit and Qualifications Framework (SCQF) awards from a range of providers, not all SCQF achievement awards are included.
- 4.3 This committee report is based on the September Insight refresh, which adds results from the 2024 exam diet and allows stage-based measures to be calculated.
- 4.4 The latest Insight update includes the following COVID-19 Statement:
- 4.5 There were different approaches to awarding in sessions included in this update. Comparisons of attainment between years should be treated with significant caution and do not allow for conclusions to be drawn on changes in education performance during this time. Comparisons of entries, attainment volumes and attainment rates should only be made with full consideration and recognition of each of these different approaches. Attainment data (as updated in September 2024), depending on the cohort selected, may include attainment gained across a number of academic sessions (typically these would be S5 and S6 cohorts) and therefore reflect differing approaches to certification dependant on the session in which the achievement was certificated.

-
- 4.6 Stage-based measures are provided in this report for 'S6 based on S4.' It is important to know that measures such as "Attainment for All" and "Breadth and Depth" are cumulative, in the sense that they show attainment gathered through the Senior Phase. An S6 pupil will have all their "best (in each subject)" S4, 5 and 6 attainments included. It is also important to note that "S6 based on S4" can be heavily impacted by leavers' rate. If a school, or local authority, has a high S4 leavers' rate this means less pupils stay on to sit Highers and Advanced Highers.
- 4.7 This year's S6 based on S4 is based on 1,465 pupils who would have started their senior phase in S4 in August 2021. Of these, 614 live in Scottish Index of Multiple Deprivation (SIMD) Quintile 1 (Scotland's 20% most deprived data zones) and 264 live in SIMD Quintile 5 (Scotland's 20% least deprived data zones). Over half, 759, of this cohort had at least one Additional Support Need (ASN) recorded. 18 pupils were experiencing local authority care.
- 4.8 Insight provides a Virtual Comparator for each school and local authority to allow them to benchmark their progress against similar pupils. For each pupil in a school or local authority ten similar pupils (similar in terms of age, gender, deprivation and additional support needs) are selected at random from other local authorities. These characteristics were selected due to their significance in explaining differences in the attainment and destinations of school leavers in Scotland. This selection of pupils makes up the Virtual Comparator.

5 SENIOR PHASE ATTAINMENT 2023/24

- 5.1 When looking at the measures discussed below, the COVID-19 impact statement in paragraph 4.4 above should be borne in mind. Many of these measures show a peak in 2022 with a decline thereafter. This would have been the cohort that started S4 in 2019 and finished S6 in 2022; they had no exams in 2020 and used the Alternative Certification Model in S5 in 2021. Other cohorts before and after having also had different combinations of exams and assessments.

Literacy and Numeracy

S6, Based on S4 (1,465 pupils)

- 5.2 In 2024, 89% of pupils achieved Literacy at SCQF Level 4 or better, the same as 2023. 72% achieved Literacy at SCQF Level 5 or better, down 1 percentage point from 2023. The gap in Literacy attainment between pupils from the Scottish Index of Multiple Deprivation (SIMD) Quintiles 1 (most deprived) and 5 (least deprived) has reduced from 14 percentage points (pp) in 2020 at SCQF Level 4 to 11 pp in 2024, and from 31 pp at SCQF Level 5 to 26 pp over the same period.
- 5.3 In 2024, 85% of pupils achieved Numeracy at SCQF Level 4 or better, a reduction of 2pp since 2023. 63% achieved Numeracy at SCQF Level 5 or better, down 1 pp from 2023. The gap in Numeracy attainment between SIMD Quintiles 1 and 5 at SCQF Level 4 increased from 12pp in 2023 to 15pp in 2024 but remains narrower than the 17pp seen in 2020. The gap in Numeracy attainment between SIMD Quintiles 1 and 5 at SCQF Level 5 remained at 28pp, narrower than the 35pp gap seen in 2020.

S6, Based on S6 (713 pupils)

- 5.4 In 2024, 97% of S6 pupils achieved Literacy at SCQF Level 4 or better, compared to 98% for Dundee's Virtual Comparator (VC). 95% of S6 pupils achieved Literacy at SCQF Level 5 or better, the same as the VC.
- 5.5 In 2024, 96% of S6 pupils achieved Numeracy at SCQF Level 4 or better, the same as the VC. 87% of S6 pupils achieved Numeracy at SCQF Level 5 or better, the same as the VC.

Improving Attainment for All

S6, Based on S4 (1,465 pupils)

- 5.6 Insight produces average tariff scores for: the lowest attaining 20%, middle 60% and highest attaining 20% of pupils. The average tariff score for Dundee's lowest attaining 20% of pupils increased from 67 points in 2023 to 73 in 2024. Tariff scores for the middle and highest attaining groups have fallen and now lie at 503 and 1184 respectively.
- 5.7 The gaps in tariff points between pupils from the most and least deprived areas (SIMD Quintiles 1 and 5) have decreased in all three attainment groups. The gap amongst the lowest attaining 20% is now 135 points, amongst the middle attaining 60%, 387 points, and 344 within the highest attaining group.

S6, Based on S6 (713 pupils)

- 5.8 As Figure 1 shows, the performance of the lowest attaining 20% (365 points) of our S6 pupils in 2023/24 is greater than the VC (311 points); this is recorded as statistically significant in Insight. The performance of the lowest attaining 20% is also greater than the Scotland average (351 points). The middle 60% (859 points) attained in line with the VC (853 points) and the highest 20% (1,342 points) attained in line with the VC (1,353 points).

The selected year is 2024

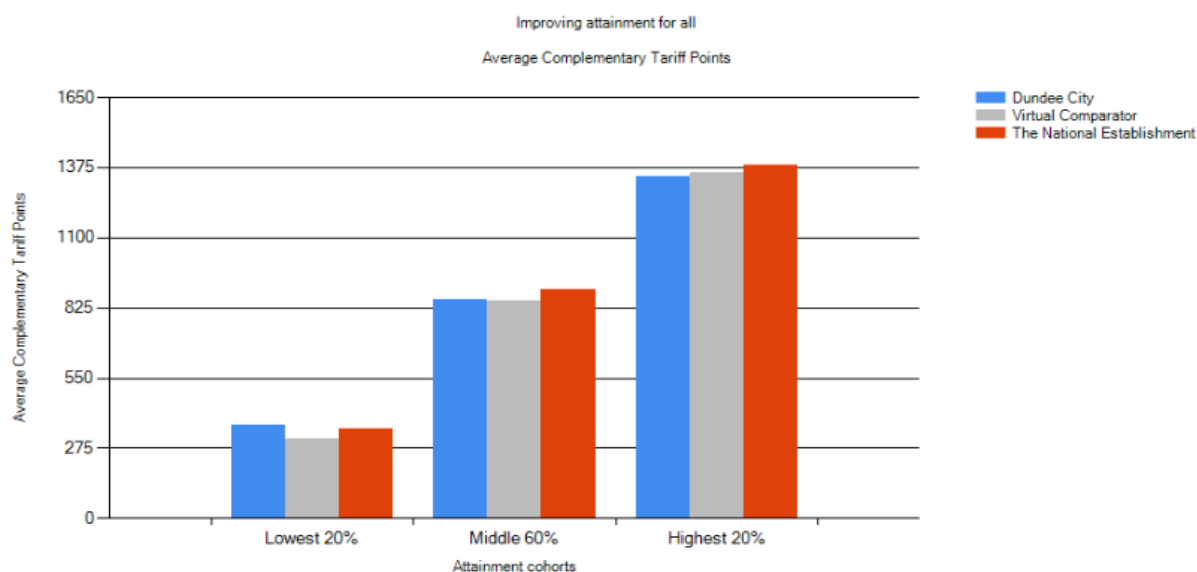


Figure 1 Improving Attainment for All, Performance of S6 pupils in 2024

Breadth and Depth

- 5.9 Breadth and Depth counts the number of awards a pupil has achieved at or above a certain SCQF level. The Children and Families Service has a range of measures relating to Breadth and Depth within our Strategic Equity Fund Stretch Aims. The Service has stretch aims for the percentage of pupils achieving 1 or more awards at SCQF Level 4 or better, broken down by pupils with Additional Support Needs and those without. There are also stretch aims for the percentage of pupils achieving 1 or more awards at SCQF Level 5 or better and 6 or better. For these measures the Service is also specifically looking at pupils living in SIMD Quintiles 1 and 5 and the gap between them.

S6, Based on S4 (1,465 pupils)

- 5.10 The percentage of pupils achieving 1 or more awards at SCQF Level 4 or better increased from 91% in 2023 to 92% in 2024. The percentage of pupils achieving 1 or more awards at SCQF Level 5 or better has remained steady at 82%. The overall percentage of pupils achieving 1 or more awards at SCQF Level 6 or better has dropped by 1pp to 47%. However, the percentage of pupils from the most deprived areas achieving 1 or more awards at SCQF Level 6 or better has increased to 47%, its highest value in the last five years.

S6, Based on S6 (713 pupils)

- 5.11 90% of S6 pupils achieved 5 or more awards at SCQF Level 5 or better; this is 3pp higher than the VC. 240 S6 pupils live in SIMD Quintile 1; 87% of these pupils achieved 5 or more awards at SCQF Level 5 or better; this is 9pp greater than the VC (78%). 29% of pupils in S6 living in SIMD Quintile 1 achieved at least 1 award at SCQF Level 7 compared to 28% for the VC.

Attainment versus Deprivation

S6, Based on S4 (1,465 pupils)

- 5.12 Insight shows the average tariff points achieved by the total number of pupils in each SIMD decile compared to the VC and tests for any 'significant comparisons.' The performance of Dundee's pupils compared to the VC can be seen in Figure 2. Testing found that there were no significant comparisons for this measure.

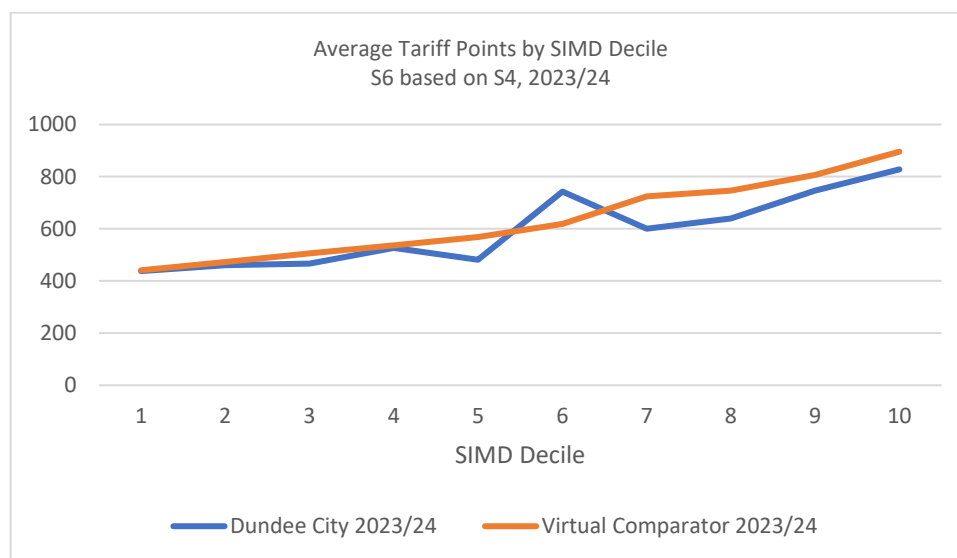


Figure 2 Average Tariff Points at each SIMD Decile, S6 based on S4. 2023/24.

S6, Based on S6 (713 pupils)

- 5.13 The performance of all Dundee's S6 pupils (by SIMD decile) compared to the VC can be seen in Figure 3 below. Insight testing found that the following comparisons were significant:
- In SIMD decile 6, performance is much greater than the Virtual Comparator
 - In SIMD decile 1, performance is greater than the Virtual Comparator
 - In SIMD decile 2, performance is greater than the Virtual Comparator

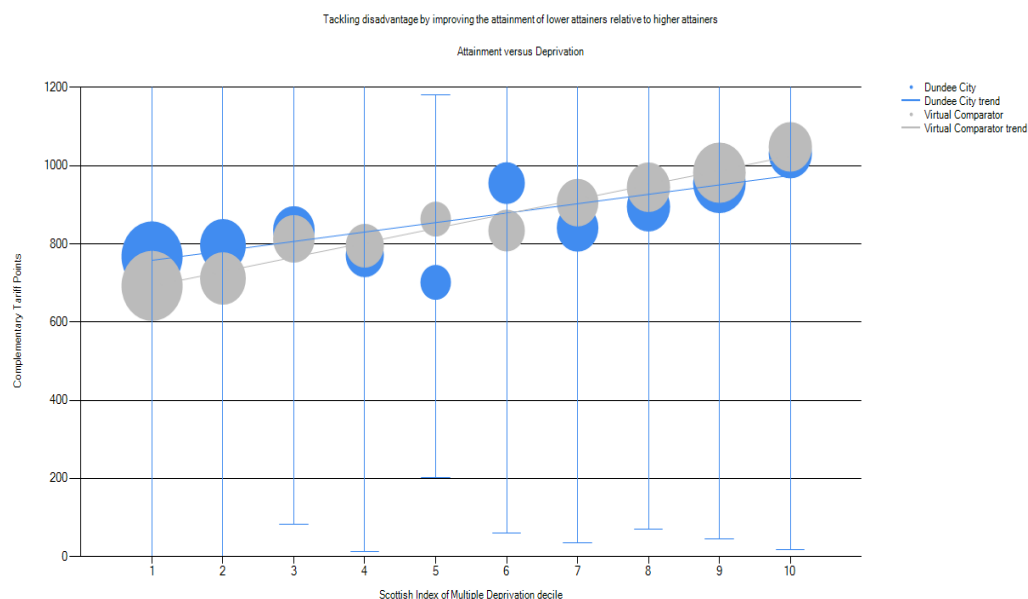


Figure 3 Average Tariff Points at each SIMD Decile, S6 based on S6. 2023/24.

5.14 Appendix 1 includes some further detail and analysis of Senior Phase attainment in 2023/24.

6 NEXT STEPS

- 6.1 The performance of pupils in the Senior Phase is the culmination of a pupil's learning journey through early learning and childcare, primary and secondary education. Therefore, there are a range of improvement actions which will contribute to further raising attainment and achievement. Here are some high-level key actions to further improve senior phase attainment.
- 6.1.1 Each school is required to have a school inquiry focused on improving the presence (attendance, punctuality and engagement) of all pupils. Key improvement activities will be outlined in school improvement plans. Five schools (primary and secondary) will engage in the national quality improvement Improving School Attendance programme, with key learning shared across all schools.
- 6.1.2 School Improvement Partnerships (SIPs) will be further strengthened to ensure that leaders at all levels can support and challenge effectively.
- 6.1.3 We will continue to work in partnership with Education Scotland to strengthen secondary practitioners' knowledge and understanding of the learning, teaching and assessment cycle in the Broad General Education. Working with the Tayside Regional Improvement Collaborative develop a specific improvement plan to further improve the learning transition from P7 to S1.
- 6.1.4 There will be a redesign of the central quality improvement team and engagement in appropriate professional learning to ensure that the team has the requisite knowledge and skills to affect school and service improvement.
- 6.1.5 The planned programme of quality improvement activity at universal, targeted, and intensive ('team around the school') levels using a data informed approach is being implemented, with some schools receiving a range of targeted and intensive support as a result.

7 POLICY IMPLICATIONS

- 7.1 This report has been subject to the Pre-IIA Screening Tool and does not make any recommendations for change to strategy, policy, procedures, services, or funding and so has not been subject to an Integrated Impact Assessment. An appropriate senior manager has reviewed and agreed with this assessment.

8 CONSULTATIONS

- 8.1 The Council Leadership Team has been consulted in the preparation of this report and are in agreement with its content.

9 BACKGROUND PAPERS

- 9.1 None.

Audrey May
Executive Director of Children and Families

Paul Fleming
Chief Education Officer
Head of Service – Education, Learning & Inclusion

November 2024

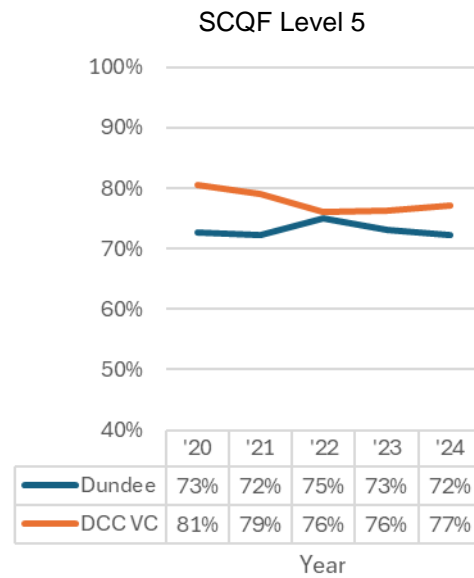
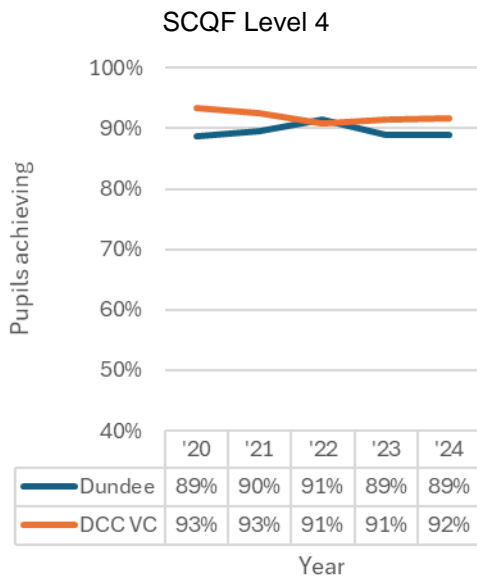
APPENDIX 1

Charts, tables and narrative outlining Insight attainment measures, S6 based on S4, following the September 2024 Insight refresh, along with pass rates for SQA graded subjects at National 5, Higher and Advanced Higher.

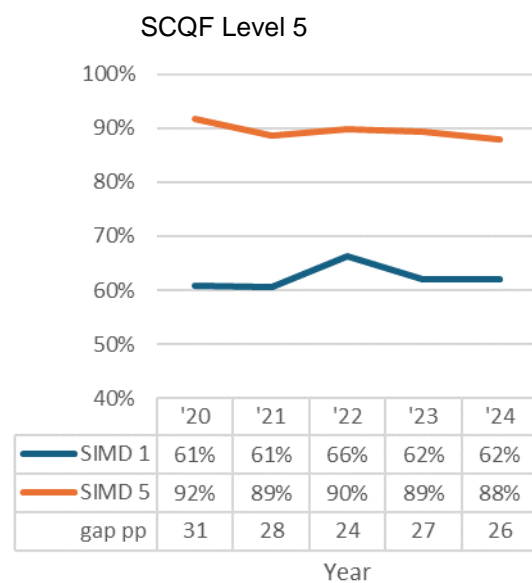
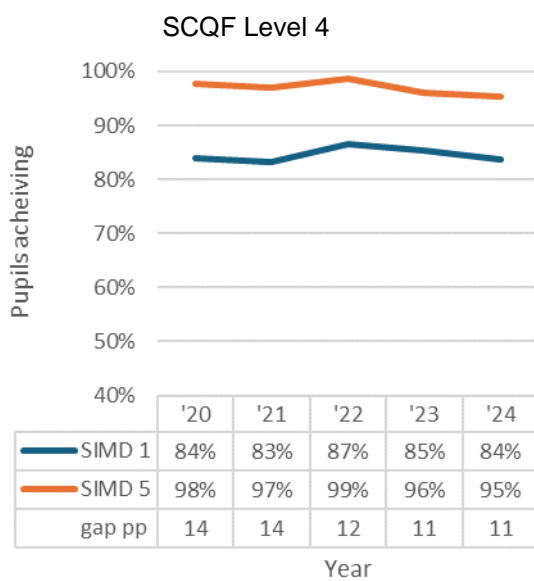
LITERACY AND NUMERACY

Literacy

Percentage of Dundee pupils achieving literacy at, or above...



Percentage of Dundee pupils in SIMD Quintiles 1 and 5 achieving literacy at, or above...



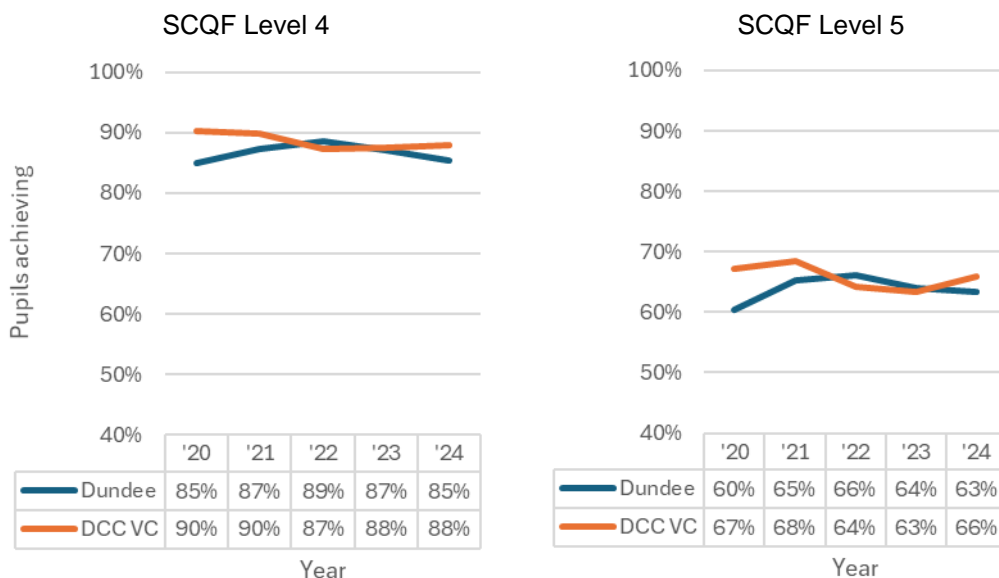
Literacy

Dundee saw a peak in levels of attainment in literacy in 2022. This would have been the cohort that started S4 in 2019 and finished S6 in 2022; they had no exams in 2020 and used the Alternative Certification Model in S5 in 2021. Since then Dundee has seen a decrease in the percentage of pupils achieving literacy at SCQF Levels 4 and 5 or better. Dundee currently lies three percentage points below its Insight Virtual Comparator (VC) at SCQF Level 4, and five points below at Level 5

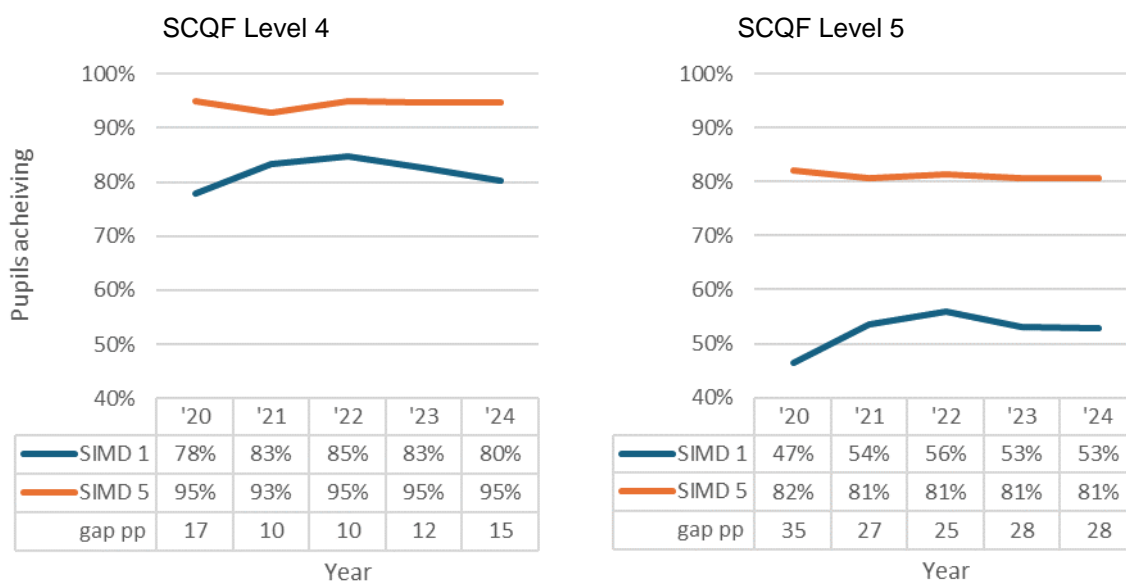
The gap in literacy attainment between Dundee pupils in SIMD Quintiles 1 and 5 has narrowed at both SCQF Levels 4 and 5 or better. Most of this narrowing though has been due to decreases in literacy attainment by pupils from SIMD Quintile 5.

Numeracy

Percentage of Dundee pupils achieving numeracy at, or above...



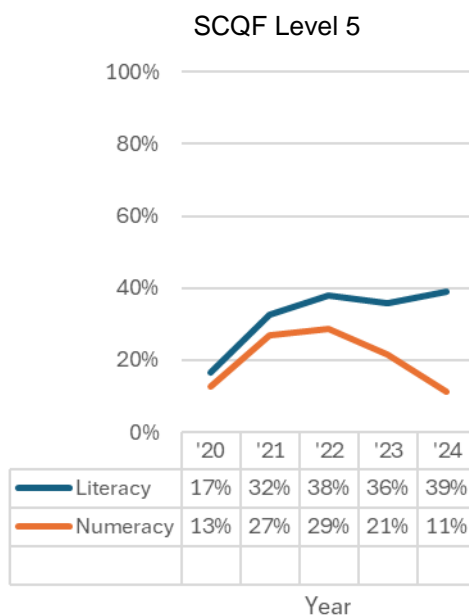
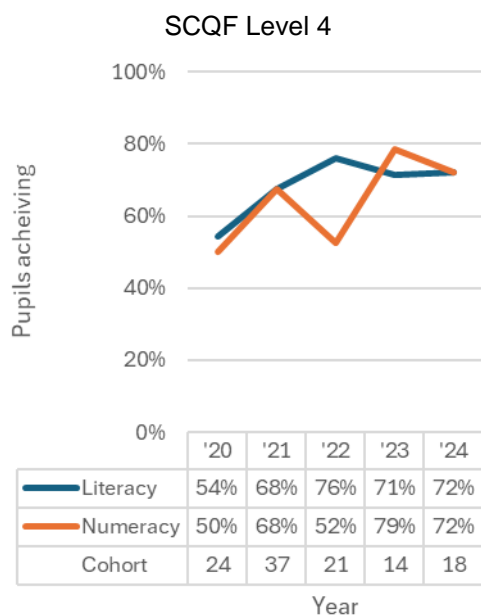
Percentage of Dundee pupils in SIMD Quintiles 1 and 5 achieving numeracy at, or above...



As with literacy, Dundee saw a peak in levels of attainment in numeracy in 2022. Dundee saw a decline in numeracy attainment in 2023 and 2024. Dundee currently lies three percentage points below its Virtual Comparator at both SCQF Levels 4 and 5.

The gap in Dundee in numeracy attainment between SIMD Quintiles 1 and 5 has grown since 2022.

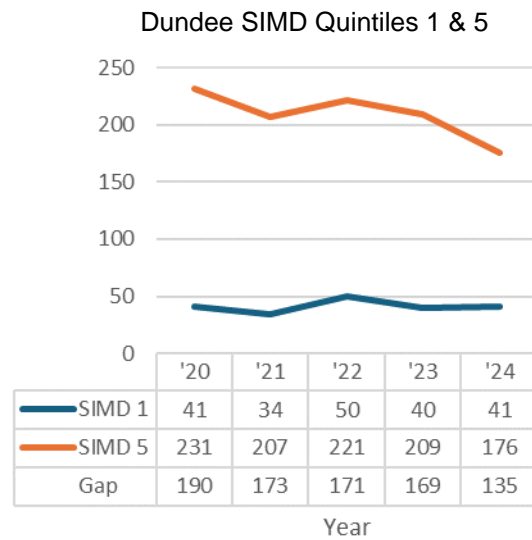
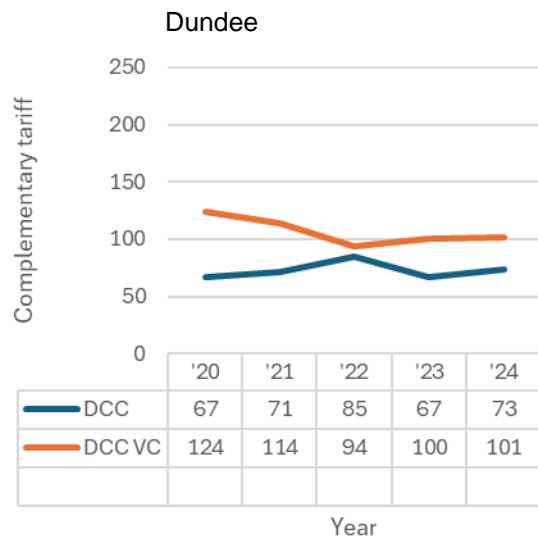
Literacy and Numeracy for Care Experiencing Pupils



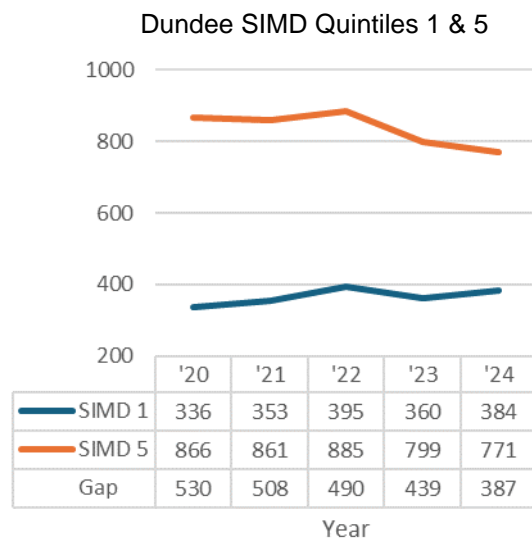
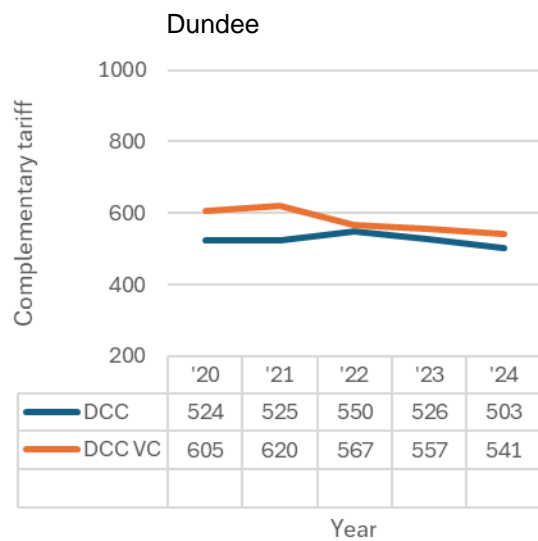
Dundee has a small number of care experiencing young people in the senior phase, with 18 in the latest cohort. This small cohort size can lead to fluctuations in outcome measures that are not statistically significant. Variations reflect the individual pupils involved rather than overall population trends.

IMPROVING ATTAINMENT FOR ALL

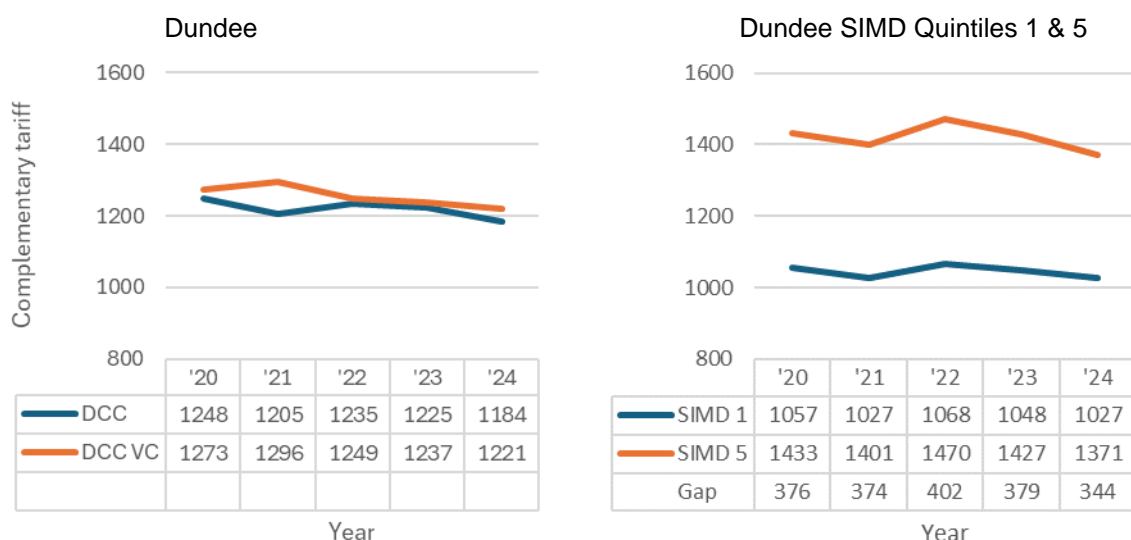
Lowest performing 20%



Middle performing 60%



Highest performing 20%



Insight uses tariff points to provide a summary view of a wide range of achievement and different awards from a variety of providers. Tariff scores are based on the latest and best results a young person achieves at school. For example, if a pupil has National 5 French and Higher French only the tariff points from the Higher award would be counted. The table below shows some example tariff scores. It can be seen that at each SCQF level increment, the tariff score more than doubles. Significantly, a pupil attempting Advanced Highers in S6 has the potential to gain considerably more points than a pupil leaving with only Highers or National 5's. An S4 pupil with six awards at National 4 would score just under 200 points. A high-achieving, S6 pupil with six National 5's, five Highers and three Advanced Highers could have around 2,000 points. Insight divides each cohort into three sections when reporting tariff scores: the top attaining 20% of pupils, the middle 60% and the lowest attaining 20%

	Pass	
National 4	33	
	Grade C	Grade A
National 5	64	84
Higher	160	204
Advanced Higher	400	480

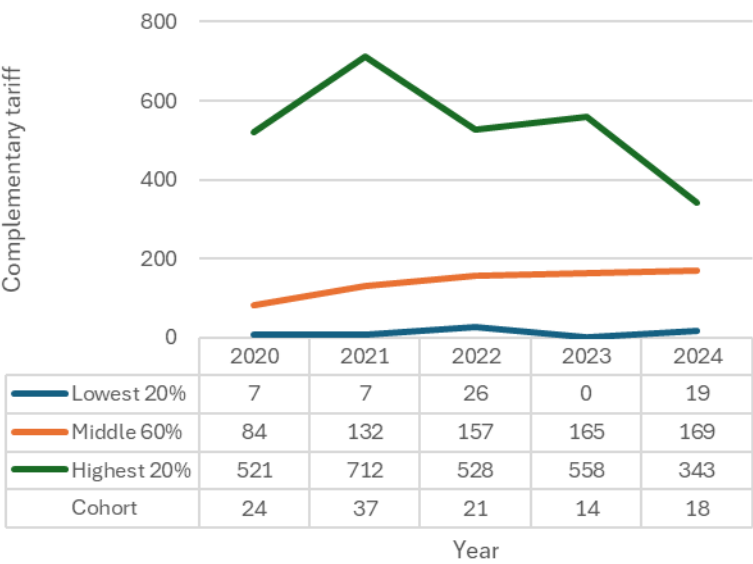
Across Scotland local authorities and schools have different curriculum models in the senior phase. This makes it hard to benchmark tariffs between authorities. To address this the Insight tool calculates a complementary tariff scale. The complementary tariff only includes a pupil's results from their best 120 SCQF credits: generally speaking a pupil's best five results.

Complementary tariff scores peaked in Dundee in 2022. Tariff scores have decreased in Dundee 2022, although Dundee's lowest attaining 20% increased their tariff score in 2024 compared to 2023.

Dundee's complementary tariff scores are lower than those of its Virtual Comparator.

The gap between tariff scores for Dundee pupils living in SIMD Quintiles 1 and 5 has narrowed. This has been predominantly driven by declines in tariff scores for pupils living in SIMD Quintile 5.

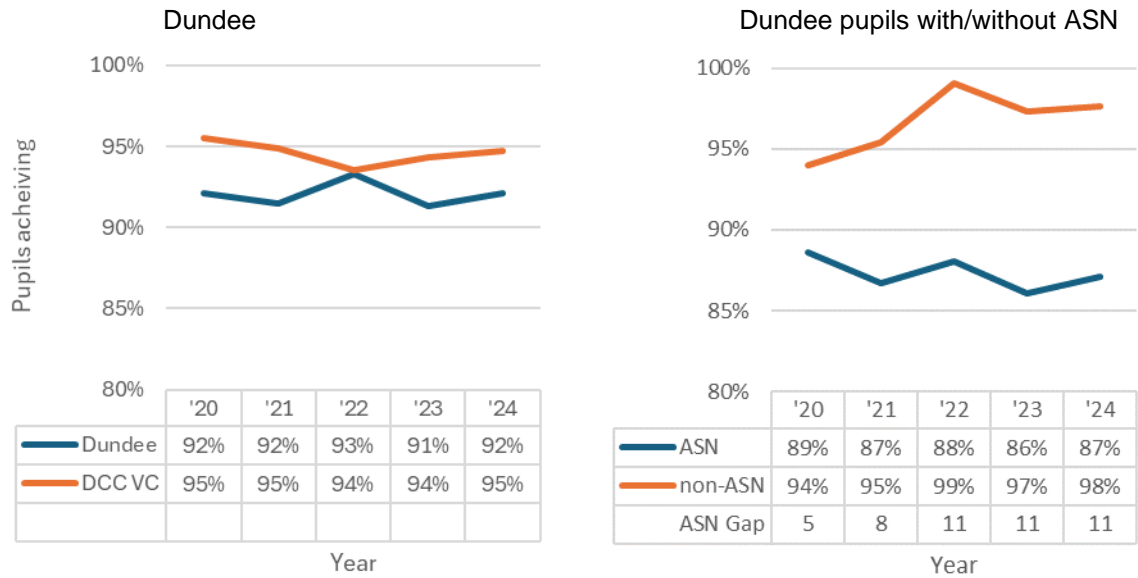
Complementary tariff points for Care Experiencing Pupils



Dundee has a small number of care experiencing young people in the senior phase, with 18 in the latest cohort. This small cohort size can lead to fluctuations in outcome measures that are not statistically significant. Variations reflect the individual pupils involved rather than overall population trends.

BREADTH AND DEPTH

1 or more awards at SCQF Level 4 or better

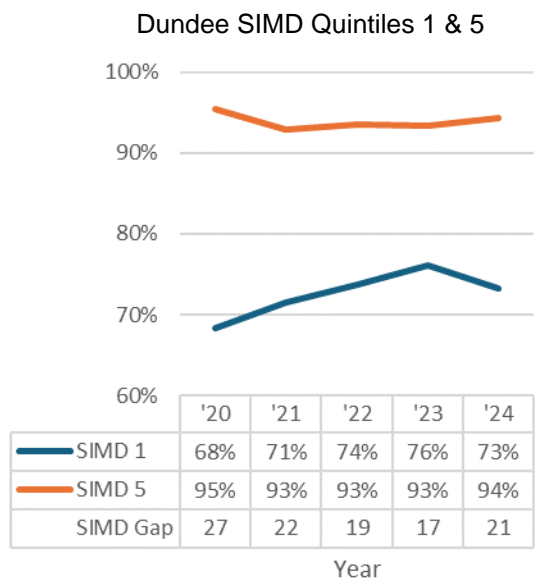
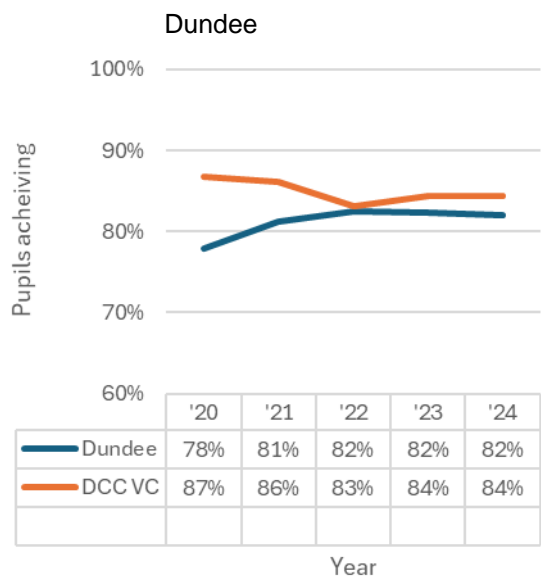


Dundee has set a local Strategic Equity Fund (SEF) Stretch Aim of increasing the percentage of pupils attaining one or more awards at SCQF Level 4 or better as well as closing the gap between pupils with identified Additional Support Needs (ASN) and those without. 759 (52%) of pupils in the 2024 cohort had at least one ASN recorded.

The percentage of Dundee's senior phase gaining at least one award at SCQF Level 4 or better has fluctuated slightly but remains at 92%, lower than its Virtual Comparator at 95%. Dundee's stretch aim for 2026 is to increase this to 97%.

The gap between pupils with and without Additional Support Needs in Dundee has remained static for the last three years at 11 percentage points. Dundee's stretch aim for 2026 is to narrow this gap to 5 percentage points.

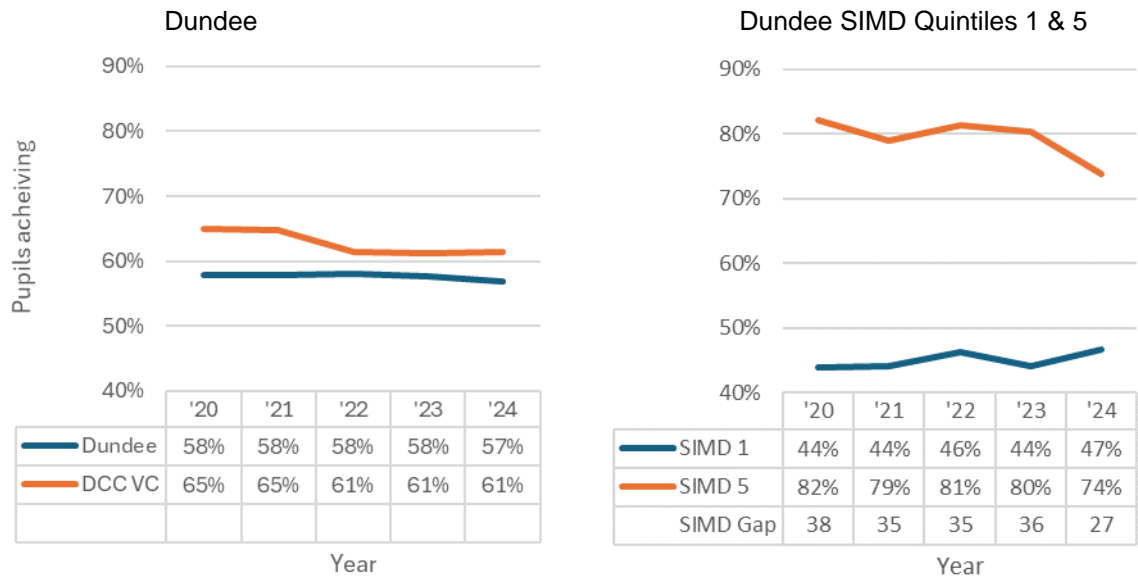
1 or more awards at SCQF Level 5 or better



Dundee’s core SEF Stretch Aim for attainment at SCQF Level 5 or better is 87% of pupils achieving 1 or more awards at this level. Dundee has improved from 78% in 2020 but remained static at 82% for the last three years. Dundee’s virtual comparator has remained static at 84% for two years, two percentage points above Dundee.

The gap between SIMD Quintiles 1 and 5 in Dundee had narrowed from 27 percentage points in 2020 to 17 in 2023. In 2024 this gap has widened again to 21 percentage points. Our target for 2026 is a 14 percentage point gap.

1 or more awards at SCQF Level 6 or better

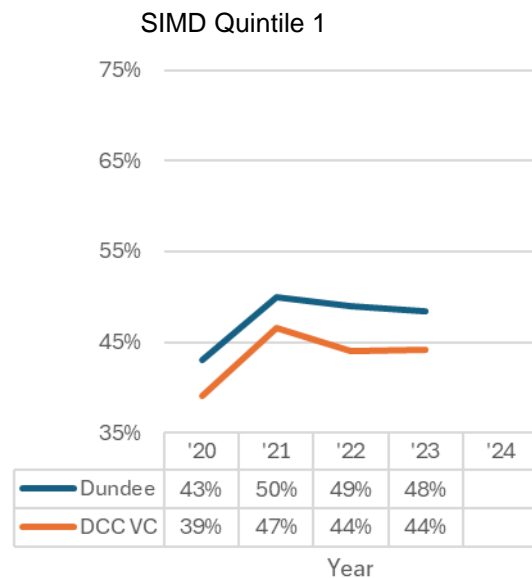
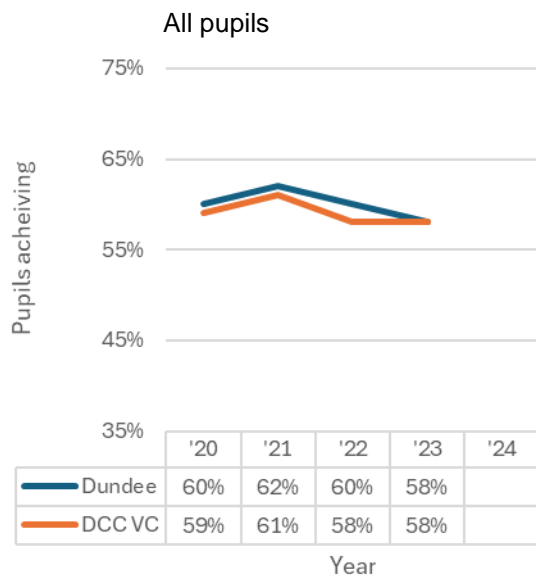


Dundee’s core SEF Stretch Aim for attainment at SCQF Level 6 or better is 65% of pupils achieving 1 or more awards at this level. From 2020 to 2023 Dundee remained static at 58% but decreased in 2024 to 57%. Dundee’s Virtual Comparator has remained static at 61% for three years, three to, now, four percentage points above Dundee.

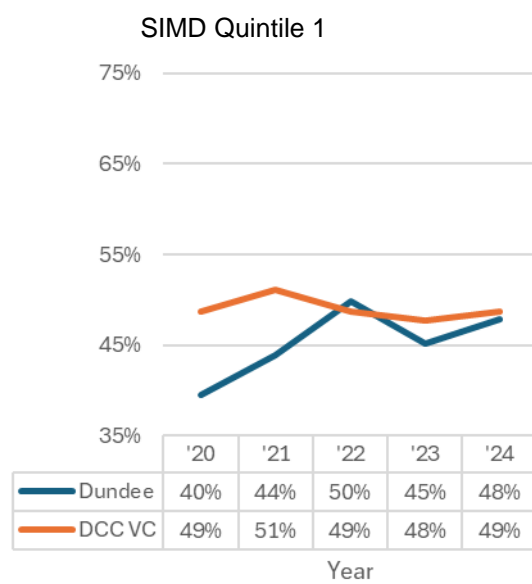
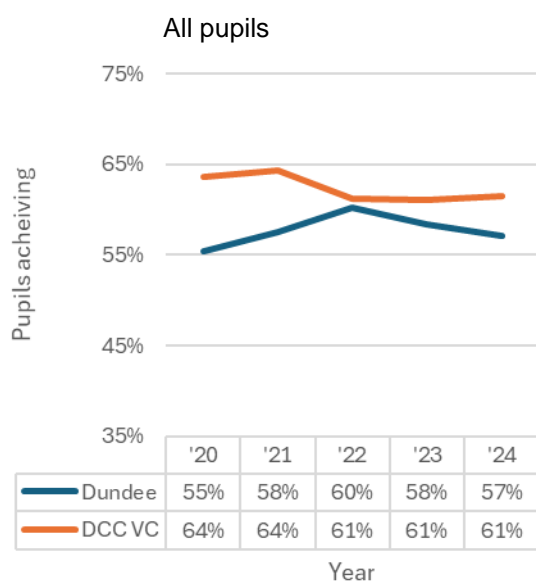
The gap in Dundee between SIMD Quintiles 1 & 5 has reduced from 38 percentage points to 27. This is now better than our 2026 stretch Aim of a 28-point gap. This reduction though has predominantly been driven by a decline in attainment in SIMD Quintile 5.

5 or more awards at SCQF Level 5 or better

LGBF published data – Leavers



Equivalent S6 based on S4 stage data, available for 2023/24



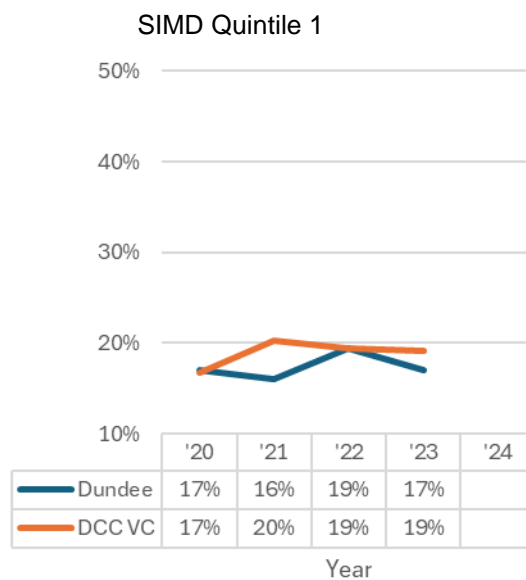
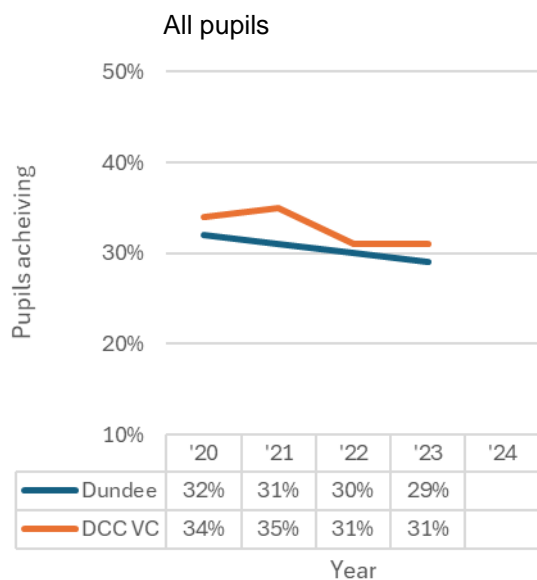
5 or more awards at SCQF Level 5 or better

The Local Government Benchmarking Framework (LGBF) publishes a suite of measures at local authority level to allow benchmarking between authorities. The LGBF includes two measures at SCQF Level 5: CHN4, percentage of pupils gaining 5+ awards at SCQF level 5 and CHN6, percentage of pupils living in the 20% most deprived areas gaining 5+ awards at level 5. The published figures on the LGBF website <https://www.improvementservice.org.uk/benchmarking/explore-the-data> are Insight Leavers' data and 2023/24 data has not been published yet. Insight S6 based on S4 data is available to us now for 2023/24 and is shown in the lower charts against the equivalent historic data.

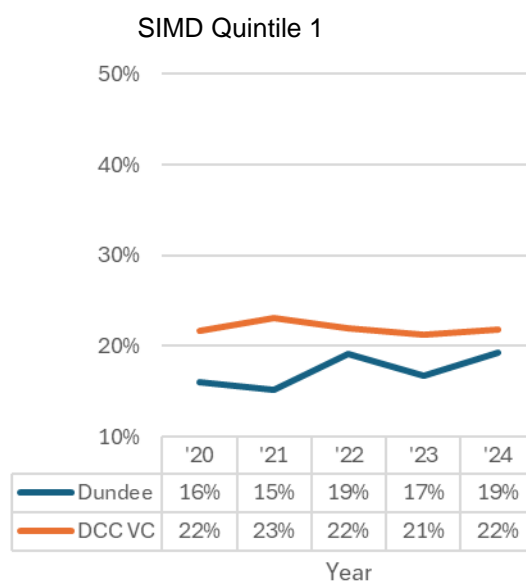
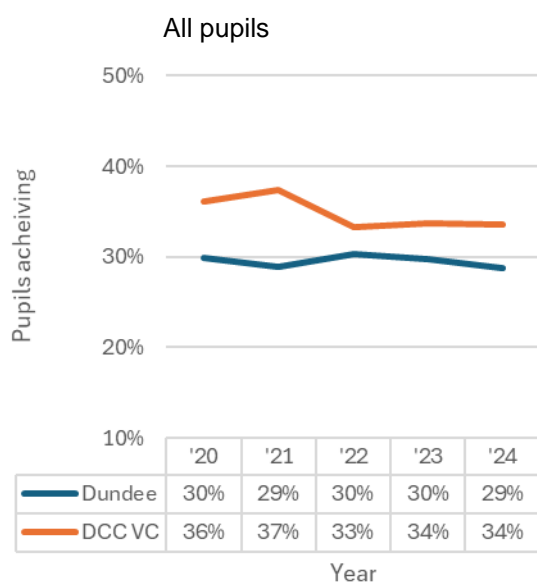
Dundee has seen a decline in leavers attaining 5 or more awards at SCQF Level 5 or better since 2021. Dundee also saw a decline in leavers from SIMD Quintile 1 attaining 5 or more awards at SCQF Level 5 or better from 50% in 2021 to 48% in 2023. However, it remains ahead of its Virtual Comparator on this measure.

5 or more awards at SCQF Level 6 or better

LGBF published data – Leavers



Equivalent S6 based on S4 stage data, available for 2023/24



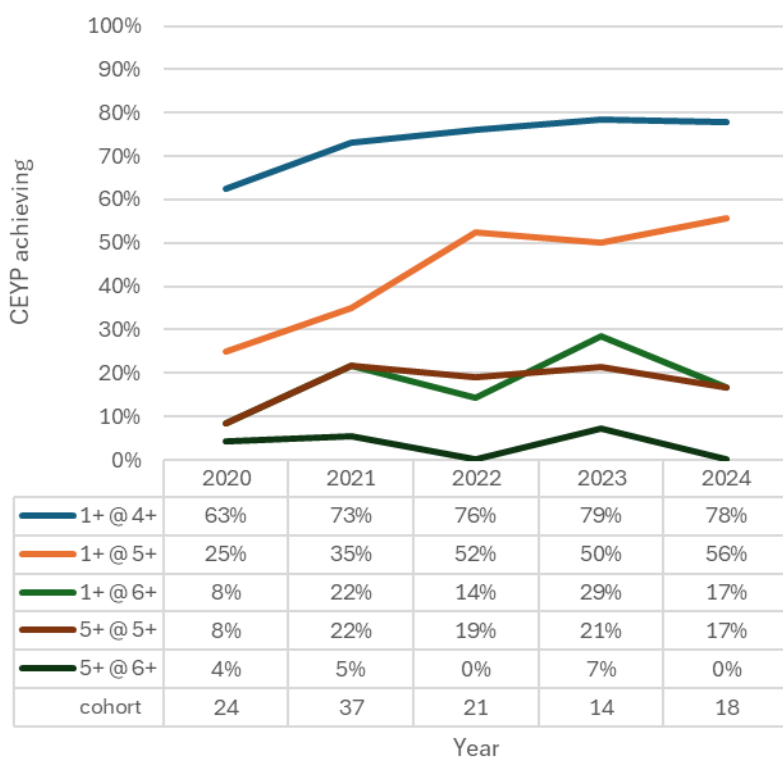
5 or more awards at SCQF Level 6 or better

The LGBF includes two measures at SCQF Level 6: CHN5, percentage of pupils gaining 5+ awards at SCQF level 6 and CHN7, percentage of pupils living in the 20% most deprived areas gaining 5+ awards at level 6. The published figures on the LGBF website <https://www.improvementservice.org.uk/benchmarking/explore-the-data> are Insight Leavers' data and 2023/24 data has not been published yet. S6 based on S4 data is available and is shown in the lower charts against the equivalent historic data.

Dundee has seen a decline in leavers attaining 5 or more awards at SCQF Level 6 from 32% in 2020 to 29% in 2023 and 2024.

S6 based on S4 attainment at SCQF Level 6 for pupils in SIMD Quintile 1 has fluctuated, between 16% and 19% in Dundee. 2024 saw a 2 point increase from 2023.

Breadth and Depth for care experiencing young people



As with previous measures, care experiencing young people show fluctuations in breadth and depth measures due to their small cohort sizes. There is though overall clear trends of improvement in the percentage gaining one or more awards at SCQF Levels 4 and 5.

SUBJECT LEVEL SQA RESULTS

The number of entries in 2024 in Dundee for each subject at National 5, Higher and Advanced Higher, together with Dundee's A-C pass rate, is shown in the tables below.

The SQA's published national A-C pass rate for education authorities is shown for context. Pass rates are dependent on presentation policies.

These results are as published in August and do not reflect the outcomes of any changes due to appeals.

Figures are based on all entries, regardless of Stage.

National 5

Subject	Dundee Entries	A-C Pass Rate	
		Dundee	National EA
Accounting	38	79%	84%
Administration and IT	133	85%	81%
Applications of Mathematics	536	61%	59%
Art and Design	240	98%	92%
Biology	436	61%	63%
Business Management	217	83%	82%
Chemistry	282	67%	75%
Classical Studies	14	57%	75%
Computing Science	138	70%	78%
Design and Manufacture	51	61%	73%
Drama	80	90%	93%
Engineering Science	96	75%	78%
English	1129	84%	84%
English for Speakers of Other Languages	8	88%	72%
Environmental Science	< 5	50%	55%
Fashion and Textile Technology	12	67%	75%
French	44	84%	84%
Geography	139	69%	75%
German	33	82%	84%
Graphic Communication	84	61%	65%
Health and Food Technology	77	66%	69%
History	298	59%	70%
Mandarin (Simplified)	< 5	100%	n/a
Mathematics	741	66%	67%
Media	14	86%	77%
Modern Studies	317	67%	74%
Music	123	94%	91%
Music Technology	39	92%	87%
Philosophy	< 5	50%	45%
Physical Education	472	90%	95%
Physics	243	73%	72%

Subject	Dundee Entries	A-C Pass Rate	
		Dundee	National EA
Practical Cake Craft	57	88%	70%
Practical Cookery	242	86%	83%
Practical Electronics	8	63%	74%
Practical Metalworking	53	57%	74%
Practical Woodworking	219	76%	82%
Religious, Moral and Philosophical Studies	54	61%	69%
Spanish	37	78%	85%

Higher

Subject	Dundee Entries	A-C Pass Rate	
		Dundee	National EA
Accounting	45	80%	74%
Administration and IT	111	78%	76%
Applications of Mathematics	77	60%	60%
Art and Design	183	91%	81%
Biology	50	80%	68%
Business Management	197	80%	77%
Chemistry	190	69%	73%
Childcare and Development	5	60%	74%
Computing Science	77	55%	71%
Design and Manufacture	21	38%	50%
Drama	46	72%	82%
Engineering Science	57	58%	60%
English	837	70%	73%
English for Speakers of Other Languages	8	50%	87%
Environmental Science	20	55%	54%
Fashion and Textile Technology	< 5	100%	82%
French	19	84%	84%
Geography	130	59%	73%
German	6	100%	86%
Graphic Communication	51	61%	70%
Health and Food Technology	87	75%	66%
History	211	57%	64%
Human Biology	244	63%	64%
Mandarin (Simplified)	< 5	100%	n/a
Mathematics	337	66%	71%
Media	21	33%	69%
Modern Studies	248	63%	75%
Music	85	93%	92%
Music Technology	44	98%	89%
Philosophy	13	54%	50%
Photography	53	87%	82%
Physical Education	249	81%	86%
Physics	162	69%	74%
Politics	49	65%	70%
Psychology	19	53%	70%
Religious, Moral and Philosophical Studies	96	74%	74%
Spanish	8	63%	82%

Advanced Higher

Subject	Dundee Entries	A-C Pass Rate	
		Dundee	National EA
Art and Design (Design)	25	96%	93%
Art and Design (Expressive)	39	95%	94%
Biology	52	58%	63%
Business Management	9	67%	62%
Chemistry	49	69%	68%
Computing Science	10	70%	67%
Drama	< 5	100%	86%
English	48	48%	68%
French	< 5	100%	80%
German	< 5	100%	n/a
Graphic Communication	< 5	50%	57%
History	21	76%	74%
Italian	< 5	100%	n/a
Mathematics	63	62%	67%
Modern Studies	22	55%	72%
Music	41	95%	92%
Music Technology	13	100%	82%
Physical Education	11	27%	66%
Physics	41	56%	70%
Religious, Moral and Philosophical Studies	9	100%	87%

Appeals

Dundee had a total entry of 11,234 awards at National 5, Higher and Advanced Higher. Following publication of results in August, 1,109 appeals were made by Dundee pupils. Of these, 83 were upheld by the SQA. We have not yet received updated statistics reflecting these 83 changes, but overall impact on the figures presented in this report will be minimal

GLOSSARY

Insight	<p>Insight is an online tool for benchmarking the senior phase. It is a professional tool available to secondary schools and local authorities to allow them to look at specific cohorts of learners and identify areas of success and where improvements can be made.</p> <p>Although Insight provides data on the attainment of a wide range of Scottish Credit and Qualifications Framework (SCQF) awards from a range of providers, not all SCQF achievement awards are included.</p>
Senior Phase	<p>The Senior Phase, which takes place from S4 to S6 in schools, is the phase when young people will begin to build up a portfolio of qualifications and awards.</p>
SIMD	<p>Scottish Index of Multiple Deprivation (SIMD) is a tool for identifying the places in Scotland where people are experiencing disadvantage across different aspects of their lives. SIMD gives a ranking for each small area, or data zone, which shows how deprived that area is compared to other areas.</p> <p>SIMD is a relative measure which shows whether one area is more deprived than another, but it does not say how much more deprived. A change in level of deprivation, or SIMD rank, shows that the relative deprivation compared to other parts of Scotland has changed, but this does not necessarily mean that the area has changed in an absolute sense.</p> <p>The latest figures show:</p> <ul style="list-style-type: none"> the area with the largest local share of deprived areas was Inverclyde, with 45% of data zones among the 20% most deprived areas in Scotland, Glasgow City has similar deprivation levels at 44%, Other local authorities with relatively high levels of deprivation include North Ayrshire and West Dunbartonshire at 40% and Dundee City at 38%. <p>SIMD considers deprivation by looking at income, employment, health, education, housing, access to services and levels of crime in an area.</p> <p>SIMD identifies deprived areas, not people. Over half of people on low income do not live in the 20% most deprived areas in Scotland. So, using SIMD to identify individuals experiencing deprivation will not work in some areas, such as remote rural areas and the islands.</p> <p>The SIMD 2020 introductory booklet is available.</p>
Tariff Points	<p>The Tariff Scale is a key feature of the Insight online benchmarking tool. It allows a score to be calculated that summarises a wide range of achievement and awards from a range of providers. The tariff score is based on elements from the Scottish Credit and Qualifications Framework (SCQF), in particular SCQF Credit Points and levels, as well as elements related to a qualification's composition. The tariff</p>

	<p>scale allows comparisons to be made between cohorts, schools, local authorities, and their virtual comparators.</p> <p>The tariff points accrued by schools, local authorities and cohorts should not be viewed as the only way of measuring performance and should be considered in the context of the other outcome measures included in the tool, for example, breadth and depth, improving post-school participation and raising attainment in literacy and numeracy as well as other data sources.</p> <p>Tariff points are based on the latest and best results a pupil achieves at school. For example, if a pupil has National 5 French and Higher French only the tariff points from the Higher award would be counted. The table below shows some example tariff scores.</p> <table><tr><td></td><td colspan="2">Pass</td></tr><tr><td>National 4</td><td colspan="2">33</td></tr><tr><td></td><td colspan="2"></td></tr><tr><td></td><td>Grade C</td><td>Grade A</td></tr><tr><td>National 5</td><td>64</td><td>84</td></tr><tr><td>Higher</td><td>160</td><td>204</td></tr><tr><td>Advanced Higher</td><td>400</td><td>480</td></tr></table> <p>At each SCQF level increment, the tariff score more than doubles. Significantly, a pupil attempting Advanced Highers in S6 has the potential to gain considerably more points than a pupil leaving with only Highers or National 5's. An S4 pupil with six awards at National 4 would score just under 200 points. A high achieving S6 pupil with six National 5s, five Highers and three Advanced Highers could have around 2,000 points.</p> <p>Insight divides each cohort into three sections for the Improving Attainment for All measures: the top attaining 20% of pupils, the middle 60% and the lowest 20%.</p> <p>Across Scotland local authorities and schools have different curriculum models in the senior phase. This makes it hard to benchmark tariffs between authorities as pupils sitting eight subjects can accrue more points than those sitting six. To address this the Insight tool introduced a complementary tariff scale. The complementary tariff only includes a pupil's results from their best 120 SCQF credits: generally speaking, a pupil's best five results.</p>		Pass		National 4	33						Grade C	Grade A	National 5	64	84	Higher	160	204	Advanced Higher	400	480
	Pass																					
National 4	33																					
	Grade C	Grade A																				
National 5	64	84																				
Higher	160	204																				
Advanced Higher	400	480																				
Virtual Comparator	<p>For each school leaver, then matching school leavers are randomly selected based on gender, additional support needs, stage of leaving school (S4, S5 or S6) and the social context in which they live (Scottish Index of Multiple Deprivation). These characteristics were selected due to their significance in explaining differences in the attainment and destinations of school leavers in Scotland.</p> <p>The virtual comparator is a valuable resource for self-evaluation and continuous improvement. It enables schools and local authorities to reflect on performance while considering relevant context and additional sources of information.</p>																					

Abbreviation	Full Words
SCQF	Scottish Credit and Qualifications Framework
SIMD	Scottish Index of Multiple Deprivation
ASN	Additional Support Needs
PP	Percentage Points
VC	Virtual Comparator
SIPS	School Improvement Partnerships

This page is intentionally left blank