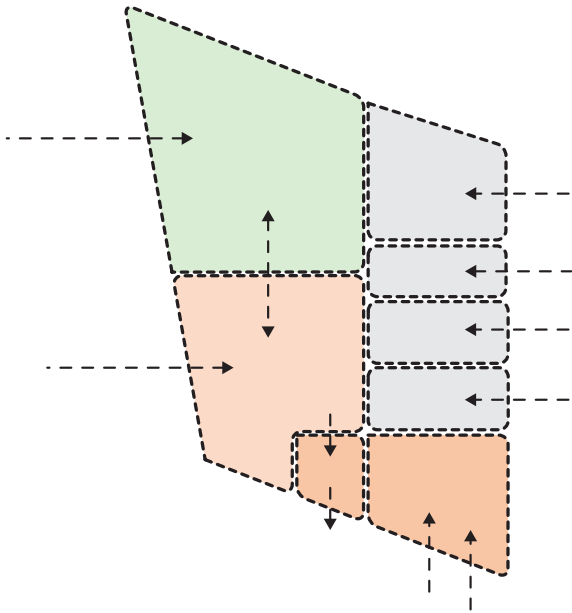


3.0 LAYOUT

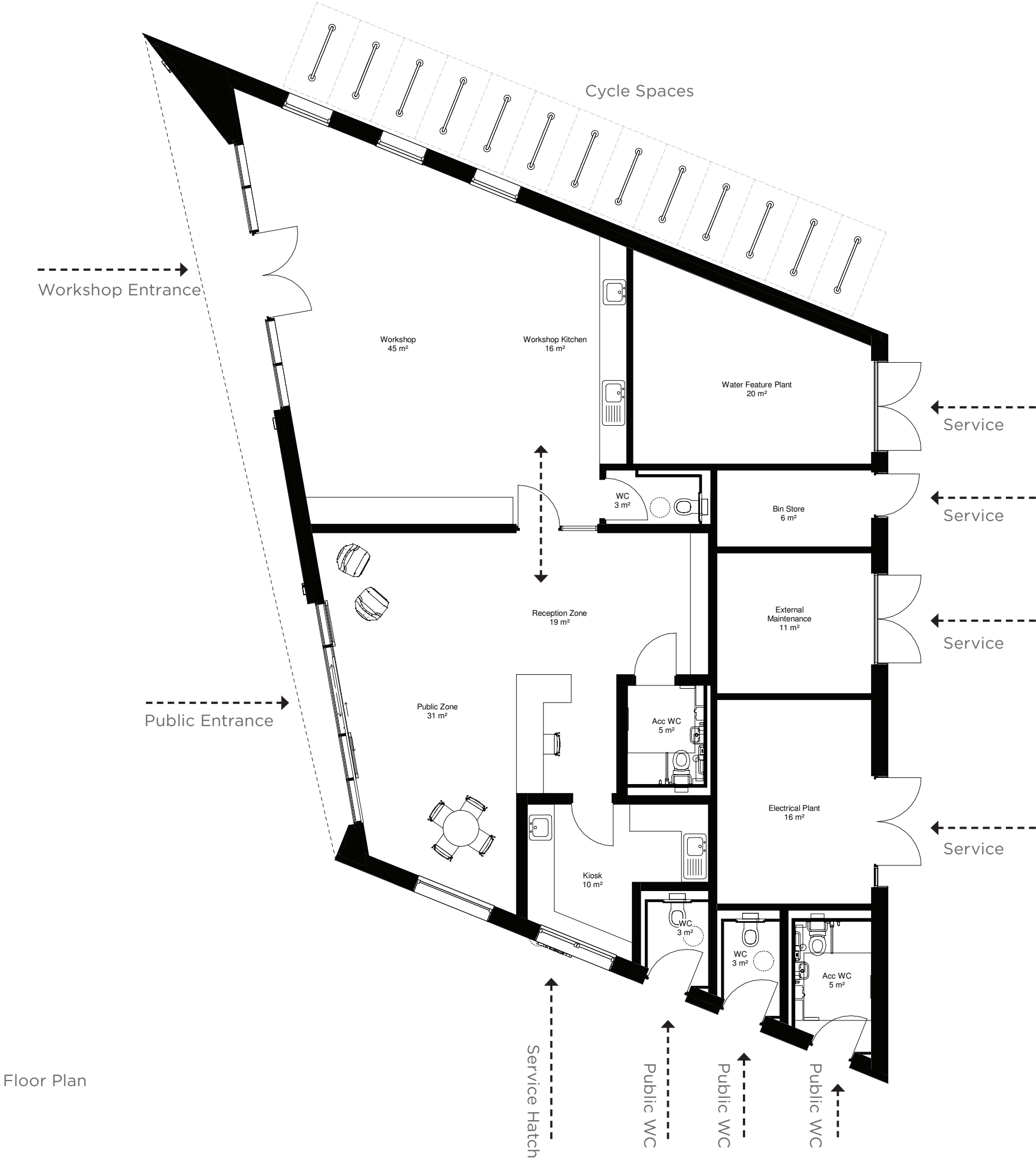
3.1 The layout of the proposed building is split into two functions, the Active Travel Hub itself which serves the cycle route which passes by Waterfront Place along the edge of the River Tay and the service accommodation to serve the new landscape.

3.2 The proposed Active Travel Hub will consist of a Workshop Space, a Reception/Information Room & a Kiosk. The purpose of the hub is to provide cyclists travelling along the cycle route a chance to have a break, conduct quick repairs & gather information about the route ahead. The hub will also serve as an information & bike centre for the local area. Extensive glazing to the South West elevation will allow the public to see into the workshop promoting cycling and the idea of active travel. This will be linked to the Reception/Information Room which will provide visitors with information on the cycle routes in the area as well as provide a meeting space for local cycling groups. The kiosk will provide a point at which visitors to Waterfront Place can buy refreshments whilst they enjoy the proposed landscape. These spaces all face South towards the centre of Waterfront Place providing services and activity to the new proposed square.

3.3 The auxiliary accommodation within the proposed building are all served from the North. These include service plant rooms which serve the building but also facilitate the water features within the landscape design. There is also a dedicated store for the maintenance of the landscape as well as storage for any



Adjacency Plan



Floor Plan