

DUNDEE STRATHMARTINE

Census Profile



Local Community Planning Partnership

*Ardler ♦ Baldrigon ♦ Caird Park ♦ Camperdown Country Park ♦ Clatto ♦
Downfield & The Dales ♦ Dunsinane North ♦ Kirkton & Trottick ♦ Sherbrook ♦
St Mary's & Brackens*



DUNDEE
PARTNERSHIP

Working together to make Dundee a better place

1.	Introduction	1
2.	Strathmartine LCPP Multi-Member Ward 2011 Census Profile.....	2
3.	Strathmartine Local Community Planning Partnership – Community Areas.....	4
3.1	Strathmartine LCPP Community Area Demographic Profile.....	4
4.	Strathmartine LCPP – SIMD Better Places Analysis.....	5
4.1	Percentage of the population who live in the 15% Most Deprived in SIMD publications	6
5.	Ethnicity	7
6.	Proficiency in English	8
6.1	English Skills	8
6.2	Proficiency in Speaking, Reading, Writing and Understanding English	9
7.	Health	10
7.1	Self Assessed Health	10
7.2	Health Limits	10
7.3	Scottish Index of Multiple Deprivation – Health Domain	11
7.4	Unpaid Care	12
8.	Education	13
8.1	Scottish Index of Multiple Deprivation – Education and Skills Domain	13
8.2	Educational Attainment	14
9.	Economic Activity.....	16
9.1	Economic Activity and Economic Inactivity.....	16
9.2	Scottish Index of Multiple Deprivation – Income Domain	17
10.	Employment	18
10.1	Proportion of the population who are In employment / Not in employment.....	18
10.2	Scottish Index of Multiple Deprivation – Employment Domain	19
11.	Scottish Neighbourhood Statistics – Income Statistics	20
11.1	Working Age Claiming Incapacity Benefits	21
11.2	Working Age Claiming Income Support	22
11.3	Working Age Claiming JSA	23
11.4	Pensionable age receiving Pension Credits	24
11.5	Summary of Changes shown in Above Indicators	25
12.	Scottish Index of Multiple Deprivation – Crime Domain	26

Introduction

This profile report is for the Strathmartine Local Community Planning Partnership (LCPP) and its community areas. The report presents statistical information from the 2011 Scottish Census which is a comprehensive consultation exercise involving every person/household in Scotland. The 2011 Census reflects the personal circumstances of individuals as at 27th March 2011.

Along with Census data the report also incorporates analysis from the Scottish Index of Multiple Deprivation (SIMD). The SIMD is the Scottish Government's official tool for identifying places in Scotland suffering from deprivation. Deprivation in this context relates to the range of problems that arise due to lack of resources or opportunities in relation to health, safety, education, employment, housing, access to services along with financial aspects. The most recent SIMD was published by the Scottish Government on 18th December 2012. As well as these data sources relevant indicators from the Scottish Neighbourhood Statistics (SNS) website are also incorporated in the report.



Strathmartine LCPP Multi-Member Ward 2011 Census Profile

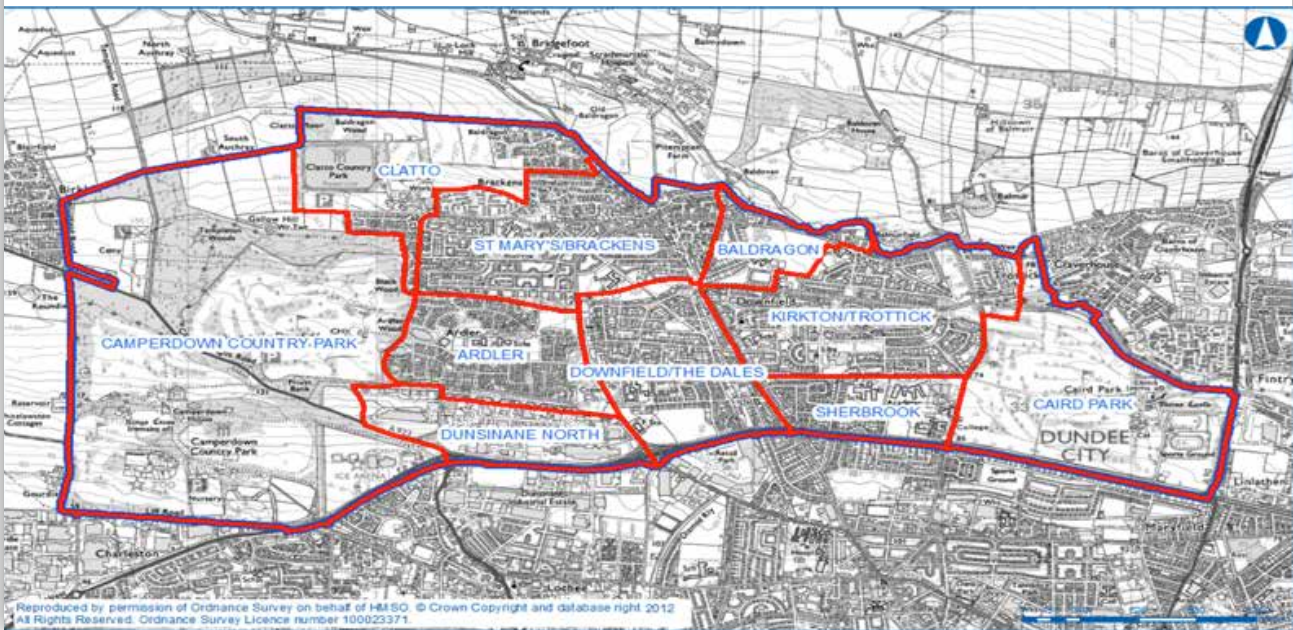
Table 1: Strathmartine LCPP Multi-Member Ward 2011 Census Profile

Title	S'martine		Dundee City		Scotland	
	2011	%	2011	%	2011	%
Population						
Total population: 2011	19,387	100	147,268	100	5,295,403	100
Total population 0-15	3,958	20.4	23,704	16.1	916,331	17.3
Total population 16-64	12,384	63.9	98,967	67.2	3,488,738	65.9
Total population 65+	3,045	15.7	24,597	16.7	890,334	16.8
Median age	40		38		41	
Ethnicity						
White British	18,720	96.6	131,610	89.4	4,862,787	91.8
White Other	402	2.1	6,850	4.7	221,620	4.2
Mixed or Multiple Ethnic Groups	45	0.2	685	0.5	19,815	0.4
Asian, Asian Scottish or Asian British	124	0.6	5,838	4.0	140,678	2.7
African	58	0.3	1,170	0.8	29,638	0.6
Caribbean or Black	16	0.1	269	0.2	6,540	0.1
Other ethnic groups	22	0.1	846	0.6	14,325	0.3
Marital Status (*SSCP - same sex civil partnership) (% of those age 16+)						
Single	5,383	34.9	53,321	43.2	1,549,492	35.4
Married	6,823	44.2	44,593	36.1	1,981,516	45.2
In a registered SSCP*	32	0.2	171	0.1	7,150	0.2
Separated	554	3.6	4,185	3.4	140,954	3.2
Divorced	1,383	9.0	11,493	9.3	359,704	8.2
Widowed or surviving partner	1,254	8.1	9,801	7.9	340,256	7.8
Economic Activity, Benefits and Tax Credits						
All people aged 16 to 74	14,151	100	111,319	100	3,970,530	100
Economically Active (as a % of those aged 16-74)						
Part Time Employed	2,174	15.4	13,971	12.6	529,816	13.3
Full Time Employed	5,414	38.3	38,595	34.7	1,573,416	39.6
Self Employed	681	4.8	5,405	4.9	297,693	7.5
Unemployed	843	6.0	6,384	5.7	189,414	4.8
Full Time Student	496	3.5	7,366	6.6	148,560	3.7
Economically Inactive (as a % of those aged 16-74)						
Retired	2,236	15.8	15,847	14.2	591,667	14.9
Full time student	560	4.0	11,232	10.1	218,412	5.5
Looking after home or family	567	4.0	3,543	3.2	141,542	3.6
Long term sick or disabled	899	6.4	6,732	6.0	203,975	5.1
Other	281	2.0	2,244	2.0	76,035	1.9
Ethnicity and Language						
Speaks English very well/well (age 3+)	18,463	98.9	140,068	98.3	5,044,683	98.6
Does not speak English well/at all (age 3+)	213	1.1	2,421	1.7	73,540	1.4
Country of Birth						
Born in UK	18,782	96.9	134,003	91.0	4,925,406	93.0
Other EU: Member countries in March 2001	129	0.7	2,248	1.5	60,596	1.1
Other EU: Accession countries April 2001 to March 2011	180	0.9	2,740	1.9	76,689	1.4
Other countries	296	1.5	8,277	5.6	232,712	4.4

	S'martine	%	Dundee City	%	Scotland	%
<i>Length of residence in UK</i>						
Born in UK	18,786	96.9	134,015	91.0	4,926,119	93.0
Less than two years	60	0.3	4,242	2.9	81,615	1.5
Two plus years less than five	101	0.5	2,744	1.9	80,234	1.5
Five years or more and less then ten years	124	0.6	2,187	1.5	69,340	1.3
Ten years or more	316	1.6	4,080	2.8	138,095	2.6
Education (highest level of qualification)						
No qualifications	5,113	33.1	33,208	26.9	1,173,116	26.8
Level 1 (standard grd, foundation general or credit)	4,395	28.5	28,185	22.8	1,010,875	23.1
Level 2 (higher, adv higher or equivalent)	1,856	12.0	19,238	15.6	627,423	14.3
Level 3 (SVQ level 4 or equivalent)	1,532	9.9	12,278	9.9	424,996	9.7
Level 4 (degree, professional qualification or equivalent)	2,533	16.4	30,655	24.8	1,142,662	26.1
Households						
Total household spaces	8,400	100	71,625	100	2,473,881	100
With residents	8,161	97.2	69,193	96.6	2,372,777	95.9
Vacant	239	2.8	1,731	2.4	64,462	2.6
Tenure (% of those with residents)						
Owner Occupied	5,016	61.5	34,885	50.4	1,470,986	62.0
Local Authority	1,555	19.1	12,826	18.5	312,745	13.2
Housing Association	1,080	13.2	7,971	11.5	263,674	11.1
Private Rented	472	5.8	12,921	18.7	263,459	11.1
Other	38	0.5	590	0.9	61,913	2.6
Composition						
No car	2,643	32.4	28,896	41.8	724,144	30.5
One car	3,662	44.9	28,176	40.7	1,002,344	42.2
Two or more cars	1,856	22.7	12,121	17.5	646,289	27.2
Lone parent (with child)	954	11.7	6,530	9.4	170,002	7.2
Pensioner only	2,080	25.5	14,489	20.9	490,839	20.7
Dependent child (all ages)	2,590	31.7	16,148	23.3	616,489	26.0
No adults in employment (with children)	535	6.6	3,289	4.8	93,152	3.9
One or more persons with long term health problem or disability (with children)	680	8.3	3,908	5.6	135,831	5.7
Health and Caring						
<i>Long term health condition or disability</i>						
Activites limited	4,114	21.2	30,711	20.9	1,040,371	19.6
Activities not limited	15,273	78.8	116,557	79.1	4,255,032	80.4
General Health						
Very Good	10,015	51.7	75,918	51.6	2,778,481	52.5
Good	5,810	30.0	44,382	30.1	1,575,000	29.7
Fair	2,408	12.4	18,027	12.2	644,881	12.2
Bad	863	4.5	6,731	4.6	226,154	4.3
Very bad	291	1.5	2,210	1.5	70,887	1.3
Provision of unpaid care						
No Unpaid Care	17,476	90.1	134,196	91.1	4,803,172	90.7
1 to 49 hours per week	1,235	6.4	6,833	4.6	360,149	6.8
50 or more hours per week	676	3.5	6,239	4.2	132,082	2.5

Strathmartine LCPP Community Areas

Map 1: Strathmartine LCPP Community Areas



Strathmartine Local Community Planning Partnership consists of 10 community areas that are shown above in **Map 1**.

3.1 Strathmartine LCPP Community Area Demographic Profile

Table 2: Strathmartine LCPP Community Area Demographic profile

Community Area	Total Population	Children	%	Working Age	%	Pensionable Age	%
Ardlar	2617	611	23%	1664	64%	342	13%
Baldragon	543	69	13%	349	64%	125	23%
Caird Park	13	2	15%	9	69%	2	15%
Camperdown Country Park	15	5	33%	9	60%	1	7%
Clatto	1287	342	27%	905	70%	40	3%
Downfield/The Dales	2777	408	15%	1660	60%	709	26%
Dunsinane North	3	0	0%	1	33%	2	67%
Kirkton/Trottick	5198	1305	25%	3357	65%	536	10%
Sherbrook	782	112	14%	504	64%	166	21%
St Mary's/Brackens	6119	1104	18%	3904	64%	1111	18%

Source: Scottish Census 2011 (Table KS102SC)

Strathmartine LCPP – SIMD Better Places Analysis

The Scottish Index of Multiple Deprivation (SIMD) is the Scottish Government's official tool for identifying places in Scotland suffering from deprivation. Deprivation in this context refers to the range of problems that arise due to the lack of resources or opportunities covering health, safety, education, employment, housing, access to services and financial aspects. The most recent SIMD was released by the Scottish Government in December 2012.

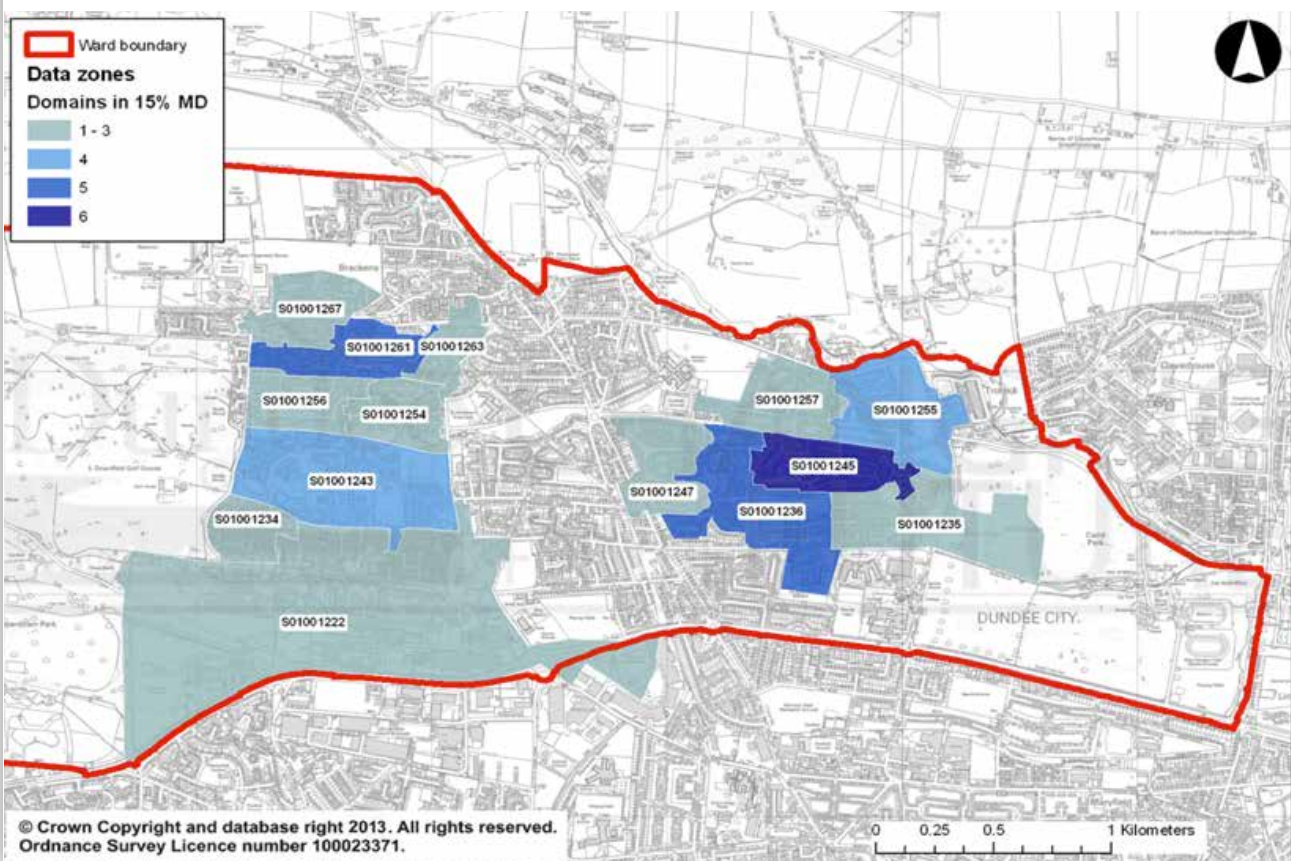
The SIMD divides Scotland into 6,505 small areas called data zones with each containing around 350 households. The index provides a relative ranking for each data zone from 1 (most deprived) to 6,505 (least deprived). The SIMD allows organisations to target policies and place resources in areas with greatest need.

In order to calculate the levels of deprivation the index looks at seven different aspects these are:

- Employment
- Income
- Health
- Education, Skills and Training
- Geographical Access to Services
- Crime
- Housing

Map 2 shows how many domains each data zone in Strathmartine Community Planning Partnership have ranked within the 15% most deprived.

Map 2: Strathmartine LCPP – Better Places Data Zone Analysis



Source: DCC Information & Research Team, Better Places Analysis

4.1 Percentage of the population who live in the 15% Most Deprived Data Zones in SIMD publications

This reflects how many data zones within each community area are ranked within the 15% Most Deprived of each SIMD and what percentage of the population live in these data zones.

Table 3: % Population who live in the 15% Most Deprived Data Zones in SIMD publications

Community Area	2004	2006	2009	2012	% Change
Ardler	59%	84%	77%	78%	18.5%
Baldrigon	0%	0%	0%	0%	0.0%
Caird Park	0%	0%	0%	0%	0.0%
Camperdown Country Park	0%	0%	0%	0%	0.0%
Clatto	0%	0%	0%	0%	0.0%
Downfield/The Dales	0%	3%	3%	4%	3.7%
Dunsinane North	0%	0%	0%	0%	0.0%
Kirkton/Trottick	67%	83%	82%	82%	15.5%
Sherbrook	0%	0%	0%	0%	0.0%
St Mary's/Brackens	14%	14%	14%	24%	9.8%
Strathmartine	30%	37%	37%	41%	11.3%
DCC	28%	29%	29%	29%	1%

Source: Scottish Government

Figure 1: % Population who live in the 15% Most Deprived Data Zones in SIMD publications

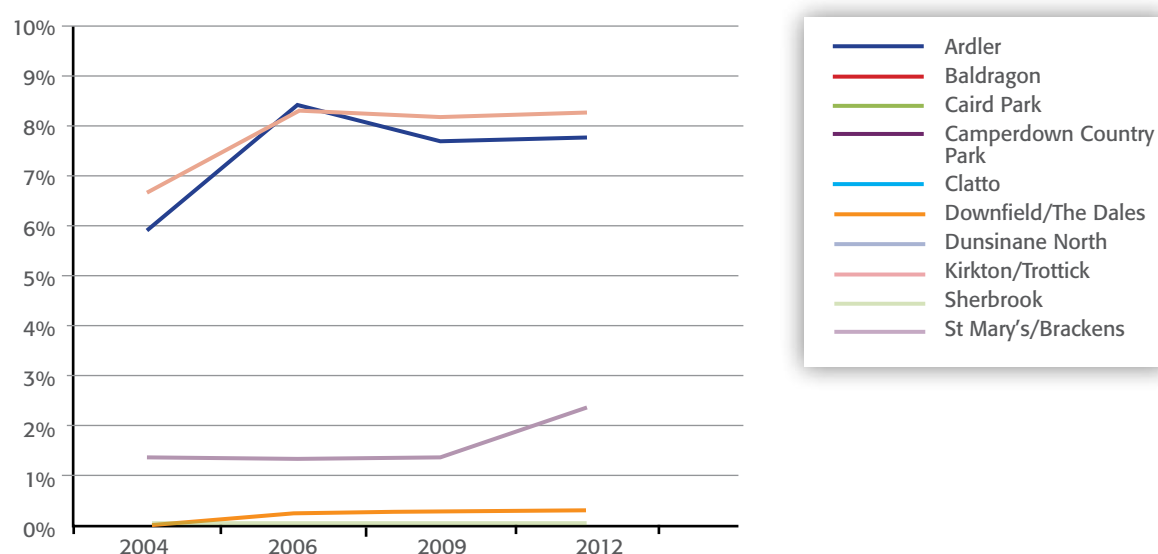


Table 3 and **Figure 1** show that Ardler, Kirkton / Trottick and St Mary's / Brackens showed notable increases in the percentage of the population living in data zones ranked within the 15% Most Deprived. The other community areas have zero or a small percentage of those living in the 15% Most Deprived of the SIMD.

Table 4 shows the ethnicity of individuals living in the community areas which form Strathmartine LCPP.

Table 4: Strathmartine LCPP Ethnicity Breakdown

Community Area	White	Mixed or Multiple Ethnic Groups	Asian Asian Scottish or Asian British	African	Caribbean or Black	Other Ethnic Groups
Ardler	98.4%	0.4%	0.6%	0.5%	0.1%	0.1%
Baldragon	98.8%	0.4%	0.3%	0.0%	0.0%	0.5%
Caird Park	95.2%	0.0%	4.8%	0.0%	0.0%	0.0%
Camperdown Country Pk	97.3%	1.8%	0.9%	0.0%	0.0%	0.0%
Clatto	98.0%	0.4%	0.8%	0.4%	0.0%	0.4%
Downfield/The Dales	98.1%	0.3%	1.1%	0.4%	0.1%	0.0%
Dunsinane North	100.0%	0.0%	0.0%	0.0%	0.0%	0.0%
Kirkton/Trottick	98.2%	0.1%	0.9%	0.5%	0.2%	0.1%
Sherbrook	99.2%	0.6%	0.0%	0.0%	0.0%	0.1%
St Mary's/Brackens	99.3%	0.1%	0.3%	0.1%	0.0%	0.1%

Source: Scottish Census 2011 (Table KS201SC)

Table 4 shows that the majority of individuals indicated that their ethnicity was "White". A small proportion of individuals indicated their ethnicity was "Mixed or Multiple Ethnic Groups". In Caird Park 4.8% of the population indicated their ethnicity was "Asian, Asian Scottish or Asian British". The proportion of the population who indicated their ethnicity was "African", "Caribbean or Black" or "Other Ethnic Groups" was consistent across all areas.

Proficiency in English

Tables 5 and 6 provide details on how individuals in Strathmartine Local Community Planning Partnership (LCPP) rate their skills in speaking English as well as their proficiency in speaking, reading, writing and understanding English.

6.1 English Skills

Table 5: Strathmartine LCPP: Proficiency in Speaking English

Community Area	Speaks English very well	Speaks English well	Does not speak English well	Does not speak English at all
Ardler	89.8%	9.3%	0.5%	0.3%
Baldragon	86.6%	12.0%	1.3%	0.0%
Caird Park	85.7%	12.6%	1.7%	0.0%
Camperdown Country Pk	94.8%	5.2%	0.0%	0.0%
Clatto	94.1%	5.6%	0.2%	0.1%
Downfield/The Dales	90.2%	8.3%	1.3%	0.2%
Dunsinane North	85.7%	14.3%	0.0%	0.0%
Kirkton/Trottick	86.2%	11.9%	1.4%	0.5%
Sherbrook	93.0%	6.7%	0.3%	0.0%
St Mary's/Brackens	89.5%	9.7%	0.7%	0.0%

Source: Scottish Census 2011 (Table QS205SC)

Please note this table is based on all individuals aged 3 years and over

Table 5 shows the majority of individuals indicated that they speak English "Very well" or "Well". The proportion of respondents who indicated that they "Do not speak English well" ranged from 0.0% to 1.7% across all community areas. Overall very few individuals indicated that they "Do not speak English at all".

6.2 Proficiency in Speaking, Reading, Writing and Understanding English

Table 6: Proficiency in Speaking, Reading, Writing and Understanding English

Community Area	Speaks, reads and writes English	Speaks and reads but does not write English	Speaks but does not read or write English	Reads but does not speak or write English	Understands but does not speak, read or write English	Other combination of skills in English	No skills in English
Ardler	91.9%	0.4%	3.8%	0.0%	2.8%	0.7%	0.2%
Baldragon	91.4%	1.9%	3.8%	0.0%	2.4%	0.6%	0.0%
Caird Park	100.0%	0.0%	0.0%	0.0%	0.0%	0.0%	0.0%
Camperdown Country Park	100.0%	0.0%	0.0%	0.0%	0.0%	0.0%	0.0%
Clatto	94.9%	0.5%	3.5%	0.0%	1.0%	0.2%	0.0%
Downfield/ The Dales	93.2%	0.7%	2.7%	0.0%	2.8%	0.4%	0.2%
Dunsinane North	100.0%	0.0%	0.0%	0.0%	0.0%	0.0%	0.0%
Kirkton/Trottick	91.5%	0.6%	4.3%	0.0%	2.9%	0.6%	0.1%
Sherbrook	95.8%	0.4%	1.6%	0.0%	1.6%	0.7%	0.0%
St. Mary's/ Brackens	93.2%	0.5%	3.4%	0.0%	2.1%	0.7%	0.0%

Source: Scottish Census 2011 (Table QS213SC)

Please note this table is based on all individuals aged 3 years and over

Table 6 shows the majority of individuals in all community areas indicated that they can “Speak, read and write English”. In the Ardler, Baldragon, Clatto, Kirkton/Trottick and St Mary’s/Brackens areas between 3% and 4% of the population indicated they “Speak but do not read or write English”. In Ardler, Baldragon, Downfield/The Dales, Kirkton/Trottick and St Mary’s/Brackens between 2% and 3% indicated they “Understand but do not speak, read or write English”. Very few individuals indicated they had “No skills in English”.

7.1 Self Assessed Health

Table 7: Self Assessed Health

Community Area	Very Good Health	Good Health	Fair Health	Bad Health	Very Bad Health
Ardler	52.1%	25.4%	14.6%	5.9%	1.9%
Baldragon	54.7%	28.5%	13.4%	2.8%	0.6%
Caird Park	46.2%	38.5%	15.4%	0.0%	0.0%
Camperdown Country Pk	76.9%	23.1%	0.0%	0.0%	0.0%
Clatto	70.9%	23.4%	4.1%	1.2%	0.4%
Downfield/The Dales	49.9%	30.8%	13.3%	4.5%	1.5%
Dunsinane North	0.0%	50.0%	50.0%	0.0%	0.0%
Kirkton/Trottick	49.3%	31.0%	12.7%	5.0%	1.9%
Sherbrook	55.4%	31.2%	9.5%	3.5%	0.4%
St. Mary's/Brackens	49.8%	31.7%	12.9%	4.2%	1.4%

Source: Scottish Census 2011 (Table QS302SC)

Table 7 shows that apart from Dunsinane North the majority of individuals indicated they had "Very Good" or "Good" health. In Dunsinane North, 50% of individuals indicated they had "Good" health and 50% indicated they had "Fair" health. Ardler had the greatest proportion of individuals who indicated they had "Very bad" or "Bad" health with 7.8% indicating this reflected their personal circumstances.

7.2 Health Limits

Table 8: Health Limits

Community Area	Day-to-Day activities not limited	Day-to-Day activities limited a little	Day-to-Day activities limited a lot
Ardler	76.3%	10.6%	13.1%
Baldragon	76.2%	9.6%	14.2%
Caird Park	78.6%	14.3%	7.1%
Camperdown Country Pk	100.0%	0.0%	0.0%
Clatto	93.7%	3.3%	3.0%
Downfield/The Dales	74.5%	12.5%	13.0%
Dunsinane North	33.3%	33.3%	33.3%
Kirkton/Trottick	78.3%	10.4%	11.3%
Sherbrook	82.4%	10.4%	7.3%
St. Mary's/Brackens	79.0%	10.9%	10.1%

Source: Scottish Census 2011 (Table QS303SC)

Table 8 shows that apart from those in the Dunsinane North area, the majority of respondents living in Strathmartine LCPP indicated their “Day-to-day activities were not limited”.

7.3 Scottish Index of Multiple Deprivation – Health Domain

The health domain in the SIMD examines rates of mortality, hospital stays related to alcohol and drug misuse, illness, prescription rates for certain conditions and low birth weights.

Table 9 shows the percentages of the population for each Strathmartine community area that live in a data zone that is ranked within the 15% most deprived in Scotland within the Health domain.

For full description of the indicators and the Health Domain itself use the following link:

<http://simd.scotland.gov.uk/publication-2012/technical-notes/domains-and-indicators/health-domain/>

Table 9: % Population Living in 15% Most Deprived Data Zones of the Health Domain

Community Area	2004	2006	2009	2012	% Change
Ardler	100%	84%	77%	78%	-22%
Baldragon	0%	0%	0%	0%	0%
Caird Park	0%	0%	0%	0%	0%
Camperdown Country Pk	0%	0%	0%	0%	0%
Clatto	0%	0%	0%	0%	0%
Downfield/The Dales	3%	3%	3%	4%	1%
Dunsinane North	0%	0%	0%	0%	0%
Kirkton/Trottick	31%	65%	64%	66%	35%
Sherbrook	0%	0%	0%	0%	0%
St. Mary's/Brackens	24%	24%	24%	14%	-10%
Strathmartine	29%	35%	36%	33%	5%
DCC	30%	23%	21%	21%	-10%

Source: Scottish Government

7.4 Unpaid Care

Table 10 shows the proportion of individuals living in Strathmartine communities who provide some form of unpaid care. **Table 11** shows the levels of care provided by those who indicated that they provide some form of unpaid care.

Table 10: % of individuals who provide unpaid care

Community Area	Provides no unpaid care	Provides unpaid care
Ardler	90.8%	9.2%
Baldragon	89.5%	10.5%
Caird Park	100.0%	0.0%
Camperdown Country Park	93.3%	6.7%
Clatto	93.6%	6.4%
Downfield/The Dales	88.9%	11.1%
Dunsinane North	100.0%	0.0%
Kirkton/Trottick	89.9%	10.1%
Sherbrook	89.1%	10.9%
St. Mary's/Brackens	90.2%	9.8%

Source: Scottish Census 2011 (Table QS301SC)

Table 10 shows the majority of individuals living in Strathmartine LCPP "Provide no unpaid care". Between 10% and 11% of individuals in Baldragon, Downfield/The Dales, Kirkton/Trottick and Sherbrook indicated they "Provide unpaid care".

Table 11: Levels of unpaid care provided

Community Area	Provides 1 to 19 hrs unpaid care a week	Provides 20 to 49 hrs unpaid care a week	Provides 50 or more hrs unpaid care a week
Ardler	45.0%	20.4%	34.6%
Baldragon	54.4%	21.1%	24.6%
Caird Park	Not Applicable	Not Applicable	Not Applicable
Camperdown Country Pk	100.0%	0.0%	0.0%
Clatto	65.1%	21.7%	13.3%
Downfield/The Dales	43.8%	22.4%	33.8%
Dunsinane North	Not Applicable	Not Applicable	Not Applicable
Kirkton/Trottick	37.6%	16.5%	45.9%
Sherbrook	69.4%	10.6%	20.0%
St. Mary's/Brackens	49.2%	17.1%	33.7%

Source: Scottish Census 2011 (Table QS301SC)

More than half of those who "Provide unpaid care" in the Baldragon, Camperdown Country Park, Clatto and Sherbrook areas indicated they "Provide 1 to 19 hours of unpaid care a week". In Downfield/The Dales 22.4% of those who "Provide unpaid care" indicated they "Provide 20 to 49 hours of unpaid care a week". In Kirkton/Trottick 45.9% of those who "Provide unpaid care" indicated they "Provide 50 or more hours of unpaid care a week".

The following section looks at the educational attainment of individuals living in communities which fall under the Strathmartine Local Community Planning Partnership.

8.1 Scottish Index of Multiple Deprivation – Education and Skills Domain

The education and skills domain in the Scottish Index of Multiple Deprivation examines school absences, pupil performance, working age population with no qualifications, FE/HE education rates and unemployed youths (16-19) not in full time education, employment or training. **Table 12** shows the percentage of children in each Strathmartine community area that live in a data zone that is ranked within the 15% most deprived in Scotland within the education and skills domain.

For full description of the indicators and the Education Domain itself use the following link:

<http://simd.scotland.gov.uk/publication-2012/technical-notes/domains-and-indicators/education-skills-and-training-domain/>

Table 12: % of Children living in the 15% Most Deprived Data zones of the Education and Skills Domain

Community Area	2004	2006	2009	2012	% Change
Ardler	64%	63%	0%	0%	-64%
Baldragon	0%	0%	0%	0%	0%
Caird Park	0%	0%	0%	0%	0%
Camperdown Country Pk	0%	0%	0%	0%	0%
Clatto	0%	0%	0%	0%	0%
Downfield/The Dales	0%	4%	0%	0%	0%
Dunsinane North	0%	0%	0%	0%	0%
Kirkton/Trottick	87%	95%	86%	87%	0%
Sherbrook	0%	0%	0%	0%	0%
St. Mary's/Brackens	43%	29%	39%	38%	-5%
Srathmartine	51%	48%	40%	40%	-10%
DCC	33%	35%	35%	33%	0%

Source: Scottish Government

8.2 Educational Attainment

Table 13 shows the percentage of the population aged 16 and over in each community area who indicated that they had qualifications or no qualifications. **Table 14** shows the highest level of qualification achieved by those who indicated that they had gained qualifications.

Table 13: % of population aged 16 and over with qualifications or no qualifications

Community Area	All people aged 16 and over with qualifications	All people aged 16 and over with no qualifications
Ardler	67.1%	32.9%
Baldragon	71.0%	29.0%
Caird Park	69.2%	30.8%
Camperdown Country Pk	80.0%	20.0%
Clatto	88.0%	12.0%
Downfield/The Dales	66.8%	33.2%
Dunsinane North	33.3%	66.7%
Kirkton/Trottick	61.0%	39.0%
Sherbrook	80.7%	19.3%
St. Mary's/Brackens	65.1%	34.9%

Source: Scottish Census 2011 (Table QS501SC)

Please note: This table is based on all individuals aged 16 and over. It is important to remember individuals who reported no qualifications will include those who are still studying towards the completion of their formal education.

Table 13 shows that apart from the Dunsinane North area, the majority of people aged 16 and over living in the communities which form Strathmartine LCPP indicated they have some form of educational qualifications.

Table 14: Highest level of qualifications achieved by those aged 16 and over

Community Area	Highest Level of Qualification: Level 1 (Standard grd, foundation general, credit or equivalent)	Highest Level of Qualification: Level 2 (Higher, Adv Higher or equivalent)	Highest Level of Qualification: Level 3 (SVQ level 4 or equivalent)	Highest Level of Qualification: Level 4 (Degree, professional qualification or equivalent)
Ardler	47.4%	14.6%	15.7%	22.3%
Baldragon	33.9%	18.2%	15.8%	32.1%
Caird Park	44.4%	22.2%	11.1%	22.2%
Camperdown Country Pk	25.0%	12.5%	12.5%	50.0%
Clatto	32.4%	17.8%	14.3%	35.5%
Downfield/The Dales	39.0%	18.5%	14.8%	27.6%
Dunsinane North	100.0%	0.0%	0.0%	0.0%
Kirkton/Trottick	45.4%	18.6%	15.6%	20.4%
Sherbrook	31.5%	18.6%	13.9%	36.0%
St. Mary's/Brackens	45.7%	18.5%	14.0%	21.8%

Source: Scottish Census 2011 (Table QS501SC)

Please note this table is based on the % of those who had gained a qualification

Table 14 shows that more than 44% of those with qualifications in Ardler, Caird Park, Dunsinane North, Kirkton/Trottick and St Mary's/Brackens indicated their "Highest level of qualification was at Level 1". In Caird Park 22.2% of individuals with qualifications highlighted their "Highest level of qualification was at Level 2". Around 16% of those with qualifications in Ardler, Baldragon and Kirkton/Trottick indicated their "Highest level of qualification was at Level 3". In the Camperdown Country Park area 50% of those with qualifications indicated their "Highest level of qualification was at Level 4".

9.1 Economic Activity and Economic Inactivity

Table 15 provides details of individuals living in Strathmartine communities who are aged 16-74 and “Economically Active” or “Economically Inactive”.

As defined in the Census, a person is considered “Economically Active” if they are employed, self-employed or unemployed but looking for work and able to start within two weeks. Full-time students who are employed or looking for work and able to start within two weeks are also classified as “Economically Active”.

Individuals classified as “Economically Inactive” include people not working/not looking for work as they may be retired, a student, looking after their home/family or long-term sick/disabled.

Table 15: % of Individuals aged 16-74 who are Economically Active or Economically Inactive

Community Area	Economically Active	Economically Inactive
Ardler	65.9%	34.1%
Baldragon	75.4%	24.6%
Caird Park	54.5%	45.5%
Camperdown Country Pk	88.9%	11.1%
Clatto	87.6%	12.4%
Downfield/The Dales	65.9%	34.1%
Dunsinane North	0.0%	100.0%
Kirkton/Trottick	65.9%	34.1%
Sherbrook	74.0%	26.0%
St. Mary's/Brackens	66.2%	33.8%

Source: Scottish Census 2011 (Table QS601SC)

Please note: The above table is based on all individuals aged 16-74. Therefore this dataset will include individuals who are still at school and those who are retired.

Table 15 shows that apart from the Dunsinane North area the majority of individuals aged 16-74 living in the communities which form Strathmartine LCCP would define themselves as “Economically Active”.

9.2 Scottish Index of Multiple Deprivation – Income Domain

For each data zone the Scottish Index of Multiple Deprivation (SIMD) produces a count of individuals classed as income deprived. **Table 16** shows the proportion of the population who are income deprived in each of the SIMD publications between 2004 and 2012.

Table 16: % of the population who are classed as Income Deprived in SIMD 2004 to 2012

Community Area	2004	2006	2009	2012	% Change
Ardler	36%	29%	37%	27%	-9%
Baldrigon	8%	9%	7%	8%	0%
Caird Park	13%	13%	14%	0%	-13%
Camperdown Country Pk	0%	7%	11%	8%	8%
Clatto	2%	3%	6%	5%	3%
Downfield/The Dales	13%	13%	16%	12%	0%
Dunsinane North	0%	0%	0%	0%	0%
Kirkton/Trottick	33%	29%	39%	29%	-4%
Sherbrook	3%	5%	4%	5%	2%
St. Mary's/Brackens	16%	16%	21%	17%	1%
Strathmartine	21%	19%	26%	19%	-2%
DCC	20%	19%	20%	18%	-2%

Source: Scottish Government

Figure 2: % Population who are classed as Income Deprived in SIMD 2004 to 2012

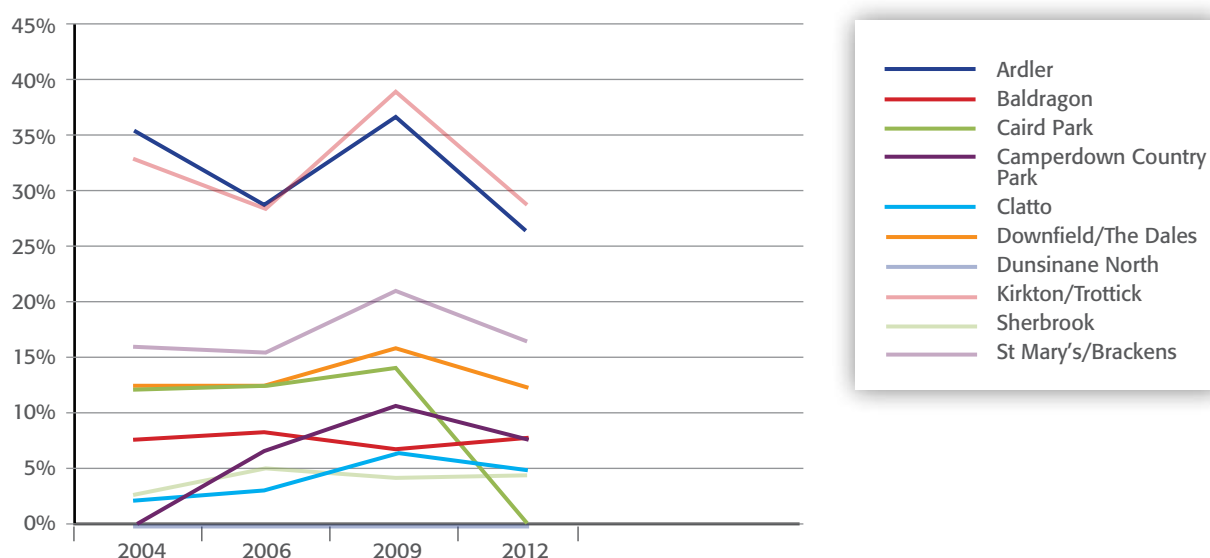


Table 16 and **Figure 2** show that there is a wide variation within Strathmartine of levels of income deprivation.

Ardler and Kirkton / Trottick have the highest percentage of the population classed as income deprived but have both seen a decrease between SIMD 2009 and SIMD 2012.

10.1 Proportion of the population who are In employment/ Not in employment

Table 17 shows the proportion of the population aged 16-74 who are “In employment” and “Not in employment”.

Table 17: % of the population in employment / not in employment

Community Area	In Employment	Not in Employment
Ardler	56.6%	43.4%
Baldrigon	70.3%	29.7%
Caird Park	75.0%	25.0%
Camperdown Country Pk	100.0%	0.0%
Clatto	83.2%	16.8%
Downfield/The Dales	62.0%	38.0%
Dunsinane North	0.0%	100.0%
Kirkton/Trottick	56.6%	43.4%
Sherbrook	71.5%	28.5%
St. Mary's/Brackens	60.0%	40.0%

Source: Scottish Census 2011 (Table QS612SC)

Please note: The above table is based on all individuals aged 16 to 74. Therefore this dataset will include individuals who are still at school and those who are retired.

Table 17 shows that apart from Dunsinane North, the majority of individuals indicated that they were “In employment”.

Table 18 examines when those who indicated they were “Not in employment” last worked.

Table 18: Not In employment: Last worked

Community Area	Never worked	Last worked before 2001	Last worked 2001-2005	Last worked 2006-2011
Ardler	20.5%	31.5%	13.7%	34.2%
Baldrigon	24.1%	26.7%	12.1%	37.1%
Caird Park	50.0%	50.0%	0.0%	0.0%
Camperdown Country Pk	Not Applicable	Not Applicable	Not Applicable	Not Applicable
Clatto	34.0%	12.2%	7.7%	46.2%
Downfield/The Dales	15.2%	36.2%	16.8%	31.8%
Dunsinane North	0.0%	100.0%	0.0%	0.0%
Kirkton/Trottick	24.7%	25.3%	13.1%	36.8%
Sherbrook	11.5%	27.3%	15.8%	45.5%
St. Mary's/Brackens	14.9%	28.6%	18.6%	37.9%

Source: Scottish Census 2011 (Table QS612SC)

Please note: The above table is based on all individuals aged 16 to 74. Therefore this dataset will include individuals who are still at school and those who are retired.

In the Caird Park area 50% of individuals “Not in employment” indicated they had “Never worked”. In the Downfield/The Dales community area 36.2% of those “Not in employment” indicated they had “Last worked before 2001”. In the St. Marys/Brackens area 18.6% of those “Not in employment” indicated they had “Last worked 2001-2005”. Around 46% of those “Not in employment” in the Sherbrook and Clatto areas indicated they had “Last worked 2006-2011”.

10.2 Scottish Index of Multiple Deprivation – Employment Domain

For each data zone the Scottish Index of Multiple Deprivation (SIMD) publication produces a count of individuals classed as employment deprived. **Table 19** shows the proportion of the population who are classed as employment deprived in each of the SIMD publications between 2004 and 2012.

Table 19: % of the population who are classed as Employment Deprived in SIMD 2004 to 2012

Community Area	2004	2006	2009	2012	% Change
Ardler	30%	26%	23%	23%	-7%
Baldragon	9%	9%	7%	7%	-2%
Caird Park	0%	0%	0%	0%	0%
Camperdown Country Pk	13%	10%	8%	6%	-7%
Clatto	5%	5%	6%	5%	-1%
Downfield/The Dales	14%	14%	13%	14%	0%
Dunsinane North	0%	0%	0%	0%	0%
Kirkton/Trottick	22%	23%	21%	24%	2%
Sherbrook	7%	9%	6%	8%	1%
St. Mary’s/Brackens	17%	15%	15%	17%	0%
Strathmartine	18%	17%	16%	18%	0%
DCC	17%	17%	16%	17%	0%

Source: Scottish Government

Figure 3: % of Population who are classed as Employment Deprived in SIMD 2004 to 2012

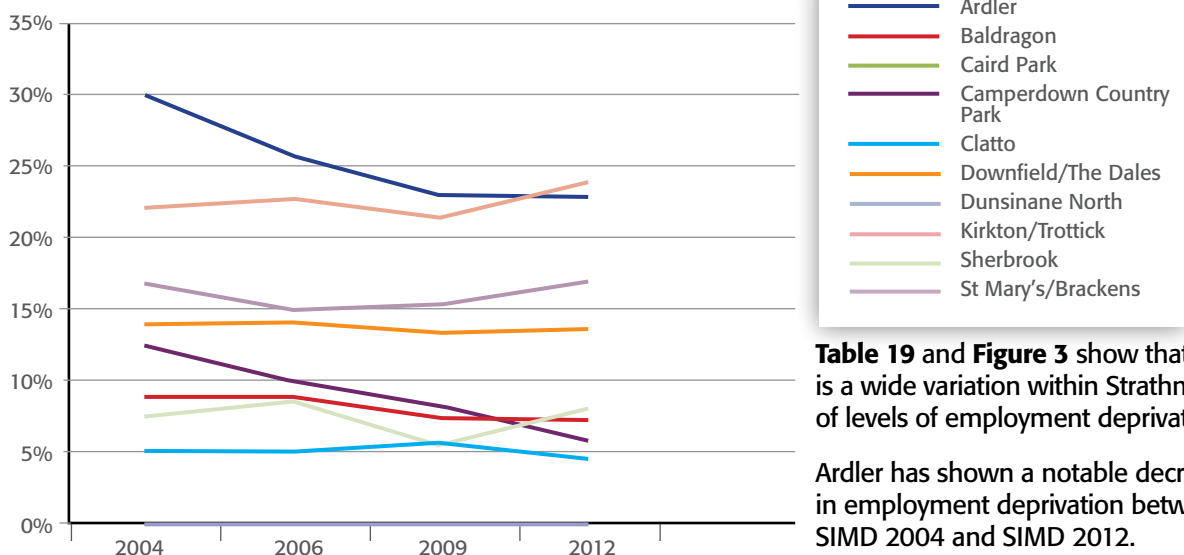


Table 19 and **Figure 3** show that there is a wide variation within Strathmartine of levels of employment deprivation.

Ardler has shown a notable decrease in employment deprivation between SIMD 2004 and SIMD 2012.

Scottish Neighbourhood Statistics – Income Statistics

To produce data for the Local Community Planning Partnership community areas, the Information and Research Team analyse data at data zone level. It was anticipated that SIMD data would be used to examine employability and income statistics. However the SIMD data guide states that due to confidentiality issues this data is only available for larger geographical areas.

The Scottish Neighbourhood Statistics (SNS) provides a wealth of resources and indicators that are available to download at data zone level. After approaching SNS to request each individual indicator used within the SIMD income and employment domain, SNS informed the Information and Research Team that they do not have these data sets. The income domains are created with data sets held by the Department for Work and Pensions and not all of these indicators will be made available for individual use. The SNS strongly advise Local Authorities and Community Planning Partnerships to use the 'Number of Income Deprived Persons' and the 'Number of Employment Deprived Persons' as robust indicators for profiling. **Table 20** shows which Income Domain Indicators are available for use within these profiles.

Table 20: List of SIMD Indicators and Indicators Used in this Analysis

SIMD Indicator	Used for this Analysis
Number of Adults (aged 16-59) receiving Income Support (Department for Work and Pensions (DWP) August 2008)	Total income support claimants
Number of Adults (aged 60 plus) receiving Guaranteed Pension Credit (DWP August 2008)	Total Pension Credit claimants
Number of Children (aged 0-15) dependant on a recipient of Income Support (DWP August 2007)	Not available (see below)
Number of Adults receiving (all) Job Seekers Allowance (DWP August 2008)	Total JSA claimants
Number of Children (aged 0-15) dependant on a recipient of Job Seekers Allowance (all) (DWP August 2007)	Not available (see below)

Note: The only data set similar to the two that are concerned with the number of children is "All children in families receiving Tax Credits", and there is only data from 2007 for this indicator.

11.1 Working Age Claiming Incapacity Benefits

An amalgamation of Severe Disability Allowance (SDA) and Incapacity Benefit (IB) data. Incapacity Benefit replaced Sickness and Invalidity Benefits in April 1995. It is paid to people who are assessed as being incapable of work and who meet the appropriate contribution conditions.

Table 21: % working age claiming incapacity benefits in SIMD 2004 to 2012

Community Area	2004	2006	2009	2012	% Change
Ardler	22%	20%	17%	16%	-5.2%
Baldragon	7%	8%	6%	6%	-1.1%
Caird Park	0%	0%	0%	0%	0.0%
Camperdown Country Pk	11%	10%	9%	6%	-4.9%
Clatto	8%	5%	4%	4%	-3.2%
Downfield/The Dales	11%	12%	11%	11%	-0.7%
Dunsinane North	0%	0%	0%	0%	0.0%
Kirkton/Trottick	16%	15%	15%	15%	-0.4%
Sherbrook	6%	7%	6%	5%	-1.1%
St. Mary's/Brackens	12%	12%	12%	12%	-0.6%
Strathmartine	13%	13%	12%	12%	-1.2%
DCC	12.1%	12.7%	11.7%	11.8%	-0.4%

Source: Scottish Neighbourhood Statistics

Figure 4: % working age claiming incapacity benefits in SIMD 2004 to 2012

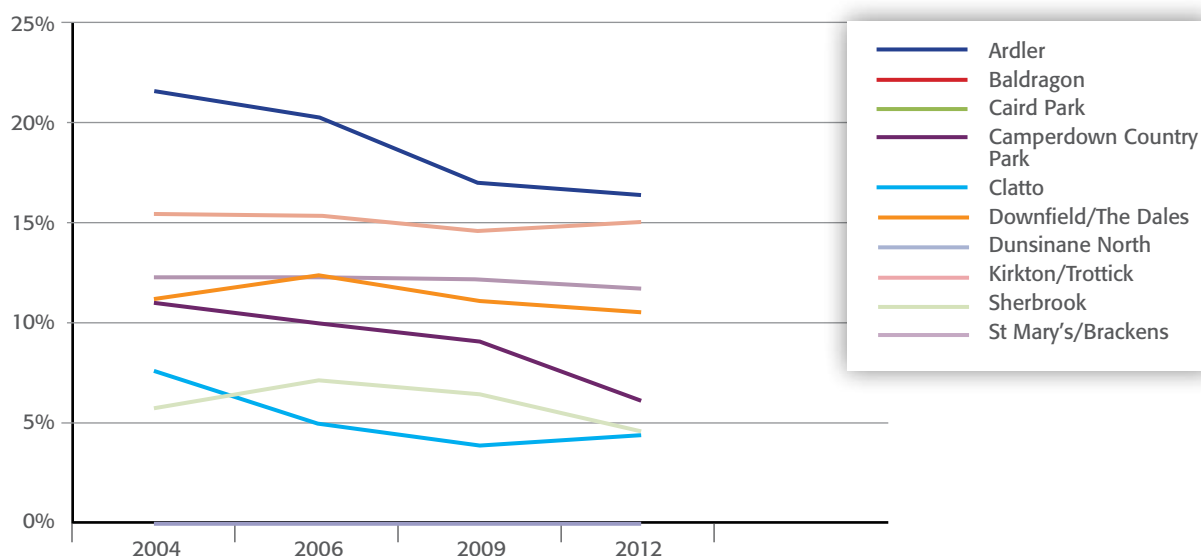


Table 21 and **Figure 4** show the differences in the percentage of working age people claiming incapacity benefit. Ardler remains the highest percentage even though it has seen a decrease between SIMD 2004 and 2012. There is a distinct gap between the highest and the lowest percentages within the Strathmartine LCPP.

11.2 Working Age Claiming Income Support

Income Support is awarded to people aged between 16 and the age at which they can claim Pension Credit, who are on a low income, who work less than 16 hours a week, and/or who are not required to be in full-time employment e.g. carers. Income Support that is paid because of an illness or disability is replaced by Employment Support Allowance (ESA) for new claimants from 27 October 2008.

Table 22: % Working age on Income Support in SIMD 2004 to 2012

Community Area	2004	2006	2009	2012	% Change
Ardler	35%	17%	15%	14%	-20.8%
Baldrigon	9%	2%	3%	2%	-7.2%
Caird Park	0%	0%	0%	0%	0.0%
Camperdown Country Pk	11%	0%	0%	0%	-11.1%
Clatto	3%	2%	1%	2%	-1.4%
Downfield/The Dales	12%	6%	6%	6%	-6.1%
Dunsinane North	0%	0%	0%	0%	0.0%
Kirkton/Trottick	22%	15%	14%	13%	-8.9%
Sherbrook	4%	2%	1%	1%	-2.7%
St. Mary's/Brackens	14%	8%	9%	8%	-6.3%
Strathmartine	17%	10%	10%	9%	-8.0%
DCC	17.7%	10.1%	12.1%	8.3%	-9.4%

Source: Scottish Neighbourhood Statistics

Figure 5: % Working age on Income Support in SIMD 2004 to 2012

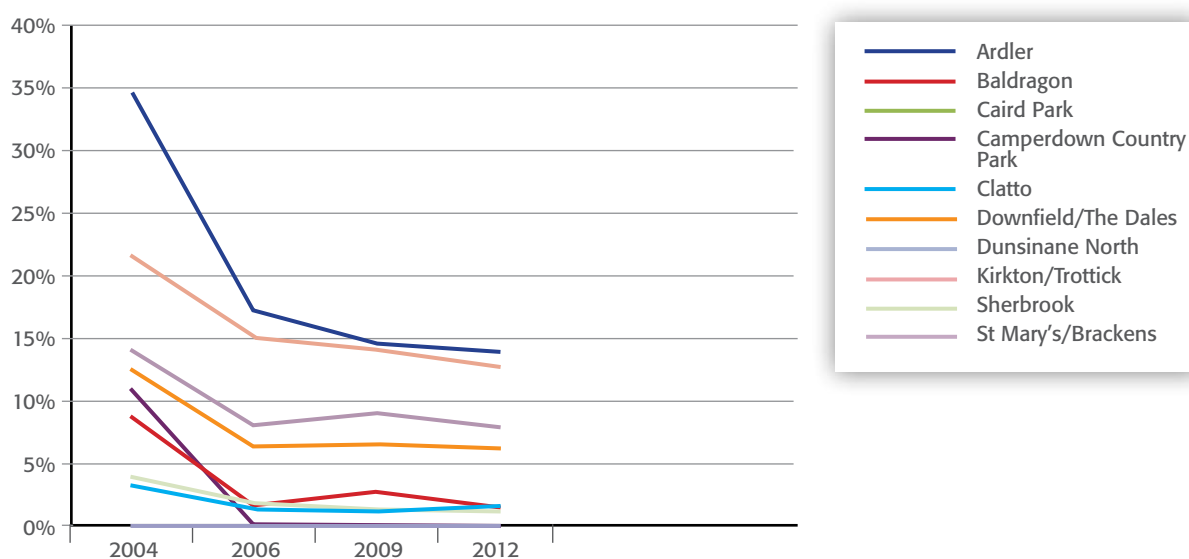


Table 22 and **Figure 5** show that all community areas have seen a decrease in the percentage of the working age population on income support between SIMD 2004 and 2012. The magnitude of these changes differs greatly between community areas.

11.3 Working Age Claiming JSA

JSA replaced Unemployment Benefit and Income Support for unemployed people in October 1996. It is payable to people under pensionable age who are available for, and actively seeking work with some exclusions. There are contribution-based and income-based routes of entry to JSA. Income-based JSA is similar to Income Support and the majority of JSA recipients are expected to qualify through this route.

Table 23: % Working Age Claiming JSA in SIMD 2004 to 2012

Community Area	2004	2006	2009	2012	% Change
Ardler	9%	6%	6%	7%	-2.3%
Baldrigon	3%	1%	2%	3%	0.0%
Caird Park	0%	0%	0%	0%	0.0%
Camperdown Country Pk	0%	0%	0%	0%	0.0%
Clatto	2%	2%	1%	1%	-0.9%
Downfield/The Dales	3%	2%	2%	5%	1.6%
Dunsinane North	0%	0%	0%	0%	0.0%
Kirkton/Trottick	6%	6%	6%	8%	1.6%
Sherbrook	1%	1%	1%	3%	1.3%
St. Mary's/Brackens	5%	3%	4%	5%	0.4%
Strathmartine	5%	4%	4%	6%	0.6%
DCC	5.3%	4.1%	4.0%	5.3%	-0.1%

Source: Scottish Neighbourhood Statistics

Figure 6: % Working Age Claiming JSA in SIMD 2004 to 2012

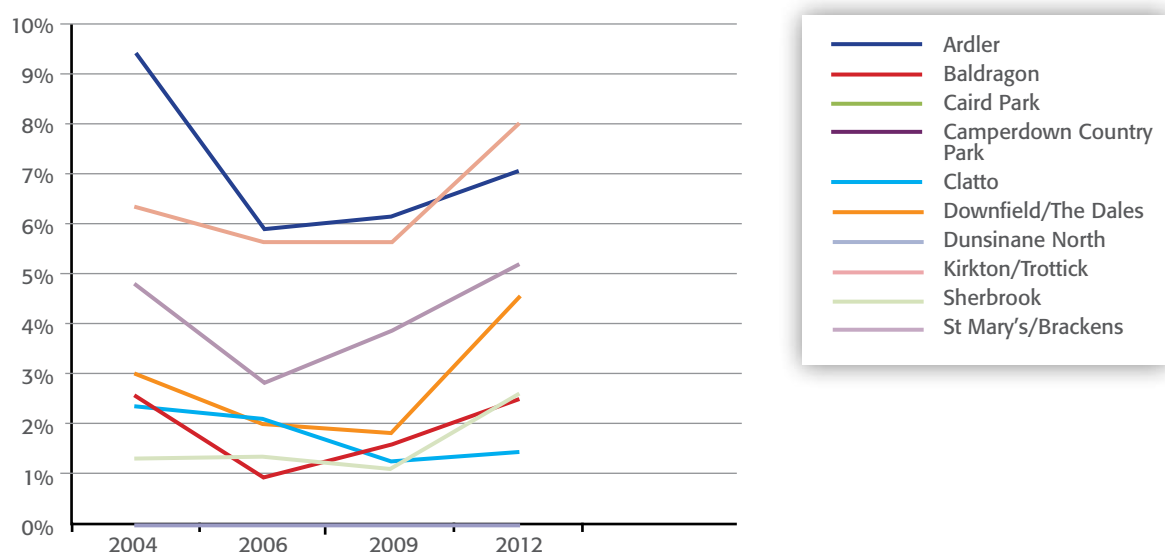


Table 23 and **Figure 6** show that in most cases JSA claimant counts can be seen to fall from between the SIMD 2004 and SIMD 2006 publications.

Between SIMD 2006 and 2012 the JSA claimant counts have proceeded to rise back to around initial levels.

11.4 Pensionable age receiving Pension Credits

Pension Credits provides financial help for people aged 60 or over whose income is below a certain level set by the law. The awarded amount will depend on other sources of income and extra amounts are added to the standard minimum for those who have: relevant housing costs; severe disabilities; or caring responsibilities.

Table 24: % Pensionable age receiving Pension Credits in SIMD 2004 to 2012

Community Area	2004	2006	2009	2012	% Change
Ardler	n/a	54%	53%	54%	-0.3%
Baldrigon	n/a	25%	24%	22%	-2.4%
Caird Park	n/a	0%	0%	0%	0.0%
Camperdown Country Pk	n/a	0%	0%	0%	0.0%
Clatto	n/a	17%	18%	11%	-5.4%
Downfield/The Dales	n/a	27%	28%	27%	0.0%
Dunsinane North	n/a	0%	0%	0%	0.0%
Kirkton/Trottick	n/a	46%	46%	45%	-0.9%
Sherbrook	n/a	10%	12%	13%	2.8%
St. Mary's/Brackens	n/a	26%	27%	26%	0.1%
Strathmartine	n/a	32%	33%	32%	0.0%
DCC	n/a	31.7%	33.0%	32.5%	0.9%

Source: Scottish Neighbourhood Statistics

Figure 7: % Pensionable age receiving Pension Credits in SIMD 2004 to 2012

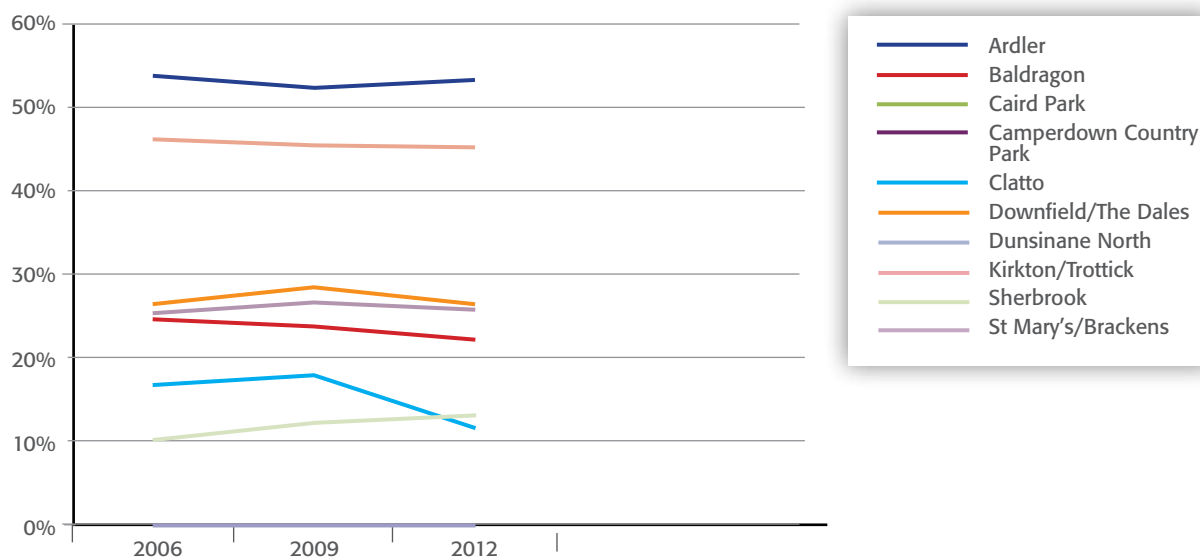


Table 24 and **Figure 7** show that the percentages have remained stable with Clatto community area showing a slightly larger decrease than the others.

11.5 Summary of Changes shown in Above Indicators

Table 25 summarises the nature of the changes that have been detailed in **Tables 21 to 24**. Where there has been a 'positive change' (a change that is desired – for example a reduction in working age population claiming JSA) this is indicated with a '1' and a green colour, the opposite being a '0' and an orange colour. The number of changes is totalled in the column at the far right of the table.

Table 25: Summary of Changes Experienced in Indicators within this Report

	Benefit Indicators			SIMD Indicators				Summary
	% Working age claiming incapacity benefits 2009	% Working age on Income Support 2009	% Working age claiming JSA 2009	% Pensionable age receiving Pension Credits 2004-2009	SIMD 15% IMD	% Population Income Deprived	% Working Age Population Employment Deprived	
Ardler	1	1	1	1	0	1	1	6
Baldragon	1	1	1	1	1	0	1	6
Caird Park	1	1	1	1	1	1	1	7
Camperdown Country Pk	1	1	1	1	1	0	1	6
Clatto	1	1	1	1	1	0	1	6
Downfield/ The Dales	1	1	0	0	0	1	1	4
Dunsinane North	1	1	1	1	1	1	1	7
Kirkton/Trottick	1	1	0	1	0	1	0	4
Sherbrook	1	1	0	0	1	0	0	3
St. Mary's/ Brackens	1	1	0	0	0	0	0	2
Strathmartine	1	1	0	1	0	1	1	5
DCC	1	1	1	0	0	1	1	5

Table 26 shows the percentage of the population for each Strathmartine community area that live in a data zone that is ranked within the 15% most deprived in Scotland within the SIMD Crime Domain. The SIMD crime domain does not include all types of crimes or offences recorded by the police. Certain crimes have been excluded because of data quality issues, or because they are less meaningful in terms of deprivation at a neighbourhood level.

For full description of the indicators and the Crime Domain itself use the following link:

<http://simd.scotland.gov.uk/publication-2012/technical-notes/domains-and-indicators/crime-domain/>

Table 26: % Population living in the 15% Most Deprived Data zones of the Crime Domain

Community Area	2004	2006	2009	2012	% Change
Ardler	n/a	40%	38%	39%	-1.7%
Baldrigon	n/a	0%	0%	0%	0.0%
Caird Park	n/a	0%	0%	0%	0.0%
Camperdown Country Pk	n/a	0%	0%	0%	0.0%
Clatto	n/a	0%	0%	0%	0.0%
Downfield/The Dales	n/a	3%	3%	4%	0.9%
Dunsinane North	n/a	0%	0%	0%	0.0%
Kirkton/Trottick	n/a	32%	15%	0%	-32.3%
Sherbrook	n/a	0%	0%	0%	0.0%
St. Mary's/Brackens	n/a	0%	0%	0%	0.0%
Strathmartine	n/a	14%	9%	11%	-3.0%
DCC	n/a	18%	17%	26%	8%

Source: Scottish Government



...you can do so much more **ONLINE** at...

dundee[city.gov.uk](http://dundee.gov.uk)

This information is made available in large print or in an alternative format that meets your needs.	
Chinese	欲知詳情，請致電：01382 435825
Russian	Более подробную информацию можно получить позвонив по телефону: 01382 435825
Urdu	مزید معلومات کے لئے براہ مہربانی 01382 435825 پر فون کریں۔
Polish	po dalszą informację zadzwoń pod numer 01382 435825
Alternative Formats	For further information please contact the issuer of this publication