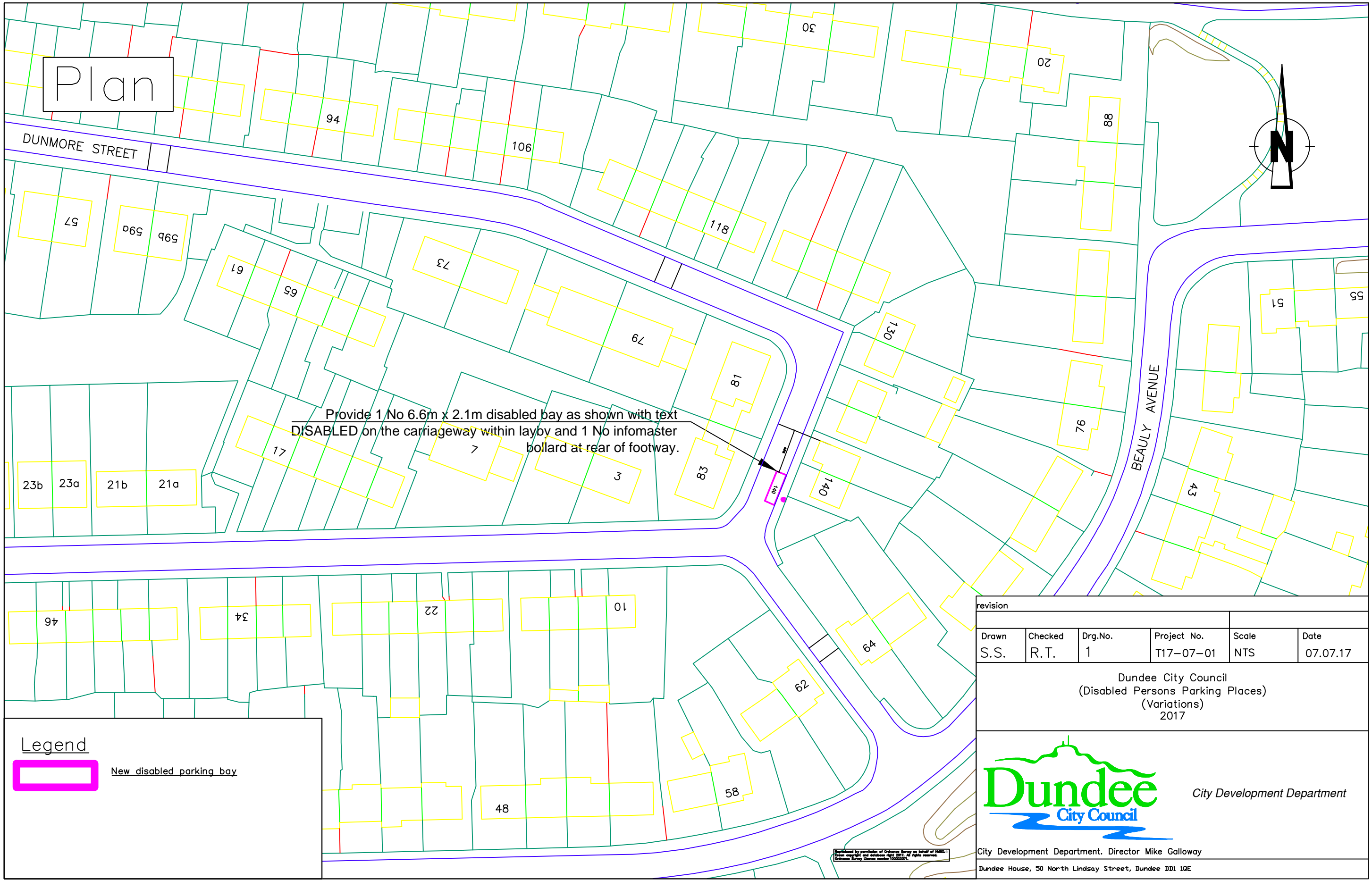
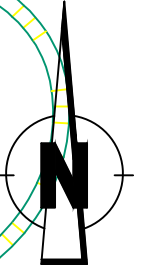



Plan



Provide 1 No 6.6m x 2.1m disabled bay as shown with text **DISABLED** on the carriageway within layby and 1 No infomaster bollard at rear of footway.

Legend
 New disabled parking bay

revision					
Drawn	Checked	Drg.No.	Project No.	Scale	Date
S.S.	R.T.	1	T17-07-01	NTS	07.07.17

Dundee City Council
 (Disabled Persons Parking Places)
 (Variations)
 2017

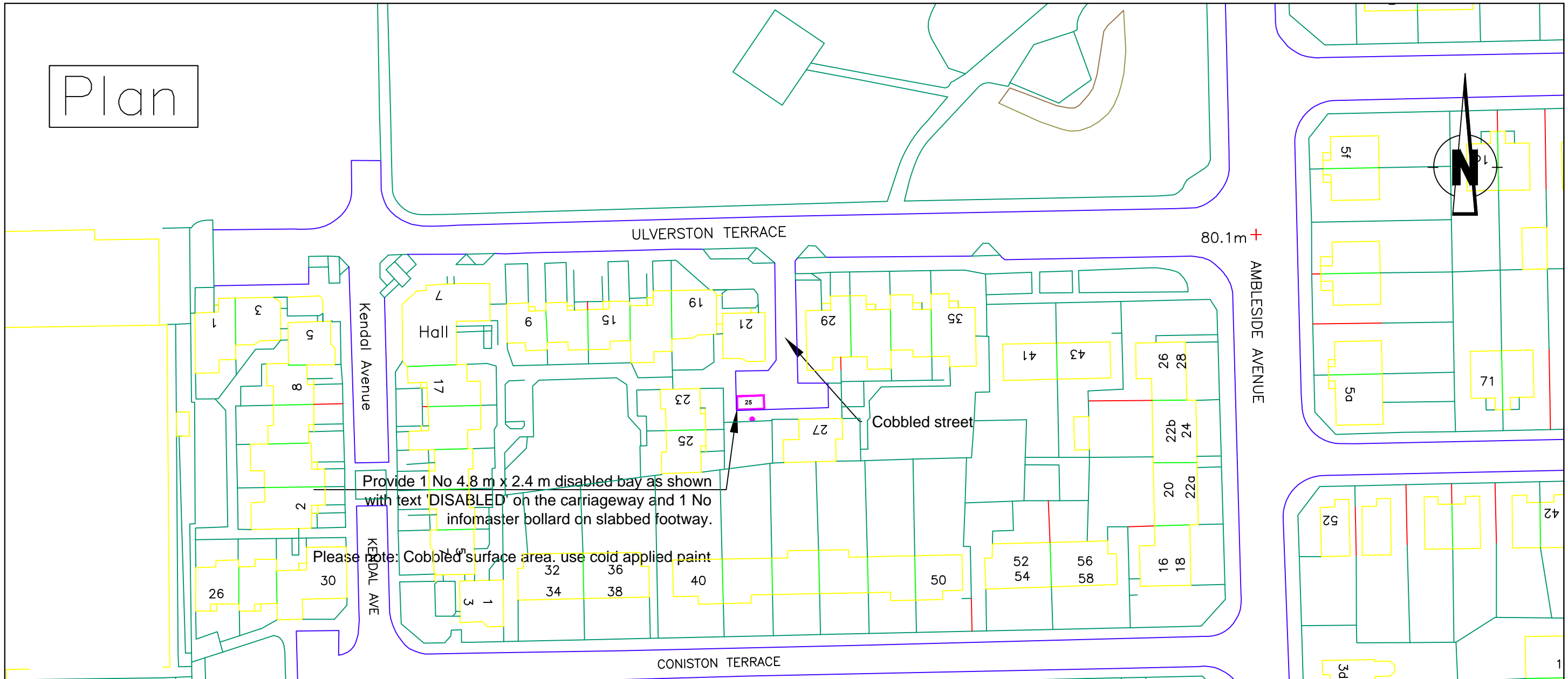
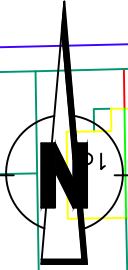


City Development Department

City Development Department, Director Mike Galloway
 Dundee House, 50 North Lindsay Street, Dundee DD1 1QE

Downloaded by permission of Ordnance Survey on behalf of 10250.
 Crown copyright and database right 2017. All rights reserved.
 Ordnance Survey License number 100023374.

Plan



Provide 1 No 4.8 m x 2.4 m disabled bay as shown with text 'DISABLED' on the carriageway and 1 No infomaster bollard on slabbed footway.

Please Note: Cobbled surface area, use cold applied paint

Legend

 New disabled parking bay

revision					
Drawn	Checked	Drg.No.	Project No.	Scale	Date
S.S.	R.T.	2	T17-07-01	NTS	07.07.17

Dundee City Council
(Disabled Persons Parking Places)
(Variations)
2017



City Development Department

City Development Department, Director Mike Galloway
Dundee House, 50 North Lindsay Street, Dundee DD1 1QE

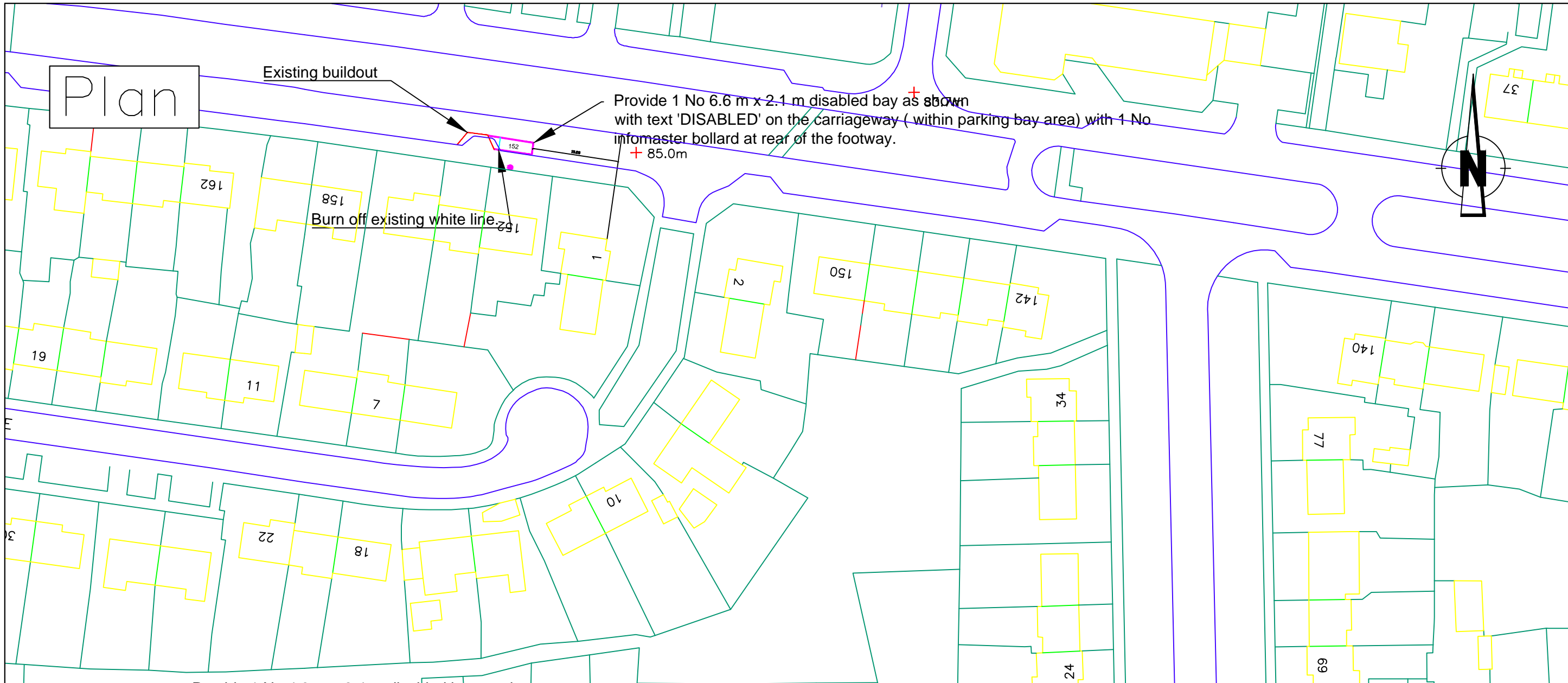
Prepared by permission of Ordnance Survey on behalf of HMRS. Crown copyright and database right 2017. All rights reserved. Ordnance Survey Licence number 100033776.

Plan

Existing buildout

Provide 1 No 6.6 m x 2.1 m disabled bay as shown with text 'DISABLED' on the carriageway (within parking bay area) with 1 No infomaster bollard at rear of the footway.
+ 85.0m

Burn off existing white line



Provide 1 No 4.8 m x 2.4 m disabled bay as shown with text 'DISABLED' within newly resurfaced parking area and 1 No infomaster bollard at rear of footpath.

Edging Kerb

Existing white line to be burnt off and area swept clean

parking area

Legend



New disabled parking bay

revision					
Drawn	Checked	Drg.No.	Project No.	Scale	Date
S.S.	R.T.	3	T17-07-01	NTS	07.07.17

Dundee City Council
(Disabled Persons Parking Places)
(Variations)
2017

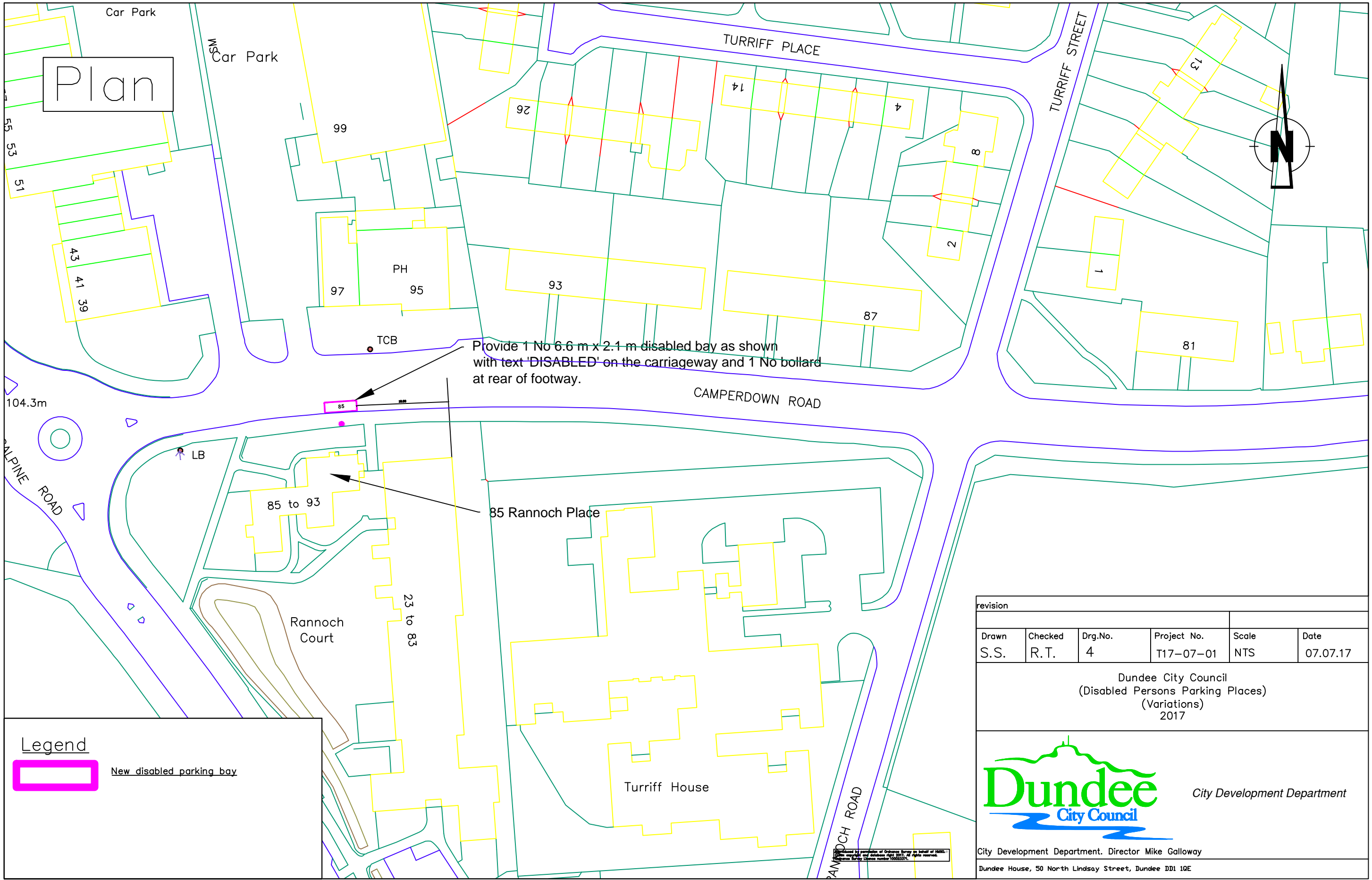


City Development Department

City Development Department, Director Mike Galloway

Dundee House, 50 North Lindsay Street, Dundee DD1 1QE

Produced by permission of Ordnance Survey on behalf of HM Government. Copyright © 2017. All rights reserved. Ordnance Survey Licence number 100033762.



Plan

Provide 1 No 6.6 m x 2.1 m disabled bay as shown with text 'DISABLED' on the carriageway and 1 No bollard at rear of footway.

Legend

 New disabled parking bay

revision					
Drawn	Checked	Drg.No.	Project No.	Scale	Date
S.S.	R.T.	4	T17-07-01	NTS	07.07.17

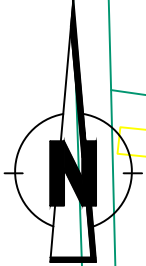
Dundee City Council
(Disabled Persons Parking Places)
(Variations)
2017

Dundee
City Council

City Development Department

City Development Department. Director Mike Galloway
Dundee House, 50 North Lindsay Street, Dundee DD1 1QE

BRACKENS



Plan

Clatto Moor

KINNEFF CRESCENT

GARVOCK PLACE

DRUMLITHIE PLACE

El Sub Sta

Burn off existing bay and uplift existing pollard sign (if present) to be taken to store for re-use.

Shelter

144.1m

Reproduced by permission of Ordnance Survey on behalf of HMRS. Crown copyright and database right 2017. All rights reserved.

revision					
Drawn	Checked	Drg.No.	Project No.	Scale	Date
S.S.	R.T.	5	T17-07-01	NTS	07.07.17

Dundee City Council
(Disabled Persons Parking Places)
(Variations)
2017



City Development Department

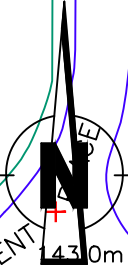
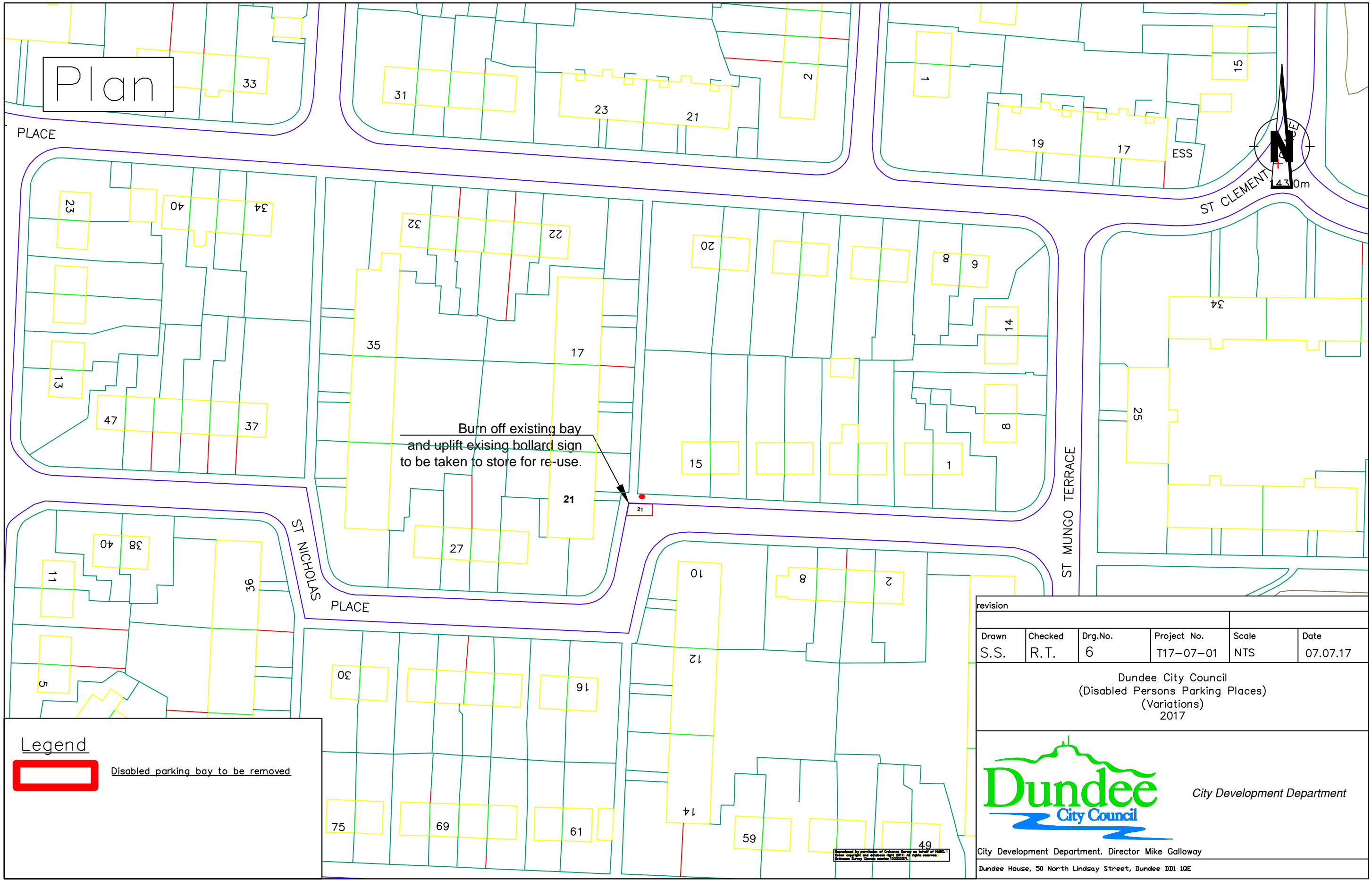
City Development Department, Director Mike Galloway
Dundee House, 50 North Lindsay Street, Dundee DD1 1QE

Legend



Disabled parking bay to be removed

Plan



PLACE

ST CLEMENT

ST NICHOLAS PLACE

ST MUNGO TERRACE

Burn off existing bay and uplift existing bollard sign to be taken to store for re-use.

Legend



Disabled parking bay to be removed

revision					
Drawn	Checked	Drg.No.	Project No.	Scale	Date
S.S.	R.T.	6	T17-07-01	NTS	07.07.17

Dundee City Council
(Disabled Persons Parking Places)
(Variations)
2017



City Development Department

City Development Department. Director Mike Galloway
Dundee House, 50 North Lindsay Street, Dundee DD1 1QE

Prepared by permission of Ordnance Survey on behalf of HMSO. Crown copyright and adjacent rights 2017. All rights reserved. Ordnance Survey Licence number 100033761

