



Dundee City Council

Council Budget for 2021/22



Message from the Leader of the Administration

This has been a year like no other and there is not a household in Dundee that has not been affected in some life changing way by the Covid-19 pandemic. While the vaccination programme offers us a way out, the economic impact of coronavirus will be felt by everyone for a long time.

Dundee City Council is one of the public bodies that has been delivering and continues to provide lifeline services to some of the most vulnerable people in our communities.

Everyone is facing major challenges and being asked to make whatever contribution they can, whether that be as a key worker, volunteer, staying at home to reduce the spread of the virus or by paying our contribution towards delivering essential council services at the time when they are needed most.

See the panel on the right for more information about how the Council has supported people during the pandemic.

Not to mention the continued day to day services provided by the council including waste collection, road maintenance, essential repairs, social care and education. This is only possible because of the way that local government is funded, including the contribution made by the Council Tax.

Dundee City Council agreed to freeze the Council Tax for 2021/2022, which starts on April 1, meaning a band D house will still pay £1,379.

The city's renewal over the last decade has brought investment and opportunity to every community in Dundee.

In addition, the council was instrumental in the creation of the Michelin Scotland Innovation Parc, Scotland's home for sustainable mobility which welcomed its first tenant this year. We are also investing more than £100 million in tackling the climate emergency, reducing our carbon footprint and boosting opportunities for active and sustainable travel.

This year the council's budget will also provide additional funding to support the work of the drug commission, mental health, poverty and climate change.

This coming year Dundee City Council will concentrate its efforts on building back better and making sure that our on-going, bold and ambitious plans continue to meet your needs, hopes and aspirations.



Councillor John Alexander,
Leader of Dundee City Council

£2.9m

awarded in Discretionary Housing Payments



Equivalent of

3million

meals provided



5,406

children benefited from child winter payments



450

deliveries of free period products



4,827

Crisis Grants awarded



981

Community Care Grants allocated



Over **£1.1m**

in Scottish Welfare Fund grants



£319,000

of support to Council tenants facing hardship



£1.3m

in Free School Meals funding



How to Contact Us:



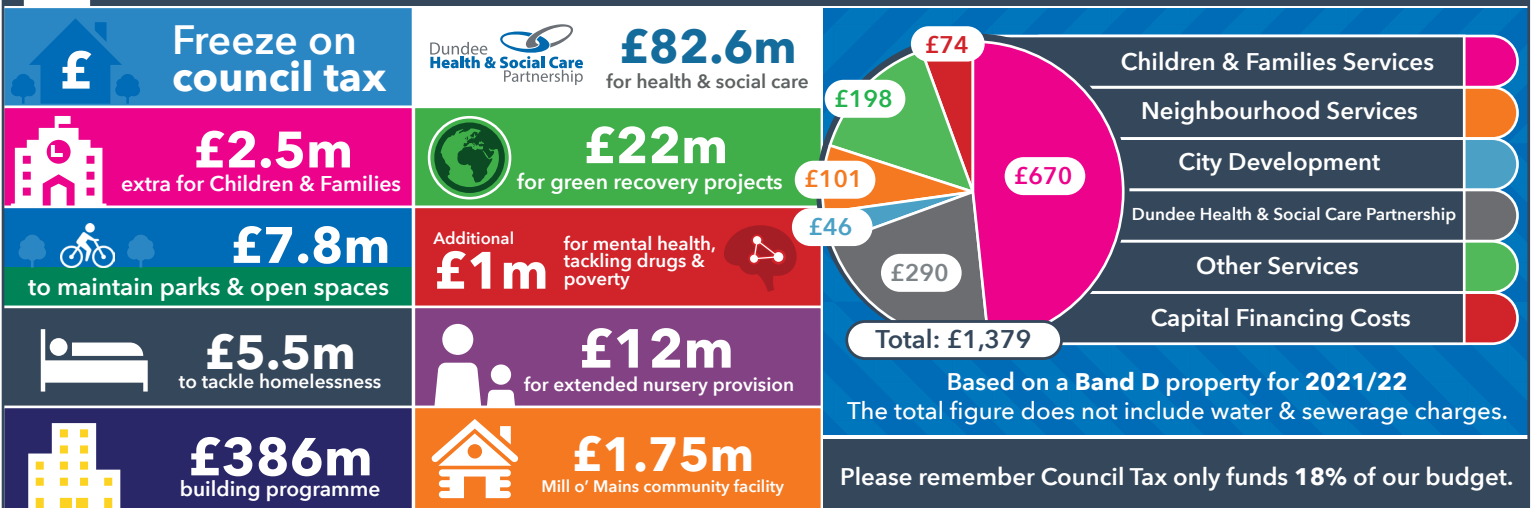
- www.dundeecc.gov.uk
- customerservices@dundeecc.gov.uk
- (01382) 434 000**
- Customer Services Team,
Dundee House - 50 North Lindsay Street
Dundee, DD1 1QE
- 24 Hours Automated Payment Line
0845 6026943
- Visit contactscotland-bsl.org to connect to an online interpreter using the Video Relay Service (VRS)

Social Media

- [/officialdundeecc](https://www.facebook.com/officialdundeecc)
- [@DundeeCouncil](https://twitter.com/DundeeCouncil)
- [@DundeeCityCouncil](https://www.instagram.com/DundeeCityCouncil)
- [Dundee City Council](https://www.linkedin.com/company/Dundee-City-Council)

More contacts available on our website
www.dundeecc.gov.uk/contact-us

How your Council Tax is spent...



£ Freeze on council tax

£82.6m for health & social care
Dundee Health & Social Care Partnership

£2.5m extra for Children & Families

£22m for green recovery projects

£7.8m to maintain parks & open spaces

£1m Additional for mental health, tackling drugs & poverty

£5.5m to tackle homelessness

£12m for extended nursery provision

£386m building programme

£1.75m Mill o' Mains community facility

What we spend our revenue budget on and how this is funded



	Total Gross Budgeted Expenditure	Fees, Charges and Other Income	Total Net Budgeted Expenditure	Change from Previous Year	% Change from Previous Year	Band D Council Tax Equivalent
--	----------------------------------	--------------------------------	--------------------------------	---------------------------	-----------------------------	-------------------------------

Budget / Service	£m	£m	£m	£m	%	£
Children & Families Services	197.236	(6.099)	191.137	2.495	1.3	3,783.23
Budgets delegated to Dundee Health & Social Care Partnership	115.311	(32.719)	82.592	2.517	3.1	1,634.77
City Development	43.953	(30.934)	13.019	1.391	12.0	257.69
Neighbourhood Services	60.488	(31.719)	28.769	(0.102)	(0.4)	569.44
Other Services	169.433	(112.602)	56.831	1.631	3.0	1,124.88
Capital Financing Costs	<u>21.451</u>	<u>(0.250)</u>	<u>21.201</u>	<u>0.165</u>	<u>0.8</u>	<u>419.64</u>
Total	<u>607.872</u>	<u>(214.323)</u>	<u>393.549</u>	<u>8.097</u>	<u>2.1</u>	<u>7,789.65</u>

Financed By

(a) Government Grants			290.116	23.453	8.8	5,742.37
(b) Non-Domestic Rates			<u>33.763</u>	<u>(15.356)</u>	<u>(31.3)</u>	<u>668.28</u>
Total Amount to be raised from Council Tax			<u>69.670</u>	<u>(0.000)</u>	<u>(0.0)</u>	<u>1,379.00</u>

The agreed Council Tax levels for 2021/22 are as follows:

	Proportion Of Band D	Charge £
Band A	240/360	919.33
Band B	280/360	1,072.56
Band C	320/360	1,225.78
Band D	360/360	1,379.00
Band E	473/360	1,811.85
Band F	585/360	2,240.88
Band G	705/360	2,700.54
Band H	882/360	3,378.55

Council tax is set based on a **Band D** property and the charge for other properties is calculated from this.

Scottish Average Comparative **Band D** Council Tax for 2020/2021

£1,308

Comparison of Budgeted Spend Against Government Provision

	£ per Band D Dwelling
Expenditure figure used by Government in grant support calculations:	£7,224.46
Proposed expenditure by authority on comparable basis:	£7,363.11



How many staff we employ

Budgeted full-time equivalent 2020/21	6,034
Budgeted full-time equivalent 2021/22	5,951
Decrease in full-time equivalents	(83)



www.dundee.gov.uk

