

---

# Dundee Poverty Profile 2020

---



## Dundee City Poverty Profile

The following outlines key statistics in relation to poverty across Dundee, where possible data has been used from national sources to allow benchmarking with Scotland overall. If national data is not available local data has been used which is collected annually to allow for future monitoring and evaluation. The local context around general deprivation in the city has been outlined followed by data with particular focus on child poverty, this data is based on key drivers of child poverty outlined in the guidance document provided by the Scottish Government in relation to development of The Child Poverty Scotland Act 2017.

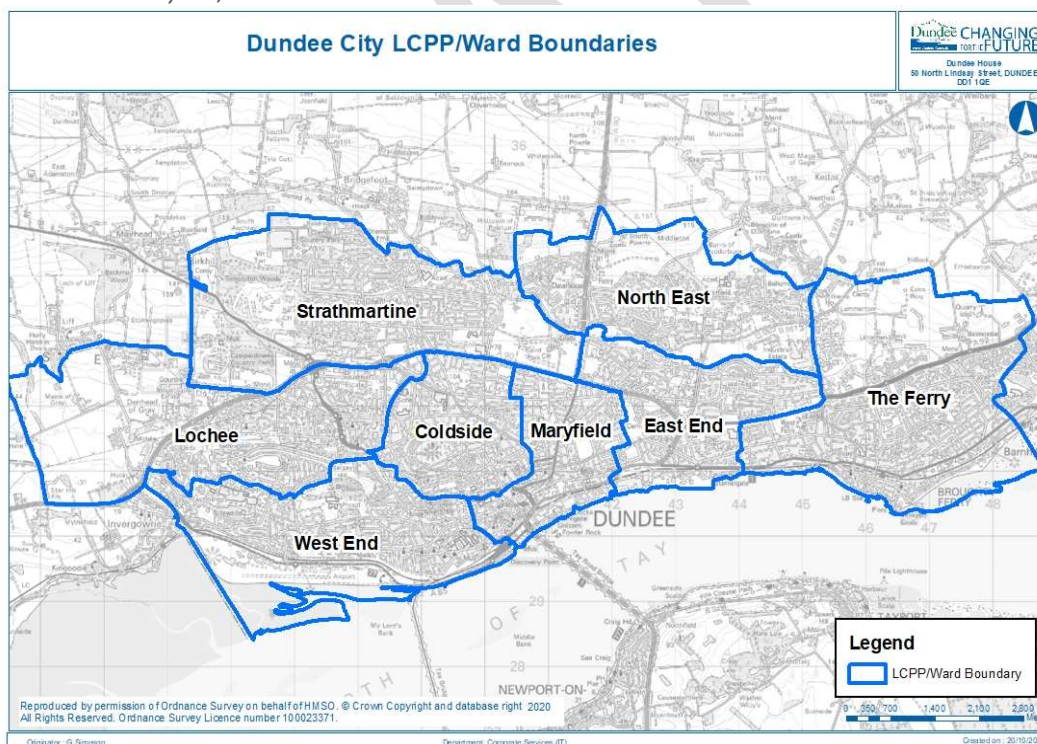
### Local Context

Dundee is Scotland's fourth largest city and is situated on the north coast of the mouth of the Tay Estuary. The most recent estimate of Dundee's population is 149,320 (National Records of Scotland (NRS) 2019 Mid-year population estimate). Dundee has a sizeable student population, and is home to the University of Dundee, Abertay University and Dundee & Angus College. The Dundee City Council area covers 60 square kilometres and is, geographically, the smallest local authority area in Scotland. It is bordered by Perth and Kinross Council to the west and Angus Council to the north and east.

Dundee City is split into 8 LCPP/Wards these are namely

- Coldside
- East End
- Lochee
- Maryfield
- North East
- Strathmartine
- The Ferry
- West End

Figure 1: Dundee City LCPP/Ward Boundaries



### Mid-Year Population Estimates

Table 1: Dundee City 2019 Mid-Year Population Estimates

Age Group	Dundee City	Dundee City %	Scotland	Scotland %
0-15 Years	24,044	16.1%	921,397	16.9%
16-24 Years	20,881	14.0%	573,722	10.5%
25-44 Years	42,728	28.6%	1,423,672	26.1%

**DRAFT**

45-64 Years	35,600	23.8%	1,500,364	27.5%
65-74 Years	13,799	9.2%	578,300	10.6%
75+ Years	12,268	8.2%	465,845	8.5%
<b>Total</b>	<b>149,320</b>	<b>100.0%</b>	<b>5,463,300</b>	<b>100.0%</b>

Source: National Records of Scotland, 2019 Mid-Year Population Estimate

It is estimated that there are 24,044 children aged 0-15 years in Dundee City accounting for 16.1% of the overall Dundee City population. This proportion is slightly lower than the Scottish proportion which stands at 16.9%.

The following table shows the Dundee City 2019 Mid-Year population broken down to ward level. The table shows the number of individuals in each group as well as the percentage of the overall ward total.

Table 2: Dundee City 2019 Mid-Year Population Estimates – Ward Breakdown

Ward	0-15 Years	16-24 Years	25-44 Years	45-64 Years	65-74 Years	75+ Years	Total
Coldside	2,244 (12.3%)	2,390 (13.1%)	5,727 (31.3%)	4,340 (23.8%)	1,825 (10.0%)	1,746 (9.6%)	18,272
East End	3,199 (20.3%)	1,496 (9.5%)	4,377 (27.7%)	3,823 (24.2%)	1,597 (10.1%)	1,284 (8.1%)	15,776
Lochee	3,755 (19.0%)	1,779 (9.0%)	5,913 (29.9%)	4,892 (24.8%)	1,744 (8.8%)	1,671 (8.5%)	19,754
Maryfield	2,135 (11.5%)	3,648 (19.6%)	6,537 (35.2%)	3,882 (20.9%)	1,291 (6.9%)	1,098 (5.9%)	18,591
North East	3,590 (22.3%)	1,594 (9.9%)	4,609 (28.6%)	4,087 (25.3%)	1,410 (8.7%)	844 (5.2%)	16,134
Strathmartine	3,942 (20.0%)	1,756 (8.9%)	5,178 (26.3%)	5,238 (26.6%)	2,007 (10.2%)	1,585 (8.0%)	19,706
The Ferry	3,040 (15.1%)	1,428 (7.1%)	4,552 (22.6%)	5,681 (28.3%)	2,587 (12.9%)	2,810 (14.0%)	20,098
West End	2,139 (10.2%)	6,790 (32.4%)	5,835 (27.8%)	3,657 (17.4%)	1,338 (6.4%)	1,230 (5.9%)	20,989

Source: National Records of Scotland, Electoral Ward Population Estimates (2011 Data Zone based) – 2019 Estimated population by sex and single year of age

Of the estimated 24,044 children aged 0-15 years living in Dundee City:

- 2,244 (9.3%) lived in Coldside
- 3,199 (13.3%) lived in East End
- 3,755 (15.6%) lived in Lochee
- 2,135 (8.9%) lived in Maryfield
- 3,590 (14.9%) lived in North East
- 3,942 (16.4%) lived in Strathmartine
- 3,040 (12.6%) lived in The Ferry
- 2,139(8.9%) lived in West End

## **Births**

There were 1,416 births in Dundee City in 2019 of these 4.6% were births where the mother was aged under 0- 19 years.

Table 3: Dundee City Births by Age Group of Mother

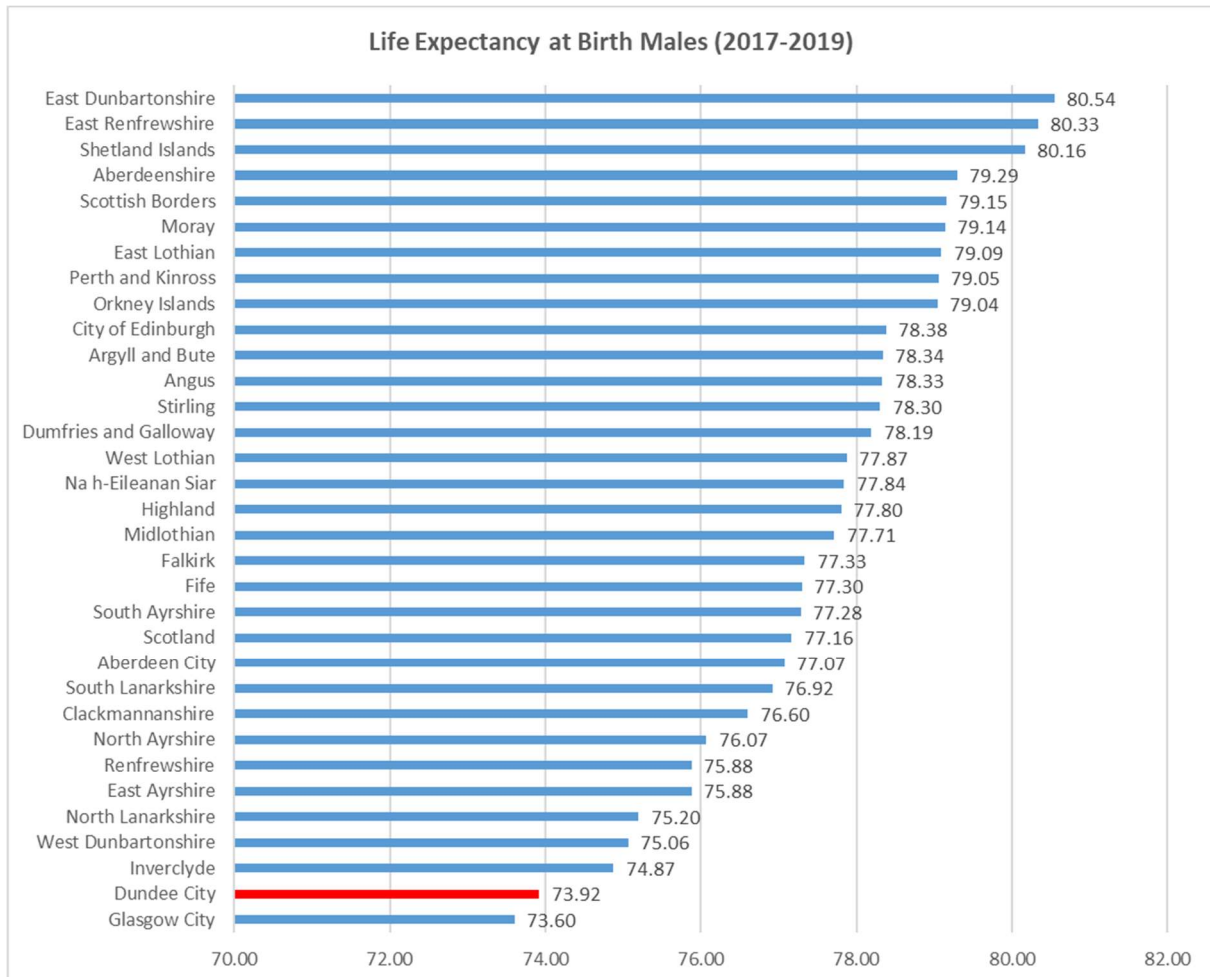
Age Group of Mother	Year 2019	Percentage
0-19	65	4.6%
20-24	250	17.6%
25-29	397	28.0%
30-34	407	28.7%
35-39	247	17.4%
40 and Over	51	3.6%

Source: National Records of Scotland – Birth Time Series Data

## Life Expectancy

Dundee City has a male life expectancy at birth of 73.92 years. This is the second lowest when compared all of the local authorities in Scotland with Glasgow City reporting a lower life expectancy at 73.6 years. The life expectancy at birth for males in Dundee City is 3.24 years lower than the overall Scottish male life expectancy at birth which is 77.16 years.

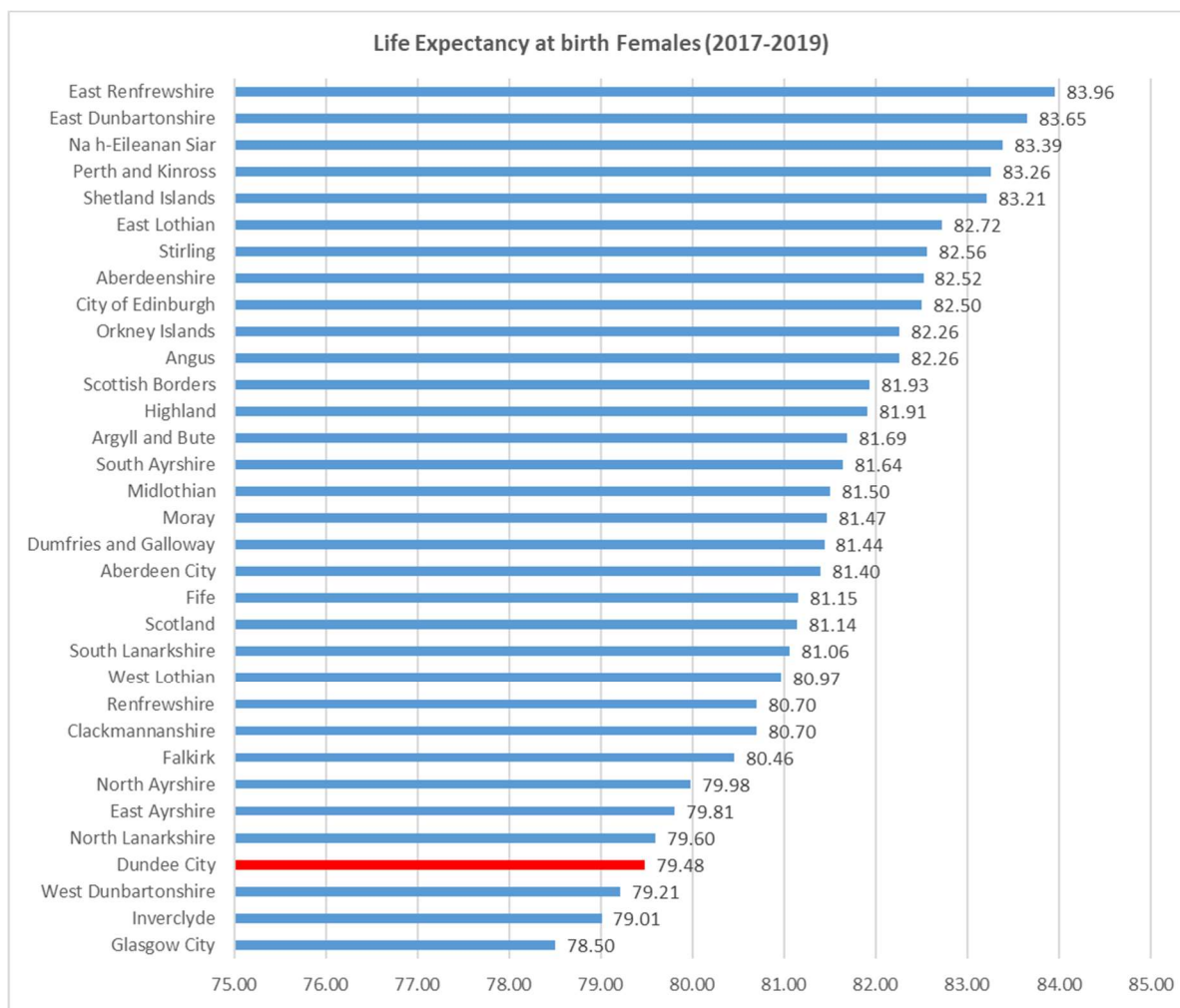
Figure 2: Life Expectancy at Birth 2017-19 – Males



Source: National Records of Scotland – Life Expectancy for Administrative Areas Within Scotland 2017-2019

Dundee City has a female life expectancy at birth of 79.48 years. When compared to all 32 Local Authorities in Scotland, the life expectancy for females at birth in Dundee City is the fourth lowest in Scotland with Glasgow City reporting the lowest life expectancy at birth for females for the period 2017-19 (78.50 years) followed by Inverclyde (79.01 years) and West Dunbartonshire (79.21 years). The life expectancy at birth for a female in Dundee City is 1.66 years lower than the Scottish female life expectancy at birth which is 81.14 years. This is shown in the chart below

Figure 3: Life Expectancy at Birth 2017-2019 - Females



Source: National Records of Scotland – Life Expectancy for Administrative Areas Within Scotland 2017-2019

6% of Dundee’s population are from non-white minority ethnic groups, this is slightly higher than the Scottish overall figure of 4.4%.

Table 4: Scottish Census 2011 – Non-White Minority Ethnic Groups

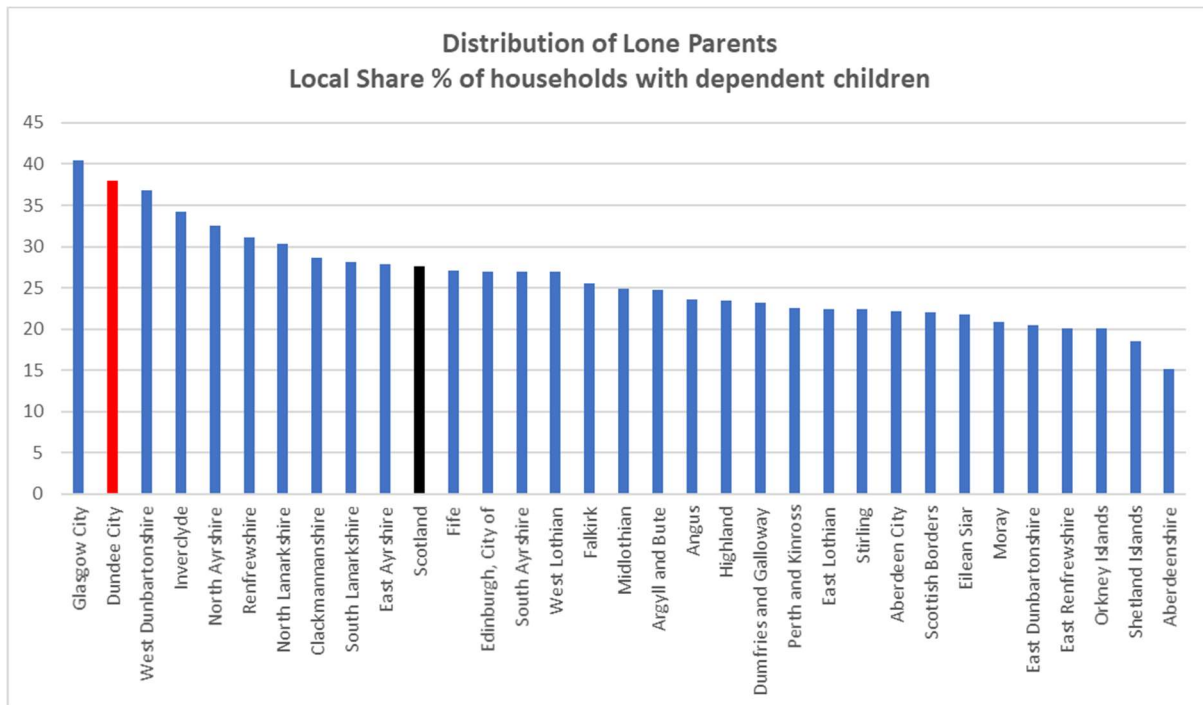
	Dundee City	Scotland
Non-white minority ethnic group	6.0%	4.4%

Source: Scottish Census 2011

### Lone Parents

The 2011 Scottish Census produced figures on lone parents including the local share (%) of all households with dependent children. This figure was 38% in Dundee City, which was the second highest in Scotland, with Glasgow reporting a higher percentage of 40%. At a Scottish level the percentage was 27.6%. Figures for all local authorities as well as Scotland overall are shown in the chart below:

Figure 4: Distribution of Lone Parents – Local share % of households with dependent children



Source: Scottish Census 2011

## Scottish Index of Multiple Deprivation 2020

The Scottish Index of Multiple Deprivation (SIMD) is the official tool for finding the most deprived areas in Scotland. The 2020 SIMD was originally published on 28th January 2020, however due to an error identified with some DWP data used to build the SIMD, the Scottish Government re-published a revised version in June 2020.

The SIMD splits Scotland into 6,976 small areas, called 'data zones', with roughly equal populations. The Scottish Government look at indicators to measure the different sides of deprivation in each data zone, like pupil performance, travel times to the GP, crime, unemployment and many others indicators, 34 in total.

These 34 indicators of deprivation are grouped into 7 types, called 'domains'. The 7 domains (income; employment; health; education, geographic access to services; crime; and housing) are combined into one index – the SIMD, ranking each data zone in Scotland from 1 (most deprived) to 6,976 (least deprived). Focusing on small areas shows the different issues there are in each neighbourhood. These could be poor housing conditions, a lack of skills or good education, or poor public transport.

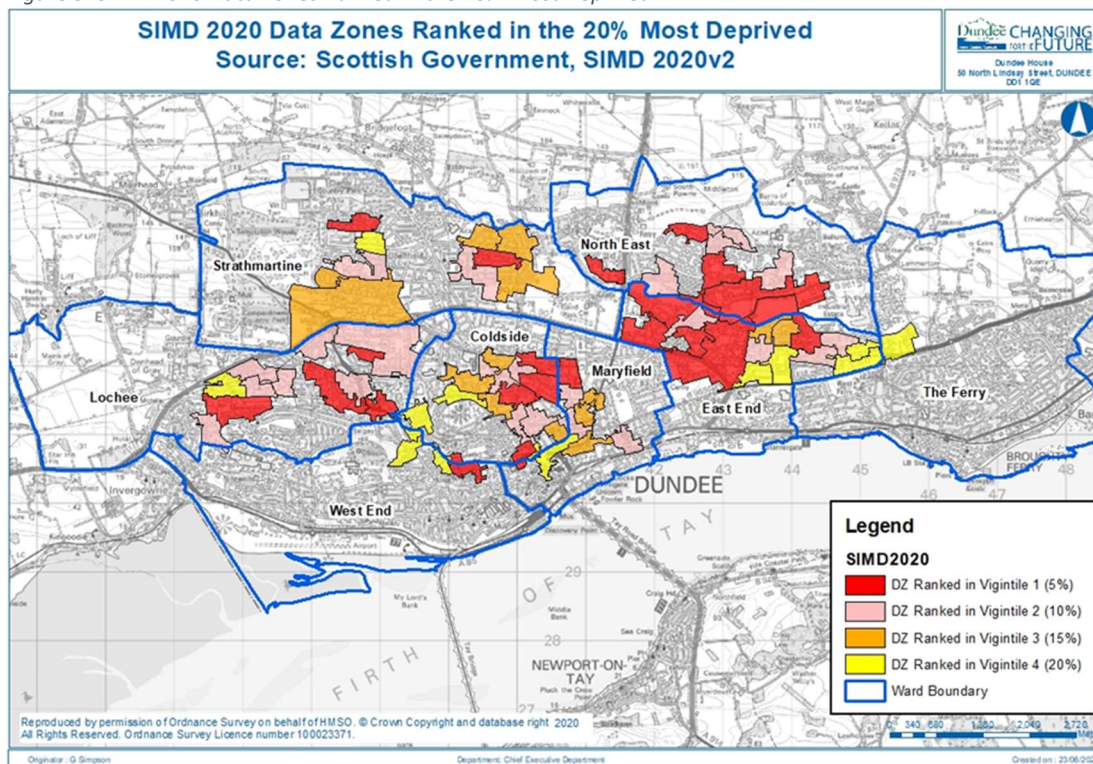
The Scottish Government uses 20% as a marker for the "Most Deprived" however they also state that those living in areas up to 40% most deprived may also experience difficulties. The 2020 SIMD reported that 70 of Dundee's 188 data zones were ranked in the 20% most deprived in Scotland.

### Dundee City data zones ranked in the most deprived areas in Scotland

Dundee City is split into 188 data zones and the SIMD 2020 reported that the population in Dundee City was 148,710. The Scottish Government used the 2017 National Records of Scotland small area population estimates for their SIMD calculations.

The SIMD 2020 reported that **54,497 (36.6%)** people in Dundee City live in a data zone ranked within the 20% most deprived. This compares to **53,435 (36.0%)** in SIMD 2016. The SIMD reported that 70 of Dundee City's 188 data zones were ranked in the 20% most deprived in Scotland. This has increased by 1 when compared to the 2016 SIMD. The map below shows the location of the data zones in Dundee City ranked in the 20% Most Deprived.

Figure 5: SIMD 2020 Data Zones Ranked in the 20% Most Deprived



The following table shows the population living in each LCPP/Ward and the breakdown of people who live in data zones ranked in the 20% most deprived.

Table 5: LCPP/Ward – Population living in data zones ranked in the 20% most deprived in the SIMD 2020

LCPP/Ward	Total Population	Total Working Age Population	No. of data zones within 20% MD	Population within 20% MD	%	Working Age Population in 20% MD	% Population who live in 20% MD who are of working age
Coldside	18,366	12,426	14	11,192	<b>60.9</b>	7,595	<b>67.9</b>
East End	15,870	9,742	15	11,356	<b>71.6</b>	7,035	<b>61.9</b>
Lochee	19,439	12,319	12	9,599	<b>49.4</b>	6,211	<b>64.7</b>
Maryfield	18,610	14,026	8	6,789	<b>36.5</b>	5,270	<b>77.6</b>
North East	15,987	10,282	8	5,459	<b>34.1</b>	3,378	<b>61.9</b>
Strathmartine	19,684	12,201	10	8,030	<b>40.8</b>	4,914	<b>61.2</b>
The Ferry	20,174	11,770	0	0	<b>0.0</b>	0	<b>0.0</b>
West End	20,580	16,004	3	2,072	<b>10.1</b>	1,559	<b>75.2</b>
<b>Total Dundee</b>	<b>148,710</b>	<b>98,770</b>	<b>70</b>	<b>54,497</b>	<b>36.6</b>	<b>35,962</b>	<b>66.0</b>

Source: Scottish Government, SIMD 2020

**DRAFT**

The above table shows that seven of the eight LCPP/Wards in Dundee City contain data zones ranked in the 20% most deprived. East End (71.6%) and Coldside (60.9%) are the LCPP/Wards within Dundee City which have the greatest proportion of their respective populations living in data zones ranked in the 20% most deprived.

### **Child Population (aged 0 to 15) in most deprived data zones by Ward/LCPP**

The 2020 SIMD reported that 10,506 children (aged 0-15 years) live within the 20% most deprived data zones, this accounts for 43.8% of children in that age group in Dundee City overall. This is consistent with figure reported in the 2016 SIMD of 10,413 (43.8%).

*Table 6: Child (0-15) population within 5% and 20% most deprived*

<b>Ward/LCPP</b>	<b>Total Aged 0-15</b>	<b>0-15 within 5%</b>	<b>%</b>	<b>0-15 within 20%</b>	<b>%</b>
Coldside	2,326	519	22.3	1,495	64.3
East End	3,274	1,110	33.9	2,611	79.7
Lochee	3,647	660	18.1	2,003	54.9
Maryfield	2,190	130	5.9	802	36.6
North East	3,502	670	19.1	1,375	39.3
Strathmartine	3,939	480	12.2	1,901	48.3
The Ferry	3,051	0	0.0	0	0.0
West End	2,069	55	2.7	319	15.4
<b>Total</b>	<b>23,998</b>	<b>3,624</b>	<b>15.1</b>	<b>10,506</b>	<b>43.8</b>

Source: Scottish Government, SIMD 2020

The Ferry is the only LCPP/Ward in Dundee City where 0% of children (0-15 years) live in a data zone ranked in the 20% most deprived. The majority of children (0-15 years) who live in East End (79.7%), Coldside (64.3%) and Lochee (54.9%) live in a data zone ranked in the 20% most deprived.

*Table 7: Comparison of child population within the 5% and 20% most deprived – SIMD 2016 and 2020*

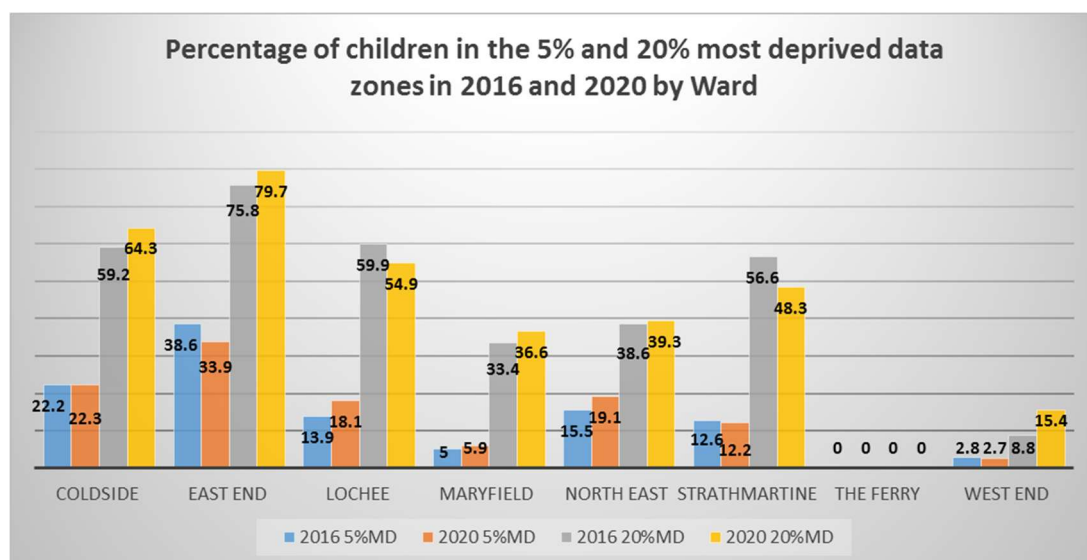
<b>Ward/LCPP</b>	<b>2016</b>	<b>2020</b>	<b>2016</b>	<b>2020</b>
	<b>5%</b>	<b>5%</b>	<b>20%</b>	<b>20%</b>
<b>Coldside</b>	22.2	22.3	59.2	64.3
<b>East End</b>	38.6	33.9	75.8	79.7
<b>Lochee</b>	13.9	18.1	59.9	54.9
<b>Maryfield</b>	5.0	5.9	33.4	36.6
<b>North East</b>	15.5	19.1	38.6	39.3
<b>Strathmartine</b>	12.6	12.2	56.6	48.3
<b>The Ferry</b>	0.0	0.0	0.0	0.0
<b>West End</b>	2.8	2.7	8.8	15.4

Source: Scottish Government, SIMD 2016 and 2020

When comparing the SIMD 2016 and 2020 five of the LCPP/Wards in Dundee City namely Coldside, East End, Maryfield, North East and West End experienced increases in the percentage of children aged 0-15 years living in data zones ranked in the 20% most deprived.



Figure 6: Percentage of children in the 5% and 20% most deprived data zones in 2016 and 2020 by Ward



Source: Scottish Government, SIMD 2016 and 2020

### **SIMD 2020 Education Domain**

Table 8: Children (0-15 years) living in data zones ranked in the 20% most deprived in the Education Domain

LCPP/Ward	Population 0-15yrs	Children 0-15yrs living in data zones ranked in the 20% most deprived in the Education Domain	Children 0-15yrs living in data zones ranked in the 20% most deprived in the Education Domain
Coldside	2,326	1,226	52.7%
East End	3,274	2,346	71.7%
Lochee	3,647	2,367	64.9%
Maryfield	2,190	849	38.8%
North East	3,502	2,215	63.2%
Strathmartine	3,939	1,753	44.5%
The Ferry	3,051	0	0.0%
West End	2,069	592	28.6%
<b>Total Dundee</b>	<b>23,998</b>	<b>11,348</b>	<b>47.3%</b>

Source: Scottish Government, SIMD 2020

The 2020 SIMD reported that 11,348 children aged 0-15 years or 47.3% of all children in this age group in Dundee City live in a data zone ranked in the 20% most deprived in the education domain. The percentage varies across the LCPP/Wards in the city from 71.7% of all children in East End to 0% of children in The Ferry.

### **SIMD 2020 – Employment Domain**

The employment domain in the Scottish Index of Multiple Deprivation examines unemployment claimant counts averaged over 12 months, working age incapacity benefit or employment support allowance recipients and working age severe disablement allowance recipients.

Table 9: SIMD 2020 – Percentage of working age population who live in a data zone ranked in the 20% most deprived in the Employment Domain

LCPP/Ward	Working Age Population	Working Age Population living in data zones ranked in 20% Most Deprived in Employment Domain	Working Age Population living in data zones ranked in 20% Most Deprived in Employment Domain
Coldside	12,426	7,595	61.1%
East End	9,742	6,782	69.6%
Lochee	12,319	7,118	57.8%
Maryfield	14,026	4,416	31.5%
North East	10,282	3,378	32.9%
Strathmartine	12,201	4,503	36.9%
The Ferry	11,770	624	5.3%
West End	16,004	1,559	9.7%
<b>Total Dundee</b>	<b>98,770</b>	<b>35,975</b>	<b>36.4%</b>

Source: Scottish Government, SIMD 2020

The SIMD reported that 35,975 people or 36.4% of the working age population in Dundee City live in a data zone that is ranked in the 20% most deprived in the employment domain. The percentage of the working age population living in data zones ranked in the 20% most deprived in the employment domain varies significantly across the LCPP/Wards in Dundee City from 60% and over in in East End (69.6%), Coldside (61.1%) and Lochee (57.8%) to around 5% in The Ferry.

The Scottish Index of Multiple Deprivation also provides a count of the number of employment deprived people in each data zone. This is a useful measure as it can show the number of individuals who are classed as being employment deprived in data zones that are not ranked in the 20% most deprived.

Table 10: SIMD 2020 – Percentage of the working age population who are classed as employment deprived

LCPP/Ward	Working Age Population	Count of people who were classed as employment deprived	% working age population who are classed as employment deprived
Coldside	12,426	2,059	16.6%
East End	9,742	1,764	18.1%
Lochee	12,319	2,023	16.4%
Maryfield	14,026	1,789	12.8%
North East	10,282	1,275	12.4%
Strathmartine	12,201	1,511	12.4%
The Ferry	11,770	580	4.9%
West End	16,004	1,255	7.8%
<b>Total Dundee</b>	<b>98,770</b>	<b>12,256</b>	<b>12.4%</b>

Source: Scottish Government, SIMD 2020

The SIMD 2020 found that 12.4% of the working age population in Dundee City are classed as employment deprived. The proportions across the eight LCPP/Wards in Dundee varies from 18.1% in East End to 4.9% in The Ferry.

### **SIMD 2020 – Income Domain**

The income domain in the Scottish Index of Multiple Deprivation examines adults and children in Income Support or Income-based Employment Support Allowance households, adults in Guarantee Pension Credit households, adults and children in Job Seekers Allowance households and adults and children in Tax Credit Families.

Table 11- SIMD 2020 – Percentage of the population living in data zones ranked in the 20% most deprived in the income domain

LCPP/Ward	Total Population	Population living in data zones ranked in the 20% most deprived in the income domain	% of the population living in data zones ranked in the 20% most deprived in the income domain
Coldside	18,366	11,192	60.9%
East End	15,870	12,111	76.3%
Lochee	19,439	9,599	49.4%
Maryfield	18,610	6,789	36.5%
North East	15,987	5,459	34.1%
Strathmartine	19,684	7,380	37.5%
The Ferry	20,174	588	2.9%
West End	20,580	1,253	6.1%
<b>Total Dundee</b>	<b>148,710</b>	<b>54,371</b>	<b>36.6%</b>

Source: Scottish Government, SIMD 2020

The SIMD reported that 36.6% of the population in Dundee City live in a data zone ranked in the 20% most deprived in the income domain. The percentage of the population living in these data zones varies significantly in the different LCPP/Ward in Dundee City from 76.3% in East End to 2.9% in The Ferry.

For each data zone the Scottish Index of Multiple Deprivation (SIMD) produces a count of individuals classed as income deprived. The number of income deprived people is an attempt to identify individuals who are income deprived despite not living in a data zone that is ranked within the 20% most deprived

Table 12: Percentage of the population who are classed as income deprived

LCPP/Ward	Total Population	Count of the population who are classed as Income Deprived	% of the population who are classified as Income Deprived
Coldside	18,366	3,904	21.3%
East End	15,870	4,018	25.3%
Lochee	19,439	3,940	20.3%
Maryfield	18,610	3,064	16.5%
North East	15,987	2,925	18.3%
Strathmartine	19,684	3,390	17.2%
The Ferry	20,174	1,072	5.3%
West End	20,580	2,078	10.1%
<b>Total Dundee</b>	<b>148,710</b>	<b>24,391</b>	<b>16.4%</b>

Source: Scottish Government, SIMD 2020

The SIMD 2020 reported that 16.4% of the population in Dundee City are classed as income deprived. East End (25.3%), Coldside (21.3%) and Lochee (20.3%) were the LCPP/Wards which have the greatest proportion of their populations who are classed as income deprived. In contrast West End (10.1%) and The Ferry (5.3%) are the LCPP/Wards which have the lowest proportions of their respective populations who are classed as income deprived.

## **SIMD 2020 – Housing Domain**

Table 13: Percentage of the population living in data zones ranked in the 20% most deprived in the housing domain

<b>LCP/Ward</b>	<b>Total Population</b>	<b>Population living in data zones ranked in the 20% most deprived in the housing domain</b>	<b>% of the population living in data zones ranked in the 20% most deprived in the housing domain</b>
Coldside	18,366	11,523	62.7%
East End	15,870	7,532	47.5%
Lochee	19,439	9,164	47.1%
Maryfield	18,610	13,487	72.5%
North East	15,987	6,900	43.2%
Strathmartine	19,684	4,800	24.4%
The Ferry	20,174	982	4.9%
West End	20,580	13,204	64.2%
<b>Total Dundee</b>	<b>148,710</b>	<b>67,592</b>	<b>45.5%</b>

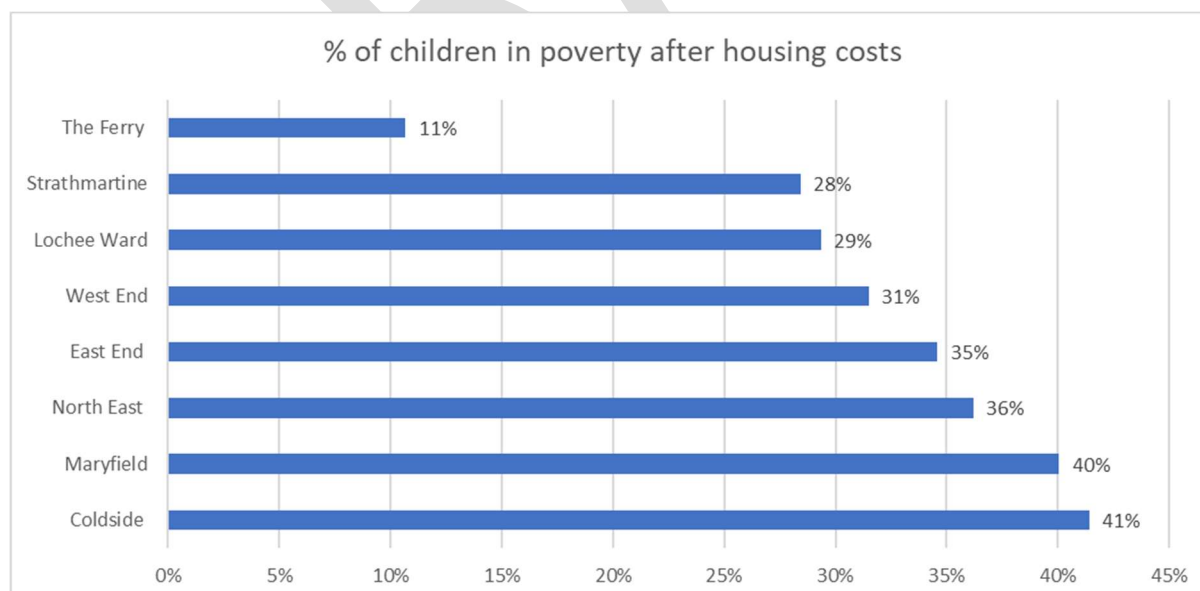
Source: Scottish Government, SIMD 2020

In Dundee City 45.5% of the population live in a data zone which is ranked in the 20% most deprived in the housing domain. Maryfield (72.5%), West End (64.2%) and Coldside (62.7%) are the LCP/Wards which have the greatest percentage of their respective populations living in data zones ranked in the 20% most deprived in the housing domain. The Ferry (4.9%) is the LCP/Ward which has the lowest proportion of the population living in data zones ranked in the 20% most deprived in the housing domain.

## **Percentage of Children in Poverty After Housing Costs**

In Dundee City overall 31% of children in 2017/18 are in poverty according to the Child Poverty Action. Child poverty exists in all areas across the City, over a quarter of children are in poverty (after housing costs) in seven of the eight electoral wards in Dundee City as shown below.

Figure 7: Percentage of children in poverty after housing costs



Source: End Child Poverty – Poverty in Your Area 2019  
<http://www.endchildpoverty.org.uk/poverty-in-your-area-2019/>

**DRAFT**

## Homelessness and People in Temporary Accommodation

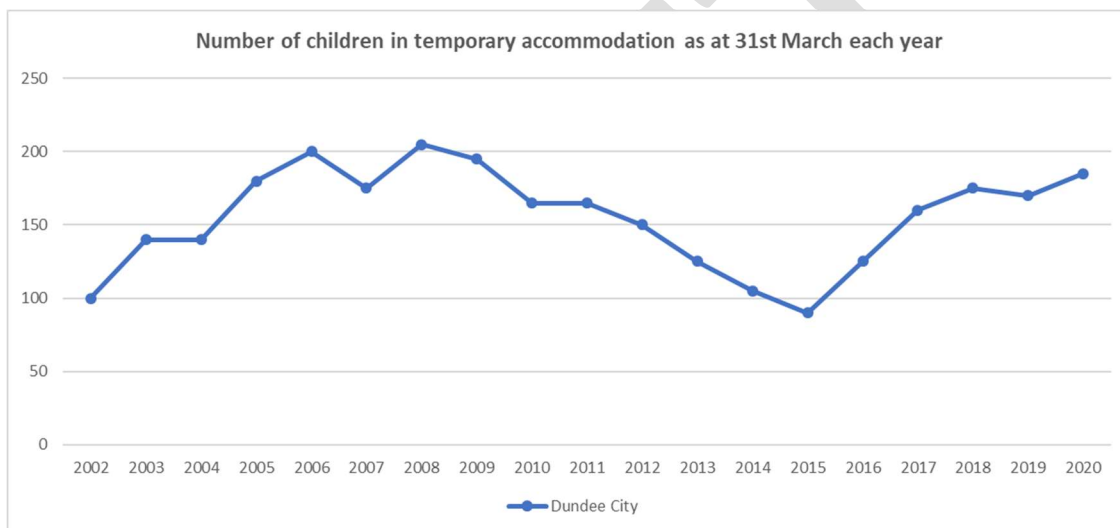
The Scottish Government published the Homelessness in Scotland 2019 to 2020 report in August 2020. This publication reported that during the period 2019/2020, there were 1,022 applications in Dundee City that were assessed as homeless or threatened with homelessness. There were 1,537 people associated with these applications 1,127 adults and 410 children.

At a Scottish level in the period 2019/2020 there were 31,333 applications assessed as homeless or threatened with homelessness. There were 51,365 people associated with these applications 35,654 adults and 15,711 children.

As at 31<sup>st</sup> March 2020, there were 245 households in temporary accommodation in Dundee City. The number of children living in temporary accommodation as at 31<sup>st</sup> March 2020 was 185.

The number of children living in temporary accommodation in Dundee City increased by 8.8% from 170 as at 31<sup>st</sup> March 2019 to 185 as at 31<sup>st</sup> March 2020. The chart below shows the number of children living in temporary accommodation in Dundee City at 31<sup>st</sup> March from 2002 to 2020.

Figure 8: Number of children in temporary accommodation as at 31<sup>st</sup> March 2002-2020 (Dundee City)



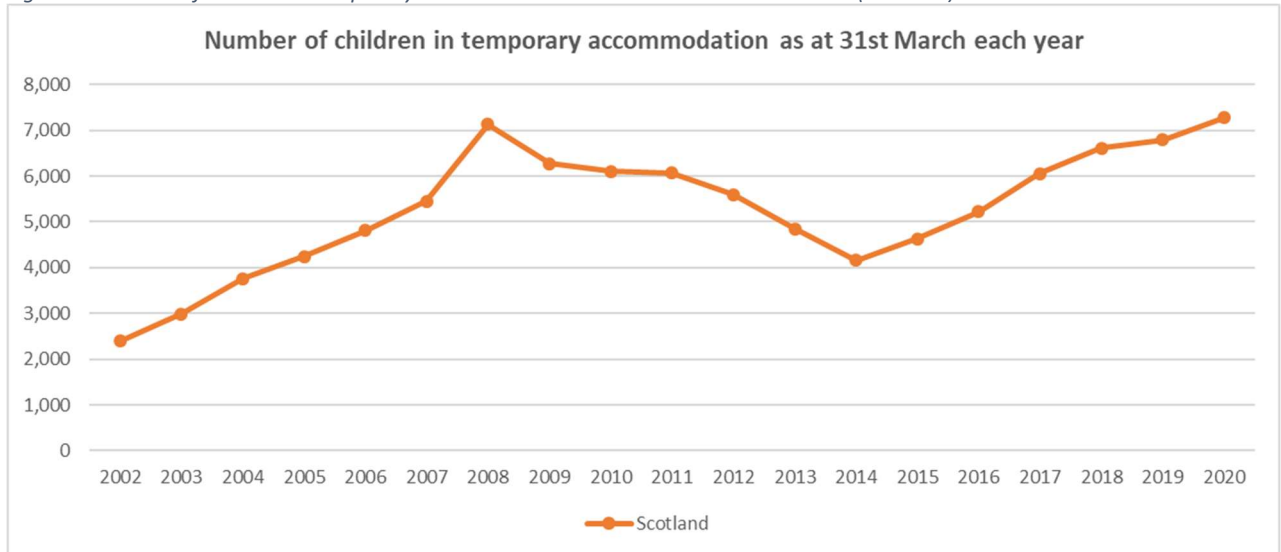
Source: Scottish Government, Homelessness in Scotland 2019-2020, Table 31: Number of children in temporary accommodation as at 31<sup>st</sup> March by Local Authority

\*Figures have been rounded to the nearest 5 for disclosure control

At a Scottish level as at 31<sup>st</sup> March 2020, there were 11,665 households in temporary accommodation. The number of children living in temporary accommodation as at 31<sup>st</sup> March 2020 was 7,280.

The number of children living in temporary accommodation in Scotland increased by 7.1% from 6,795 as at 31<sup>st</sup> March 2019 to 7,280 as at 31<sup>st</sup> March 2020. The chart below shows the number of children living in temporary accommodation in Scotland at 31<sup>st</sup> March 2020 to 2020.

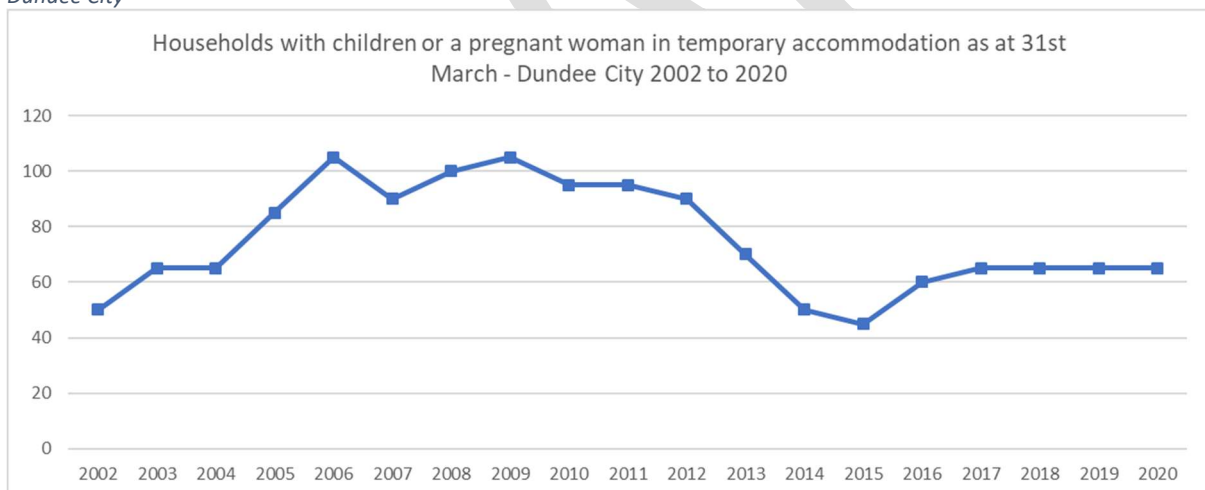
Figure 9: Number of children in temporary accommodation as at 31<sup>st</sup> March 2002-2020 (Scotland)



Source: Scottish Government, Homelessness in Scotland 2019-2020, Table 31: Number of children in temporary accommodation as at 31<sup>st</sup> March by Local Authority  
 \*Figures have been rounded to the nearest 5 for disclosure control

The Scottish Government, Homelessness in Scotland 2019-2020 publication reported that there were 65 households in temporary accommodation in Dundee City with a child or pregnant woman as 31<sup>st</sup> March 2020. This figure is consistent with the figures reported in 2017, 2018 and 2019.

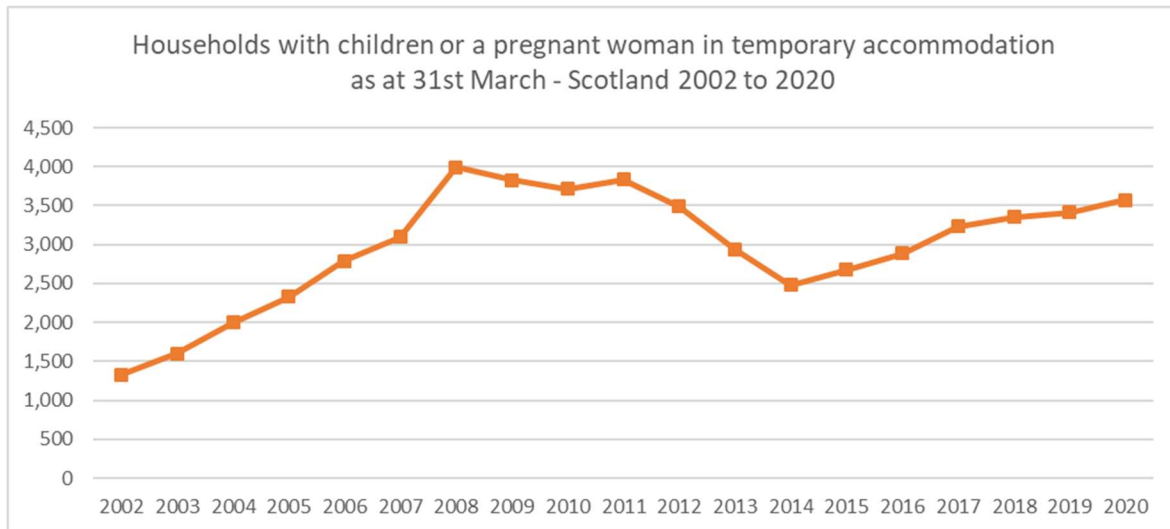
Figure 10: Households with children or a pregnant woman in temporary accommodation as at 31<sup>st</sup> March 2002 to 2020 – Dundee City



Source: Scottish Government, Homelessness in Scotland 2019-2020, Table 30, Households with children or a pregnant woman in temporary accommodation as at 31<sup>st</sup> March 2002 to 2020  
 \*Figures have been rounded to the nearest 5 for disclosure purposes

At a Scottish level there were 3,570 households with a child or pregnant woman as at 31<sup>st</sup> March 2020. This figure has increased by 4.5% from 3,415 at March 2019 to 3,570 at March 2020.

Figure 11: Households with children or a pregnant woman in temporary accommodation as at 31<sup>st</sup> March 2002 to 2020 Scotland



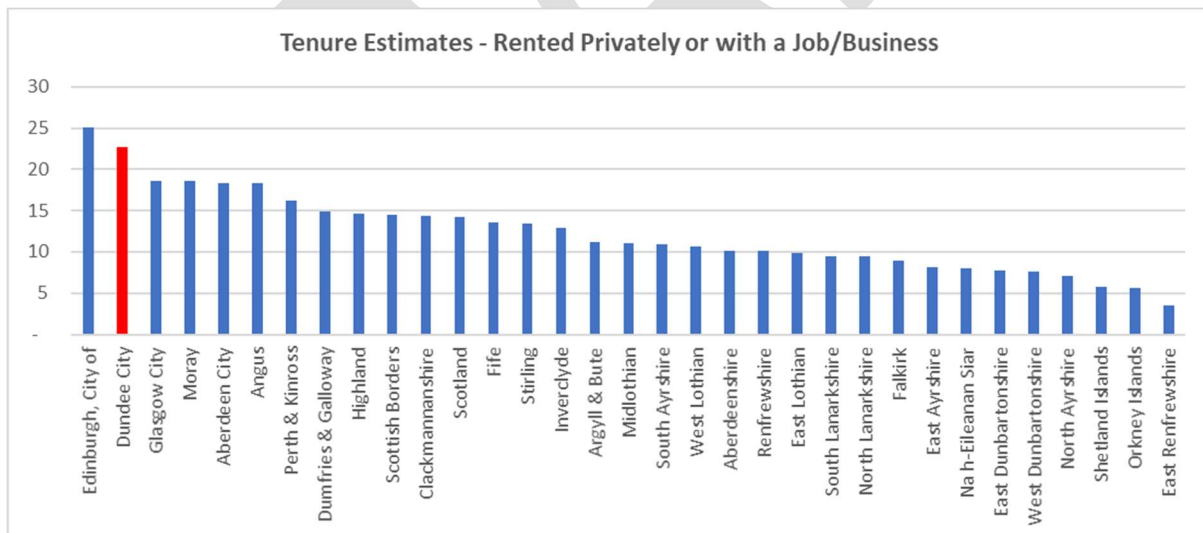
Source: Scottish Government, Homelessness in Scotland 2019-2020, Table 30, Households with children or a pregnant woman in temporary accommodation as at 31<sup>st</sup> March 2002 to 2020

\*Figures have been rounded to the nearest 5 for disclosure purposes

### Private Rental Statistics

The private rented sector accounts for 23% of the housing stock in Dundee City, the second highest proportion of private rented properties behind Edinburgh (25%) when compared to all local authorities in Scotland.

Figure 12: Tenure Estimates – Rented Privately or with a Job/Business



Source: Scottish Government – Housing Statistics 2019 publication – Housing Stock by tenure to March 2018

The Scottish Government Private Rent Statistics 2010-2019 publication reported that the median rent in the private sector for a 2 bedroom property in the Dundee and Angus broad rental market area was £575 per month. At a Scottish level the median private rent for a 2 bedroom property was £600. (rent prices 2019 year to end of September)

Average (mean) rents between 2018 and 2019 in the Dundee and Angus broad rental market area have increased for all property sizes with increases seen for 1 bedroom properties (2.9%), 2 bedroom (3.6%), 3 bedroom (6.6%), 4 bedroom (8.5%) properties, and 1 bedroom shared properties (3.5%), which compares to CPI inflation of 1.7% across this time period.

## **Vulnerable Children**

The Scottish Government publish Children's Social Work Statistics on an annual basis with the most recent statistics being for the period 2018-19.

The publication reported that on the 31<sup>st</sup> July 2019, there were 463 children looked after in Dundee City. This represents 1.7% of the 0-17 years population. At a Scottish level on the 31<sup>st</sup> July 2019, there were 14,262 children looked after in Scotland which equates to 1.4% of the 0-17 years population.

Table 14: Children looked after by type of accommodation – Dundee City 31<sup>st</sup> July 2019

<b>Location</b>	<b>Number of Looked After Children</b>
<b>In the Community</b>	
At home with parents	87
With friends/relatives	97
With foster carers provided by Local Authority	139
With foster carers purchased by Local Authority	73
In other community*	13
<b>In residential accommodation</b>	
In local authority home/ Voluntary Home	32
In other residential care**	22

Source: Scottish Government, Children's Social Work Statistics 2018/19 – Additional Tables – Table 3.3

Please note table excludes children who are on a planned series of short term placements

\*In other community includes with prospective adopters

\*\*Other residential care includes crisis care, secure accommodation and residential school

The Scottish Government Children's Social Work 2018-19 publication reported that in Dundee City there were 91 children on the Child Protection Register at 31<sup>st</sup> July 2019. Overall in Scotland there were 2,599 children on the Child Protection Register at 31<sup>st</sup> July 2019.

## **Primary 1 – Body Mass Index**

Public Health Scotland Scotland publish statistics on the body mass index of primary 1 pupils on an annual basis. In 2018/19 it reported in Dundee City that 73.8% of pupils were of a healthy weight, 13.5% were at risk of being overweight and 11.3% were at risk of obesity.

At a Scottish level, 77% of pupils were of a healthy weight, 12% were at risk of being overweight and 10% were at risk of obesity. (Source: Public Health Scotland – Body Mass Index Statistics 2018/19)

## **School Pupil Numbers**

The Scottish Government 2018, Pupil Census which was published in July 2019 reported that there were

- 33 Primary Schools in Dundee City with 10,697 pupils attending these schools
- 8 Secondary Schools in Dundee City with 7,364 pupils attending these schools
- 2 Special Schools in Dundee City with 225 pupils attending these schools

## **Free School Meal Data**

The Scottish Government Healthy Living Survey 2020 reported that 28.2% of primary 4-7 pupils on the school roll in Dundee City were registered for free school meals. This was higher than the Scottish proportion which stood at 19.9%.

At secondary school level, 24.1% of those on the school roll in Dundee City were registered for free school meals. This was higher than the Scottish proportion which stood at 15.6%.



## School Attainment

Table 15: Percentage of leavers attaining literacy and numeracy at SCQF Level 4 and 5

	SCQF 4+		SCQF 5+	
	Dundee City	Virtual Comparator	Dundee City	Virtual Comparator
2019	85.8%	87.3%	58.7%	61.9%

Source: Insight

In Dundee City in 2019, 85.8% of school leavers attained literacy and numeracy at SCQF Level 4. This was lower than the virtual comparator which stood at 57.3%. In 2019 58.7% of school leavers attained literacy and numeracy at SCQF Level 5, this was lower than the virtual comparator which stood at 61.9%.

Table 16: Percentage of school leavers achieving literacy and numeracy at SCQF 5+ by deprivation

	Dundee City Council	Virtual Comparator
SIMD Quintile 2-5	69%	71%
SIMD Quintile 1	43%	48%
Gap (PP)	26.8	23.5

Source: Insight

### Narrative to be added

Table 17: Positive Destinations 2018/19

	Dundee city Council		LAC	
	Dundee city Council	Virtual Comparator	National	DCC
2018/19	94.3%	94.4%	82.4%	87.5%

Source: Insights

### Narrative to be added

## Employment and Unemployment (January – December 2019)

### Economically Active

Table 18: Economically Active – January to December 2019

Economically Active January – December 2019	Dundee City (Numbers)	Dundee City (Percentage)	Scotland (Percentage)
Economically Active*	71,000	72.8	77.5
In Employment*	66,900	68.6	74.8
Employees*	57,700	59.7	65.8
Self Employed*	8,500	8.1	8.8
Unemployment (model based)**	3,800	5.4	3.5

Source: NOMIS, ONS Annual Population Survey

\*Numbers are for those aged 16 and over, %'s are for those aged 16-64

\*\*Numbers and %'s are for those aged 16 and over. % is a proportion of economically active

In the period January 2019 to December 2020, the ONS Annual Population Survey estimated that 71,000 or 72.8% of those aged 16-64 years in Dundee City were Economically Active. This is 4.7% lower than the Scottish proportion which stood at 72.8%.

## Economically Inactive

Table 19: Economically Inactive – January to December 2019

Economically Inactive January-December 2019	Dundee City (Numbers)	Dundee City (Percentage)	Scotland (Percentage)
Total	25,900	27.2	22.5
Student	9,300	35.7	25.5
Looking After Family/Home	3,500	13.5	19.1
Temporary Sick	#	#	2.1
Long-Term Sick	7,800	30.2	28.1
Discouraged	!	!	0.4
Retired	2,500	9.6	14.3
Other	2,500	9.8	10.4
Wants a Job	6,600	25.3	20.4
Does not want a job	19,400	74.7	79.6

Source: NOMIS, ONS Annual Population Survey

# Sample size too small to be reliable estimate

! Estimate is not available since sample size is disclosive

Numbers are for those aged 16-64

% is proportion of those economically inactive, except total which is a proportion of those aged 16-64 years

In the period January to December 2019, the ONS Annual Population Survey estimated that 25,900 or 27.2% of those aged 16-64 years in Dundee City were Economically Inactive. This is 4.7% higher than the Scottish proportion which stood at 22.5%.

## Earnings

Table 20: Median Gross Weekly Pay (Resident Based 2019)

Median Gross Weekly Pay	Dundee City (Pounds)	Scotland (Pounds)
Full Time Workers	543.3	577.7
Male Full-Time Workers	575.3	623.7
Female Full-Time Workers	502.6	527.3

Source: NOMIS, ONS Annual Survey of Hours and Earnings – Resident Analysis

Median earnings in pounds for employees living in the area

The ONS Annual Survey of Hours and Earnings reported that in 2019 gross median weekly earnings for full time workers in Dundee City stood at £543.3, this was lower than the Scottish median gross weekly pay which stood at £577.7.

Table 21: Median Gross Annual Pay – FTE (Resident Based 2019)

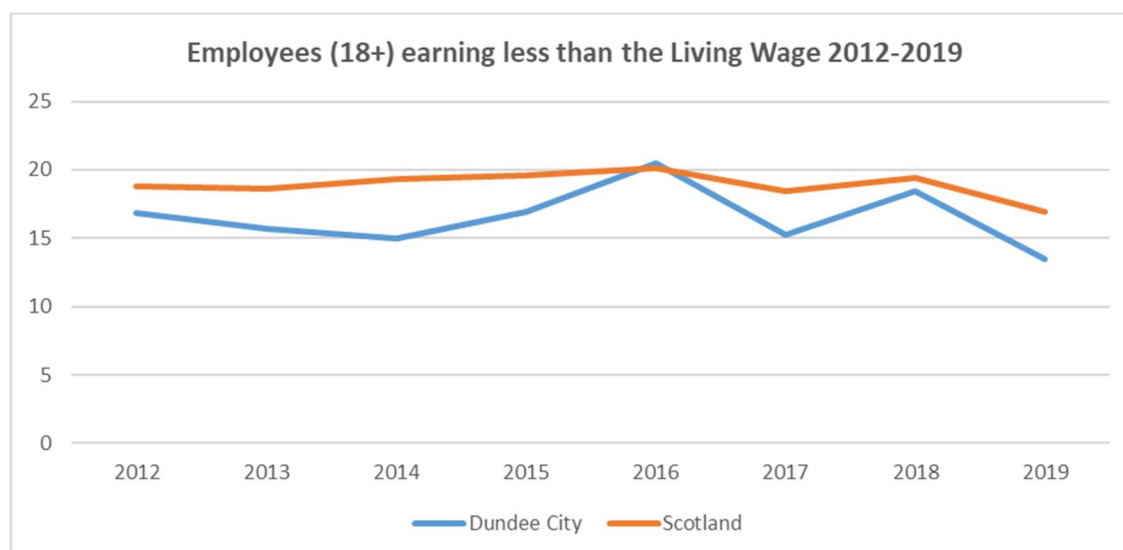
Location	Median Gross Annual Pay FTE
Dundee City	£27,356
Glasgow City	£29,377
Aberdeen City	£30,386
City of Edinburgh	£32,182
Scotland	£30,000

Source: NOMIS, ONS Annual Survey of Hours and Earnings – Resident Analysis

The median gross annual earnings for full time employees was £27,356 in Dundee City in 2019. This is lower when compared to the other cities displayed in the above table. At a Scottish level the median gross annual earnings in 2019 for full time employees was £30,000.

## **Employees (18+) earning less than the living wage 2012-2019**

Figure 13: Employees (18+) earning less than the living wage 2012-2019



Source: Scottish Government, ONS Annual Survey of Hours and Earnings Tables – OCEAES – Economic Statistics Labour Market Statistics

1. Covers employees aged 18+ on the PAYE system on adult rates and whose pay was not affected by absence
2. Levels calculated using low pay calibration weights in line with ONS guidance
3. Estimates for 2012 are for April 2012 therefore Living Wage rate of £7.20 has been applied; 2013 estimate based on a rate of £7.45; 2014 estimate based on a rate of £7.65; 2015 estimate based on a rate of £7.85, 2016 estimate based on a rate of £8.25, 2017 estimate based on a rate of £8.45, 2018 estimate based on a rate of £8.75 and 2019 estimate based on a rate of £9.00. The independently-calculated Living Wage rates are announced simultaneously in the first week of November of each year during Living Wage Week.
4. Hourly earnings exclude any overtime payments
5. Local Authorities are "workplace", based so these include all those that work in the Council area regardless of where they live

In 2019, the ONS Annual Survey of Hours and Earnings reported that 13.5% of employees aged 18+ in Dundee City were earning less than the living wage. This was lower than the overall Scottish percentage which stood at 16.9%

## **Workless Households**

Table 22: Workless Households – January – December 2019

<b>Workless Households January – December 2019</b>	<b>Dundee City</b>	<b>Scotland</b>
Number of Workless Households	13,500	319,000
Percentage of households that are workless	25.3	17.7
Number of children in workless households	#	97,500
Percentage of children in households that are workless	#	11.1

Source: NOMIS ONS annual population survey - households by combined economic activity status

# Sample size too small for reliable estimate (see definitions)

Notes: Only includes those households that have at least one person aged 16 to 64.

Children refers to all children aged under 16.

In the period January to December 2019, there were 13,500 workless households in Dundee City, this represents a figure of 25.3%. This is higher than the Scottish percentage which stands at 17.7%.

**DRAFT**

## **DWP and HMRC – Children in Low Income Families – Great Britain – 2014/15 to 2018/19 (Experimental Statistics)**

The tables below are taken from DWP and HRMC – Children in Low Income Families – Great Britain 2014/15 to 2018/19 (Experimental Statistics) which were published in June 2020. The publication contains annual official experimental statistics on the number of children living in Relative and Absolute low income families by local area across Great Britain. These statistics replace earlier Official Statistics previously published by DWP (Children in out-of-work benefit households) and HMRC (Personal tax credits: Children in low-income families local measure). The new statistics provide a more coherent picture of children living in low income families by local area.

The publication states that the figures are calibrated to the Households Below Average Income (HBAI) survey 3-year regional averages of children living in low income households but provide more granular local area information not available in HBAI.

The tables show numbers and percentages for children aged under 16 living in Relative and Absolute low income families by Local Authority and Ward. Percentages are calculated by dividing the number of children aged 0-15 living in low income families in a geographical area by the population aged 0-15 in that geographical area. Populations have been taken from mid-year population estimates; the mid-2018 population estimates were the latest available at the time of release. Rates are shown for children aged under 16 due to difficulty identifying 16-19 year olds defined as child dependents in the population estimates.

### **Definitions used in the publication:**

Children are defined as dependent individuals aged under 16. Child age is derived as the duration from Date of Birth to 31 March in each year.

A family is defined as a single adult; or a married or cohabitating couple; or a Civil Partnership; and any dependent children.

Relative low income is defined as a family in low income Before Housing Costs (BHC) in the reference year. A family must have claimed one or more of Universal Credit, Tax Credits or Housing Benefit at any point in the year to be classed as low income in these statistics.

Absolute low income is defined as a family in low income Before Housing Costs (BHC) in the reference year in comparison with incomes in 2010/11. A family must have claimed one or more of Universal Credit, Tax Credits or Housing Benefit at any point in the year to be classed as low income in these statistics.

*Table 23 : The number and percentage of children (Aged Under 16) – Living in Relative Low Income Families – Dundee City*

<b>The Number and Percentage of Children (Aged under 16) – Living in Relative Low Income Families – Dundee City</b>					
	<b>2014/15</b>	<b>2015/16</b>	<b>2016/17</b>	<b>2017/18</b>	<b>2018/19*</b>
Number	4,037	4,103	4,866	5,255	5,134
Percentage	17%	17%	20%	22%	21%

Source: DWP and HMRC – Children in Low Income Families – Great Britain – 2014/15 to 2018/19 (Experimental Statistics). Source shown as DWP Stat Xplore and NOMIS

Statistical disclosure control has been applied to this table to avoid the release of confidential data. Totals may not sum due to the disclosure control applied.

\*2018/19 figures are provisional and may be revised in subsequent releases

Please note

1. Figures are for Great Britain and show children aged under 16 in Relative low income families Before Housing Costs (BHC).
2. Percentages are calculated by dividing the number of children aged under 16 living in low income families in a Local Authority by the population aged under 16 in that Local Authority
3. Populations have been taken from the ONS mid-year population estimates. The mid-2018 population estimates were the latest available at the time of release.
4. Percentages have been rounded to 1 decimal places
5. Local Authorities reflect the LA boundaries as of April 2019

The above table shows that in 2018/19, 21% of children aged under 16 years were living in relative low income families. This has decreased from 22% reported in 2017/18.

**DRAFT**

Table 24: The number and percentage of children (Aged Under 16) – Living in Relative Low Income Families – Dundee City Ward Breakdown

<b>The Number and Percentage of Children (Aged under 16) – Living in Relative Low Income Families – Dundee City</b>					
	<b>2014/15</b>	<b>2015/16</b>	<b>2016/17</b>	<b>2017/18</b>	<b>2018/19*</b>
Coldside	534 (23%)	623 (27%)	680 (30%)	742 (32%)	744 (32%)
East End	676 (21%)	672 (20%)	790 (24%)	854 (26%)	848 (27%)
Lochee	614 (18%)	683 (20%)	842 (24%)	905 (25%)	899 (24%)
Maryfield	503 (23%)	488 (22%)	574 (26%)	626 (29%)	556 (26%)
North East	575 (17%)	568 (17%)	718 (21%)	714 (20%)	724 (21%)
Strathmartine	663 (17%)	620 (16%)	782 (20%)	867 (22%)	780 (20%)
The Ferry	221 (7%)	215 (7%)	212 (7%)	231 (8%)	243 (8%)
West End	249 (13%)	241 (12%)	265 (13%)	314 (15%)	341 (16%)

Source: DWP and HMRC – Children in Low Income Families – Great Britain – 2014/15 to 2018/19 (Experimental Statistics).

Source shown as DWP Stat Xplore and NOMIS

Statistical disclosure control has been applied to this table to avoid the release of confidential data. Totals may not sum due to the disclosure control applied.

\*2018/19 figures are provisional and may be revised in subsequent releases

Please note

1. Figures are for Great Britain and show children aged under 16 in Relative low income families Before Housing Costs (BHC).
2. Percentages are calculated by dividing the number of children aged under 16 living in low income families in a Local Authority by the population aged under 16 in that Local Authority
3. Populations have been taken from the ONS mid-year population estimates. The mid-2018 population estimates were the latest available at the time of release.
4. Percentages have been rounded to 1 decimal places
5. Wards reflect 2018 electoral wards

Provisional figures for 2018/19 show that the percentage of children (aged under 16) living in relative low income families in Dundee City varies across the different LCPP/ Wards. The highest percentages were experienced in Coldside (32%), East End (27%) and Maryfield (26%). The lowest proportions occurred in West End (16%) and The Ferry (8%).

Table 25: Number and Percentage of children (Aged under 16) – Living in Absolute Low Income Families – Dundee City -Ward Breakdown

<b>The Number and Percentage of Children (Aged under 16) – Living in Absolute Low Income Families – Dundee City</b>					
	<b>2014/15</b>	<b>2015/16</b>	<b>2016/17</b>	<b>2017/18</b>	<b>2018/19*</b>
Number	4,056	3,771	3,964	4,310	4,095
Percentage	17%	16%	17%	18%	17%

Source: DWP and HMRC – Children in Low Income Families – Great Britain – 2014/15 to 2018/19 (Experimental Statistics).

Source shown as DWP Stat Xplore and NOMIS

Statistical disclosure control has been applied to this table to avoid the release of confidential data. Totals may not sum due to the disclosure control applied.

\*2018/19 figures are provisional and may be revised in subsequent releases

Please note

1. Figures are for Great Britain and show children aged under 16 in Absolute low income families Before Housing Costs (BHC).
2. Percentages are calculated by dividing the number of children aged under 16 living in low income families in a Local Authority by the population aged under 16 in that Local Authority
3. Populations have been taken from the ONS mid-year population estimates. The mid-2018 population estimates were the latest available at the time of release.
4. Percentages have been rounded to 1 decimal places
5. Local Authorities reflect the LA boundaries as of April 2019

Provisional figures for 2018/19 show that 17% of children aged under 16 years in Dundee City were living in absolute low income families. This has decreased from 18% reported in 2017/18.

Table 26: Number and percentage of children (aged under 16) – Living in Absolute Low Income Families – Dundee City

<b>The Number and Percentage of Children (Aged under 16) – Living in Absolute Low Income Families – Dundee City</b>					
	<b>2014/15</b>	<b>2015/16</b>	<b>2016/17</b>	<b>2017/18</b>	<b>2018/19*</b>
Coldside	536 (24%)	568 (25%)	601 (26%)	639 (28%)	606 (26%)
East End	689 (21%)	624 (19%)	641 (20%)	671 (21%)	658 (21%)
Lochee	617 (18%)	626 (18%)	662 (19%)	741 (20%)	705 (19%)
Maryfield	506 (23%)	447 (20%)	481 (22%)	537 (25%)	462 (22%)
North East	574 (17%)	515 (15%)	581 (17%)	569 (16%)	569 (16%)
Strathmartine	666 (17%)	559 (14%)	609 (16%)	706 (18%)	605 (15%)
The Ferry	221 (7%)	202 (7%)	190 (6%)	181 (6%)	225 (7%)
West End	249 (13%)	227 (11%)	205 (10%)	273 (13%)	271 (13%)

Source: DWP and HMRC – Children in Low Income Families – Great Britain – 2014/15 to 2018/19 (Experimental Statistics).

Source shown as DWP Stat Xplore and NOMIS

Statistical disclosure control has been applied to this table to avoid the release of confidential data. Totals may not sum due to the disclosure control applied.

\*2018/19 figures are provisional and may be revised in subsequent releases

Please note

1. Figures are for Great Britain and show children aged under 16 in absolute low income families Before Housing Costs (BHC).
2. Percentages are calculated by dividing the number of children aged under 16 living in low income families in a Local Authority by the population aged under 16 in that Local Authority
3. Populations have been taken from the ONS mid-year population estimates. The mid-2018 population estimates were the latest available at the time of release.
4. Percentages have been rounded to 1 decimal places
5. Wards reflect 2018 electoral wards

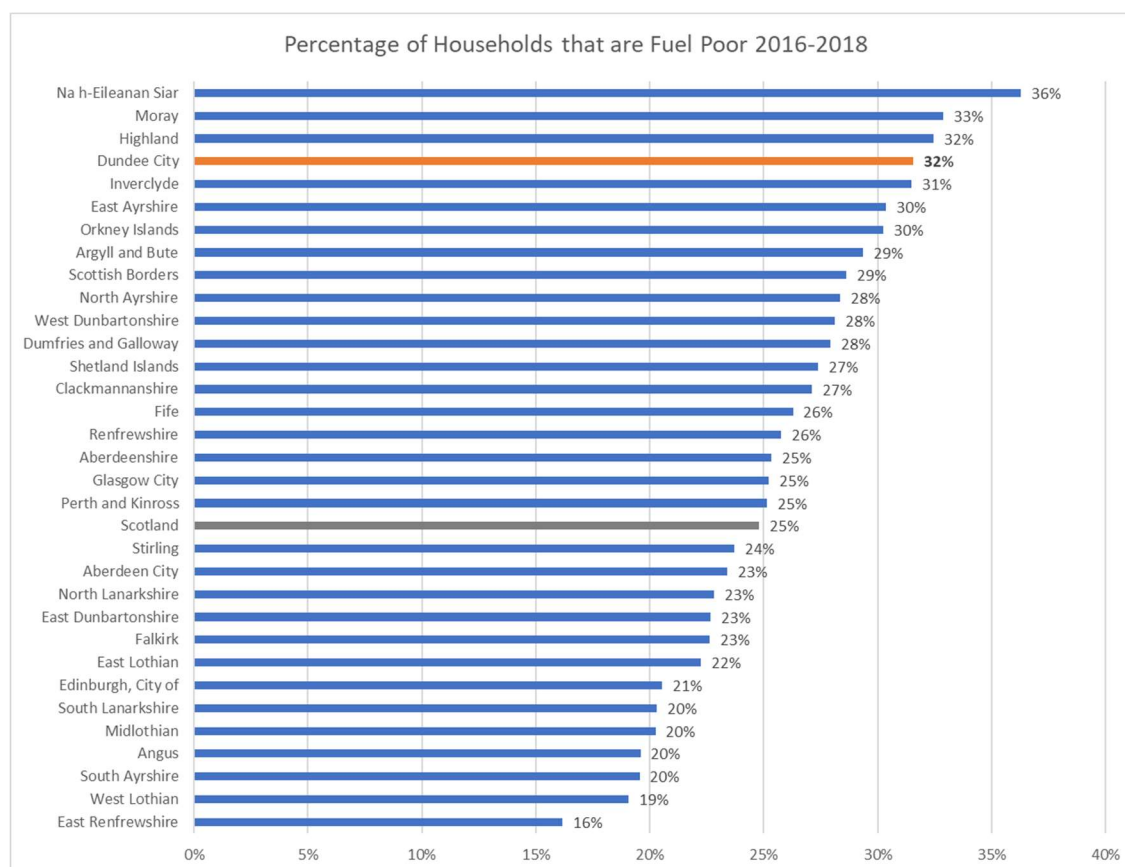
Provisional figures for 2018/19 show the percentage of children under 16 living in absolute low income families varies across the LCPP/Wards in Dundee City. In Coldside 26% of children under 16 live in absolute low income families whereas 7% of children under 16 live in absolute low income families in The Ferry.

### **Percentage of Households that are Fuel Poor**

The Scottish Government, Scottish House Condition Survey report stated that a new definition has been created for fuel poverty. A household is in fuel poverty if, in order to maintain a satisfactory heating regime, total fuel costs necessary for the home are more than 10% of the household's adjusted net income (after housing costs), and if after deducting fuel costs, benefits received for a care need or disability and childcare costs, the household's remaining adjusted net income is insufficient to maintain an acceptable standard of living. The remaining adjusted net income must be at least 90% of the UK Minimum Income Standard to be considered an acceptable standard of living, with an additional amount added for households in remote rural, remote small town and island areas.

The Scottish Government, Scottish House Condition Survey estimated that in Dundee City in the period 2016-2018 32% of all households were fuel poor. This was greater than the Scottish estimate which was 25%. Fuel poverty rates varied across the local authorities in Scotland from 16% in East Renfrewshire to 36% in Na h-Eileanan Siar. Dundee City had the joint third highest percentage of households in fuel poverty when compared to the other local authorities in Scotland.

Figure 14: Percentage of households that are Fuel Poor 2016-2018 – Local Authorities and Scotland



Source: Scottish Government - Scottish House Condition Survey 2016-2018 Local Authority Tables  
Please note there is a caveat on this data set which states that the above are a best estimate of fuel poverty under the new definition of fuel poverty and cannot be compared to previous local authority analysis figures.

As well as providing overall fuel poverty estimates, the Scottish Government, Scottish Households Condition Survey 2016-2018 also provides estimates of households that are fuel poor by household attributes. The report estimated that 28% of family households in Dundee City were fuel poor during the period 2016-18. This was higher than the Scottish estimate of 19%.

### **Dundee City Council Annual Citizens Survey – Financial Management Questions – Lone Parents**

The most recent Dundee City Council Annual Citizens Survey was conducted in 2019. During the survey period 1,300 citizens in Dundee City were interviewed to establish their views on general and specific aspects of life in Dundee. A section of the survey focussed on money matters.

In the 2019 Annual Citizens Survey there were 75 responses where the household was shown as a single parent household with at least one child (0-15 years). The following tables look at the responses to the financial questions by lone parents.

Table 27: Household Income from Welfare Benefits (Lone Parent Responses)

What proportion of your household income comes from Welfare Benefits ?	
Response	Percentage
None	18.7%
Some	21.3%
All	60.0%
Don't know	0.0%
<b>Total</b>	<b>100.0%</b>

Source: Dundee City Council – Annual Citizens Survey 2019 – Question 43

The majority of lone parents who participated in the 2019 Annual Citizens Survey (81.3%) stated that all or some of their household income comes from welfare benefits. This is much higher when compared to the responses from all survey respondents where 30% stated that all or some of their income comes from Welfare Benefits.

Table 28: Contents Insurance (Lone Parent Responses)

<b>Do you have insurance for the contents of your house such as furniture, electrical goods etc?</b>	
<b>Response</b>	<b>Percentage</b>
Yes	14.7%
No	82.7%
Don't Know	1.3%
Prefer not to say	1.3%
<b>Total</b>	<b>100.0%</b>

Source: Dundee City Council – Annual Citizens Survey 2019 – Question 45

Around 15% of lone parents who participated in the 2019 Annual Citizens Survey stated that they did not have insurance for the contents of their house. This is much higher when compared to the responses from all survey respondents where 58% of respondents stated that they had contents insurance for their house.

Table 29: Specific Financial Difficulties (Lone Parent Responses)

<b>Are you currently experiencing, or within the last year have you had any difficulties with the following?</b>		
<b>Types of Difficulties</b>	<b>Yes</b>	<b>No</b>
Mortgage or rent payments	10.7%	89.3%
Changes to benefits	5.3%	94.7%
Council Tax Payments	22.7%	77.3%
Loan or Credit Card Payments	21.3%	78.7%
Cost of Food	41.3%	58.7%
Cost of domestic energy bills	60.0%	40.0%
Vehicle fuel prices	1.3%	98.7%
None of the above	32.0%	68.0%
Prefer not to say	1.3%	98.7%

Source: Dundee City Council – Annual Citizens Survey 2019 – Question 46

The majority of lone parents who participated in the 2019 Annual Citizens Survey stated that they were not currently experiencing or had in the last year experienced most of the financial difficulties shown in the table above. However, 60% of lone parents stated that they were currently experiencing or had experienced difficulties with the cost of domestic energy bills in the last year. This was higher compared to the responses from all survey respondents where 17% stated that they had faced this difficulty.

The cost of food also received a high response with 41.3% of lone parents stating that they were currently experiencing difficulties or had experienced difficulties in the last year. This was higher than the responses from all survey respondents where 14% stated that they had faced this difficulty.

Table 30:- Financial Situation (Lone Parent Responses)

<b>Taking everything together, which of these phrases on this card best describes how you and your household are managing financially these days?</b>	
<b>Response</b>	<b>Percentage</b>
Managing very well	1.3%
Managing quite Well	13.3%
Get by alright	54.7%
Don't manage very well	16.0%
Have some deep financial difficulties	13.3%
Are in deep financial trouble	1.3%
Refused	0.0%
Don't know	0.0%



<b>Total</b>	<b>100.0%</b>
--------------	---------------

Source: Dundee City Council – Annual Citizens Survey 2019 – Question 47

When asked about their financial situation 14.6% of respondents who participated in the 2019 annual citizens survey stated that they were managing very well or quite well. A large proportion of respondents (54.7%) stated they were getting by alright. Sixteen percent stated that they don't manage very well. Around 13% of respondents stated that they were having some deep financial difficulties and 1.3% of respondents stated that they were in deep financial trouble.

DRAFT

**DRAFT**